

COUNTY OF SAN MATEO

25

Inter-Departmental Correspondence

Date: January 24, 2001

Board Meeting Date: February 6, 2001

TO: Honorable Board of Supervisors

FROM: Neil R. Cullen, Director of Public Works

SUBJECT: Proposed Limited Parking on Industrial Way – Belmont/San Carlos Area

RECOMMENDATION

Adopt an ordinance that restricts the parking of commercial and recreational vehicles on Industrial Way, County Road No 64, between the hours of 6:00 a.m. and 6:00 p.m., Saturday, Sundays and holidays excepted

Previous Board Action

Adopted a similar ordinance to restrict the parking of commercial and recreational vehicles on Harbor Boulevard near Industrial Way.

Key Facts

The proposed limited parking has been requested by the Harbor Industrial Association in order to have the same parking restrictions that are in place on Harbor Boulevard, and on Industrial Way within the corporate limits of the City of San Carlos immediately to the south of Harbor Boulevard.

Discussion

The proposed limited parking has been requested by the Harbor Industrial Association as the businesses in the Harbor Industrial area have complained that large commercial and recreational vehicles are being stored on the street making it difficult at best to enter and exit the businesses' driveways, and taking parking places that are needed for the businesses' customers.

The Ordinance uses the definition in the California Vehicle Code to define Commercial Motor Vehicle which in general means any vehicle that requires a Class A or Class B license, or a class C license with an endorsement (double trailer, passenger transportation vehicle for 10 or more passengers, a tank vehicle or a vehicle carrying hazardous material that is required to display placards) in order to drive said vehicle. The Ordinance also references Section 18010 of the Health and Safety Code to define a Recreational Vehicle

Honorable Board of Supervisors

Subject: Proposed Limited Parking on Industrial Way – Belmont/San Carlos Area

January 24, 2001

Board Meeting Date: February 6, 2001

Page 2


which in general means any motor home, travel trailer, camper or camping trailer with or without motive power, designed for human habitation for recreation, emergency or other occupancy which contains less than 320 square feet of internal living room area

Automobiles, sports utility vehicles, small vans and pickup trucks will continue to be allowed to park on the street and the commercial and recreation vehicles will still be allowed to park overnight and on weekends and holidays on Harbor Boulevard.

Fiscal Impact

The estimated cost to install signs indicating the limited parking is estimated at \$900. The cost will be born by the Road Fund. There is no impact to the General Fund.

A form of Ordinance has been approved by County Counsel.



Neil R. Cullen
Director of Public Works

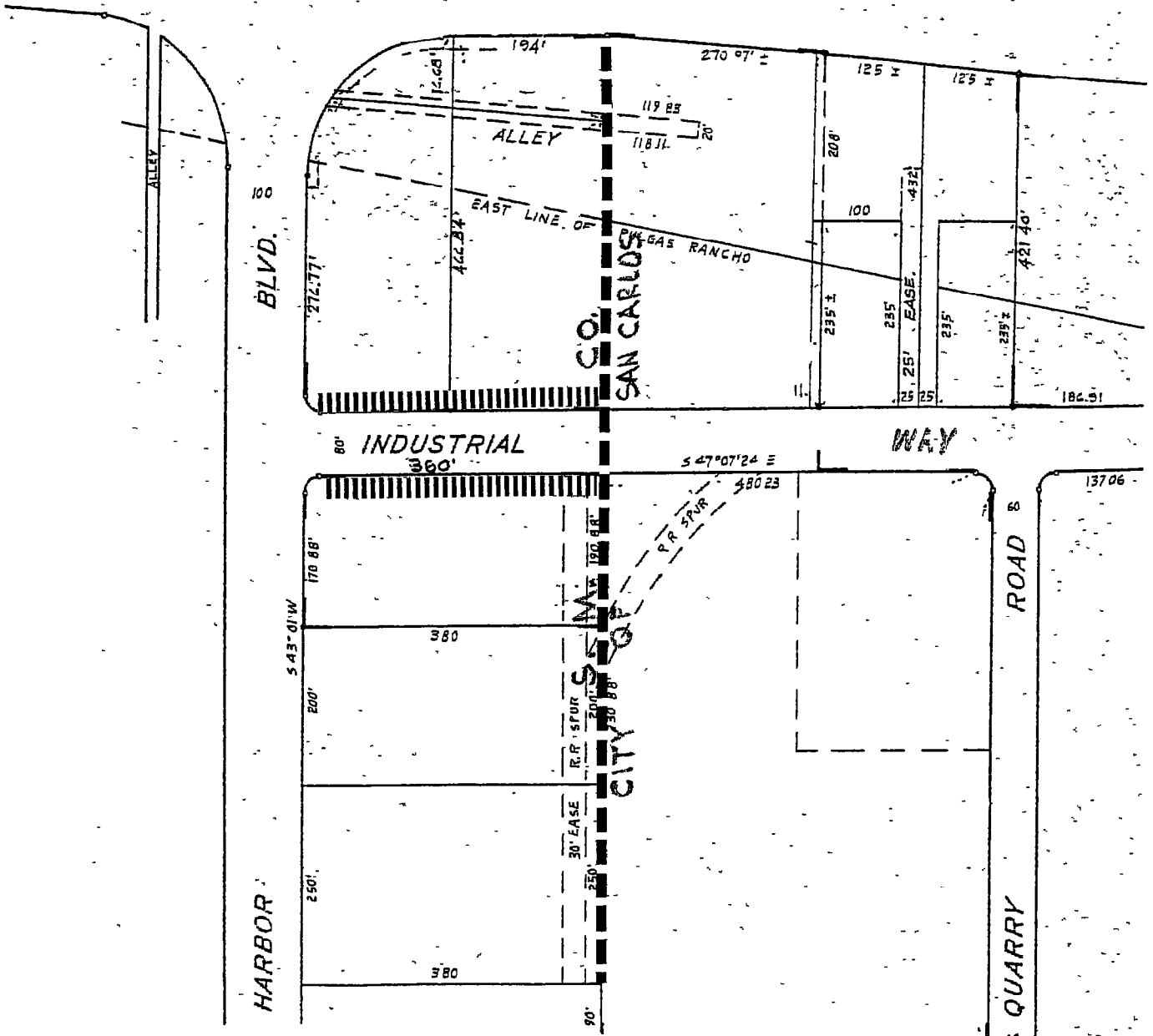
NRC:BCL.RWC.sdd

F:\USERS\ADMIN\CONSTRUC\TRAFFIC\BOARDSUP\2001\Limited Pa k ng Industrial Way 24 Jan 2001.doc

Attachment. Location Map

cc: Harbor Industrial Association
Milt Mares, County Counsel

BAYSHORE



PROPOSED LIMITED PARKING

DESIGNED BY:	<p>PROPOSED LIMITED PARKING</p> <p>INDUSTRIAL WAY</p>	SCALE: 1" = 100'
CHECKED BY:		DATE: FEB 01
DRAWN BY: RWC		FILE NO.
NEIL R. CULLEN, DIRECTOR OF PUBLIC WORKS SAN MATEO COUNTY		

Ordinance No. _____

Board of Supervisors, County of San Mateo, State of California

* * * * *

**An Ordinance Adding Section 7.28.270 to the
San Mateo County Ordinance Code
Establishing a Limited Parking Zone on Industrial Way
in the Belmont/San Carlos Area for Commercial and Recreational Vehicles**

The Board of Supervisors of the County of San Mateo, State of California, **ORDAINS** as follows:

SECTION 1. Section 7.28 of the San Mateo County Ordinance Code is hereby amended by adding Section 7.28.270 thereto to read as follows:

Section 7.28.270

Commercial and Recreational Vehicles may not park on Industrial Way, County Road No. 64., between the hours of 6:00 a.m. and 6:00 p.m., Saturday, Sundays and holidays excepted

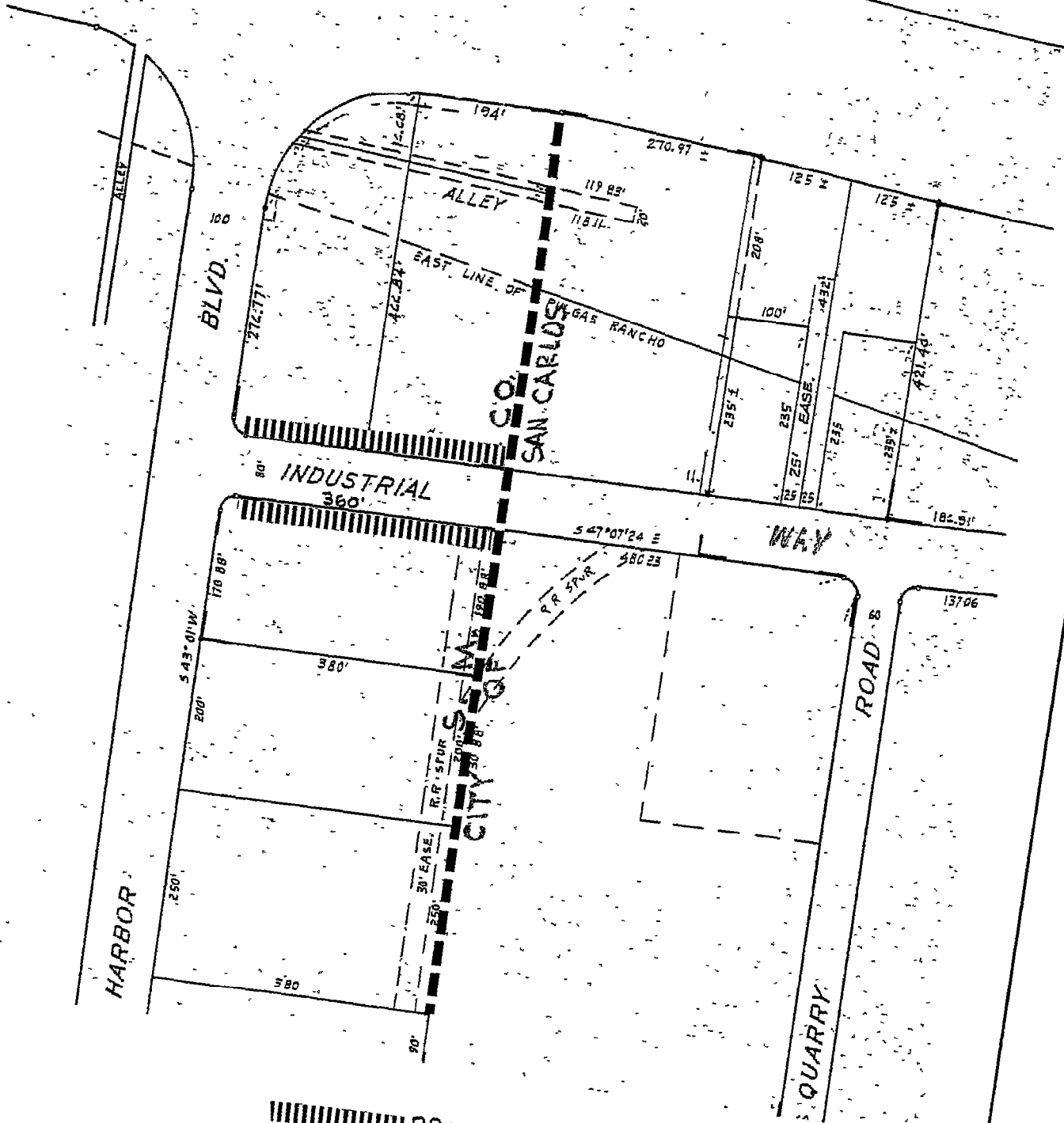
A Commercial Vehicle for the purpose of this Section shall be any Commercial Motor Vehicle as defined by Section 15210 of the California Vehicle Code as may be amended which, in general, means any vehicle that requires a Class A or Class B license, or a Class C license with an endorsement (double trailer, passenger transportation vehicle for 10 or more passengers, a tank vehicle or a vehicle carrying hazardous material required to display placards) in order to drive said vehicle

A Recreational Vehicle for the purpose of this section shall mean any Recreational Vehicle as defined by Section 18010 of the California Health and Safety Code as may be amended which, in general, means any motor home, travel trailer, camper or camping trailer with or without motive power, designed for human habitation for recreation, emergency or other occupancy which contains less than 320 square feet of internal living room area

SECTION 2. This Ordinance shall be effective thirty (30) days from the passage date thereof.

* * * * *

BAYSHORE



PROPOSED LIMITED PARKING

PROPOSED LIMITED PARKING
INDUSTRIAL WAY

DESIGNED BY:

CHECKED BY:

DRAWN BY: RWC

NEIL R. CULLEN, DIRECTOR OF PUBLIC WORKS
SAN MATEO COUNTY

SCALE: -

DATE: FEB 01

FILE NO.