



COUNTY OF SAN MATEO
Inter-Departmental Correspondence
COUNTY MANAGER'S OFFICE

DATE: July 19, 2001

BOARD MEETING DATE: July 24, 2001

TO: Honorable Board of Supervisors
FROM: John L. Maltbie, County Manager
SUBJECT: County Manager's Report #7

- 1) State law prohibits elder or dependent adult abuse, including allowing circumstances or conditions likely to produce bodily harm or death, suffering, as well as financial abuse.

Assembly Bill 1111 (Simitian) would create a grant program in the Office of Criminal Justice Planning (OCJP) to assist counties with the problems of financial abuse or exploitation of elders or dependent adults. Specifically, this measure would encourage counties to establish multidisciplinary personnel teams dubbed Financial Abuse Specialist Teams (FAST) including: adult protective services, public conservator or guardian, police or other law enforcement, prosecution, mental health, long-term care ombudsmen and other representatives deemed appropriate by the county.

To the extent \$5 million is provided in the State Budget, \$50,000 would be awarded to counties through competitive grants administered by OCJP.

Sponsored by the County of Santa Clara, AB 1111 is supported by Crime Victims United of California and the County Welfare Directors Association. The California Advocates for Nursing Home Reform opposes it.

Assembly Bill 1111 was approved by the Assembly 68-0; Senate Committee on Public Safety 5-0.

A resolution in support of Assembly Bill 1111 is attached for your consideration.

- 2) California voters overwhelmingly enacted Proposition 36, the Substance Abuse Treatment and Crime Prevention Act of 2000, at the November 2000 ballot. Proposition 36 requires the treatment of nonviolent drug and alcohol offenders rather than incarceration and provided \$120 million to fund treatment services. The initiative took effect on July 1 but did not include funding for drug testing.

Senate Bill 223 (Burton) would appropriate \$18 million for drug testing and clarifies that drug testing should be used as a treatment tool. Senate Bill 223 would create the Substance Abuse Testing and Treatment Accountability Program to assist counties in preserving testing integral to the treatment and recovery system of services.

Senate Bill 223 has the support of the California Attorneys for Criminal Justice, California Child, Youth and Family Coalition, California Medical Association, California Narcotics Officers Association, California Peace Officers Association, California State Association of Counties, Judicial Council of California and Urban Counties Caucus.

Senate Bill 223 was approved by the Senate 35 to 2; the Assembly Public Safety Committee 7-0 and will next be considered by the Assembly Appropriations Committee.

A resolution in support of Senate Bill 223 is attached for your consideration.

- 3) One in eight women will develop breast cancer in her lifetime. This year, an estimated 192,700 women in the United State will be diagnosed with invasive breast cancer. An estimated 40,000 will die from the disease. An estimated 3 million women in the United State are living with breast cancer - 2 million have already been diagnosed and 1 million have the disease but do not yet know it. The incidence of breast cancer in the United States has more than doubled in the past 30 years. African-American women have the highest death rate from breast cancer. Breast cancer occurs in men and is increasing at an alarming rate. This year an estimated 1,400 men in the United States will be diagnosed with breast cancer - a 40 percent increase since 1988.

The San Francisco Bay Area reports among the highest incidence of breast cancer in the world. A chart prepared by the Breast Cancer Fund on San Francisco Breast Cancer Incidence from an Ethnic Perspective is attached for your review.

Senate Bill 224 (Speier) would create the California Breast Cancer and Cervical Cancer Treatment Program for uninsured or underinsured with family incomes of up to 250 percent of the federal poverty level (FPL). This measure would require the State Department of Health Services to submit a state plan amendment to the federal Health Care Financing Administration (HCFA) adopting the optional categorically needy eligibility group described in the federal Breast and Cervical Cancer Prevention and Treatment Act of 2000.

Last year's State Budget included \$20 million for the existing Breast Cancer Control Program and the Governor's Proposed Budget recommended another \$20 million. There are approximately 2,500 patients that would be eligible for treatment under this program.

The intent of Senate Bill 224 is to expand treatment programs for low-income uninsured or underinsured women who have been diagnosed with breast or cervical cancer under state or federal screening programs. The California Breast and Gynecological Cancer Treatment Task Force is the sponsor. Other support includes AARP, American Cancer Society, Association of Bay Area Health Officials, California Medical Association, Gray Panthers, California Women's Law Center, Breast Cancer Fund, California Association of Public Hospitals and Health Systems and California Commission on the Status of Women.

The San Mateo County Commission on the Status of Women recommends the Board support this important measure to expand treatment of breast and cervical cancer to uninsured and underinsured women.

Senate Bill 224 was approved by the Senate 28 to 3; Assembly Health Committee 16-0; and will next be considered by the Assembly Appropriations Committee.

Attached for your consideration is a resolution in support of Senate Bill 224 (Speier).

- 4) The Golden Gate National Recreation Area (GGNRA) was created by an act of Congress in 1972 to "preserve for public use and enjoyment certain areas of Marin and San Francisco counties. . . possessing outstanding natural, historic, scenic and recreational values." In 1980 federal legislation was enacted to expand the boundary of the GGNRA to include significant lands in San Mateo County including the 1,100-acre Sweeney Ridge property.

Today, the GGNR consists of 74,000 acres of land and water, approximately 28 miles of coastline and specific sites including Alcatraz, Marin Headlands, Fort Funston, Fort Mason, Muir Woods, Fort Point National Historic Site and the San Francisco Presidio. The diverse urban and rural lands are regarded as nationally significant cultural and natural resources and are a management challenge to the National Park Service. A map of the GGNRA lands is attached.

House Resolution 1953 (Lantos) and Senate 941 (Feinstein and Boxer) would expand and adjust the boundary of the Golden Gate National Recreational Area (GGNRA) to include an area of about 5,000 acres of undeveloped land known as the Devil's Slide area and the Rancho Corral de Tierra located on the coast in San Mateo County. According to a study completed by the Peninsula Open Space Trust (POST) in consultation with the National Park Service staff, these lands would provide a logical southern entry to the GGNRA and protect an unusually large piece of significant scenic and ecological resource firmly linked to existing parkland. "Enhanced by a situation of willing sellers and a prospect of partnerships in the acquisition process, this report concludes that the properties evaluated would be feasible and desirable park additions."

A map of the proposed lands to be included in the expansion is attached, which includes:

- The Devil's Slide lands would include 525.44 acres, with five separate owners: Schanbacher Trust Property (305.22 acres) Shamrock Ranch (174.37 acres) Pavca Property (20.10 acres) Devil's Slide Promontory (9.61 acres) Gray Whale Cove Promontory and former Ocean Shore Railroad Property (16.14 acres) ; and
- The Montara Mountain /Corral de Tierra totaling 4,291.12 acres with three owners: The McNee Ranch (823.69 acres) and Cowell-Torello (3,467.43 acres).

The POST study included 8.5 acres within the Cowell-Torello owned by the Coastsides Water District and used for water processing and delivery purposes which are not recommended for acquisition as long as current uses continue. The 359-acre Aenll Farms along San Vicente Creek were evaluated but also not included since the landowners intend to continue with complementary agricultural use.

Attached is a fact sheet on the GGNR boundary expansion prepared by the proponents as well as recent news articles on the proposal.

Last year, your Board supported House Resolution 3632 (Lantos) to expand the GGNRA boundary to include nearly 1,000 acres of public and private lands located within the City of Pacifica.

Discussion

As you know, the California Department of Transportation plans to reroute Highway 1 through a new tunnel. This would result in the potential for converting the existing right-of-way to public open space and the future development of a trail located in the federally maintained GGNRA.

Should this legislation be approved to expand the GGNRA to include the Rancho Corral de Tierra and Devil's Slide lands it would remove an additional 5,000 acres from the local property tax rolls. This loss of revenue would be repaid by the federal Payment In-Lieu of Taxes (PILT) program.

A resolution in support of H.R. 1953 (Lantos) and S. 941 (Feinstein/Boxer) is attached for your consideration.

5) State Budget Update

On Monday, July 16, 2001, the State Assembly approved a \$101 billion state spending plan by adding \$60 million in tax breaks and sweeteners for agribusiness organizations. This tactic allowed the Democratic controlled Assembly to lure four Republican members representing rural districts to accomplish the 2/3-majority vote required. The tax package includes an end to sales tax on farm equipment, \$1.2 million for a little league field in Clovis, \$5 million for Kern County and \$6 million for the Lodi and Galt police departments

Once the State Senate successfully acts on the proposal, which includes the restoration of the State's sales taxes to five percent, it will be subject to the Governor's blue pencil. It is reported that Governor Davis will reduce expenditures by as much as \$400 million in order to increase the reserve from \$2.2 to \$2.6 billion.

The State Capitol Update is attached to provide greater details on the 2001-02 spending plan.

RESOLUTION NO. _____
BOARD OF SUPERVISORS, COUNTY OF SAN MATEO, STATE OF CALIFORNIA

RESOLUTION IN SUPPORT OF ASSEMBLY BILL 1111 (SIMITIAN)
ELDER AND ADULT ABUSE

RESOLVED, by the Board of Supervisors of the County of San Mateo, State of California,
that

WHEREAS, current state law prohibits elder or dependent adult abuse, including allowing
circumstances or conditions likely to produce bodily harm or death, inflicts suffering, as well as
financial abuse;

WHEREAS, Assembly Bill 1111 (Simitian) would create a grant program in the Office of
Criminal Justice Planning (OCJP) to assist counties with the problems of financial abuse or
exploitation of elders or dependent adults by encourage counties to establish multidisciplinary
personnel teams dubbed Financial Abuse Specialist Teams (FAST);

WHEREAS, these teams would include representation from adult protective services,
public conservator or guardian, police or other law enforcement, prosecution, mental health, long-
term care ombudsmen and other representatives deemed appropriate by the county;

WHEREAS, to the extent \$5 million is provided in the State Budget, \$50,000 would be
awarded to counties through competitive grants administered by OCJP;

NOW, THEREFORE BE IT RESOLVED that the San Mateo County Board of Supervisors
support the enactment of Assembly Bill 1111 (Simitian) to encourage counties for multidisciplinary
teams to respond to cases of elder and dependent abuse.

RESOLUTION NO. _____
BOARD OF SUPERVISORS, COUNTY OF SAN MATEO, STATE OF CALIFORNIA

RESOLUTION IN SUPPORT OF SENATE BILL 223 (BURTON)
FUNDS FOR DRUG TESTING

RESOLVED, by the Board of Supervisors of the County of San Mateo, State of California,
that

WHEREAS, the San Mateo County Board of Supervisors unanimously supported
Proposition 36 and California voters overwhelmingly enacted that measure, the Substance Abuse
Treatment and Crime Prevention Act of 2000, at the November 2000 ballot;

WHEREAS, Proposition 36 requires the treatment of nonviolent drug and alcohol offenders
rather than incarceration and provided \$120 million to fund treatment services, but expressly
excluded funding for drug testing;

WHEREAS, Senate Bill 223 (Burton) would appropriate \$18 million for drug testing and
clarifies that drug testing should be used as a treatment tool. Senate Bill 223 would create the
Substance Abuse Testing and Treatment Accountability Program to assist counties in preserving
testing integral to the treatment and recovery system of services;

WHEREAS, Senate Bill 223 has the support of the California Attorneys for Criminal
Justice, California Child, Youth and Family Coalition, California Medical Association, California
Narcotics Officers Association, California Peace Officers Association, California State Association
of Counties, Judicial Council of California and Urban Counties Caucus.

NOW, THEREFORE BE IT RESOLVED that the San Mateo County Board of Supervisors
support the enactment of Senate Bill 223 (Burton) to provide necessary funds for drug testing
which is integral to successful treatment and recovery services.

RESOLUTION NO. _____
BOARD OF SUPERVISORS, COUNTY OF SAN MATEO, STATE OF CALIFORNIA

**RESOLUTION IN SUPPORT OF SENATE BILL 224 (SPEIER) BREAST AND CERVICAL
CANCER TREATMENT**

RESOLVED, by the Board of Supervisors of the County of San Mateo, State of California,
that

WHEREAS, one in eight women will develop breast cancer in her lifetime; this year, an estimated 192,700 women in the United State will be diagnosed with invasive breast cancer, an estimate 40,000 will die from the disease; an estimated 3 million women in the United State are living with breast cancer - 2 million have already been diagnosed and 1 million have the disease but do not yet know it;

WHEREAS, the incidence of breast cancer in the United States has more than doubled in the past 30 years; African-American women have the highest death rate from breast cancer and breast cancer occurs in men and is increasing at an alarming rate; this year an estimated 1,400 men in the United States will be diagnosed with breast cancer - a 40 percent increase since 1988;

WHEREAS, the San Mateo County Commission on the Status of Women recognize and share the alarm in the fact that the San Francisco Bay Area reports among the highest incidence of breast cancer in the world;

NOW, THEREFORE BE IT RESOLVED that the San Mateo County Board of Supervisors support Senate Bill 224 (Speier) to create the California Breast Cancer and Cervical Cancer Treatment Program for uninsured or underinsured with family incomes of up to 250 percent of the federal poverty level (FPL); require the State Department of Health Services to submit a state plan amendment to the federal Health Care Financing Administration (HCFA) adopting the optional categorically needy eligibility group described in the federal Breast and Cervical Cancer Prevention and Treatment Act of 2000 coupled with an additional \$20 million to fund the necessary treatment.

RESOLUTION NO. _____

BOARD OF SUPERVISORS, COUNTY OF SAN MATEO, STATE OF CALIFORNIA

RESOLUTION IN SUPPORT OF H.R. 1953 (LANTOS) AND S. 941 (FEINSTEIN/BOXER)
GOLDEN GATE NATIONAL RECREATIONAL BOUNDARY ADJUSTMENT

RESOLVED, by the Board of Supervisors of the County of San Mateo, State of California, that

WHEREAS, the Golden Gate National Recreation Area (GGNRA) was created by an act of Congress in 1972 to "preserve for public use and enjoyment certain areas of Marin and San Francisco counties. . . possessing outstanding natural, historic, scenic and recreational values;" and in 1980 federal legislation was enacted to expand the boundary of the GGNRA to include significant lands in San Mateo County including the 1,100-acre Sweeney Ridge property;

WHEREAS, the GGNRA consists of 74,000 acres of land and water, approximately 28 miles of coastline and specific sites including Alcatraz, Marin Headlands, Fort Funston, Fort Mason, Muir Woods, Fort Point National Historic Site and now the San Francisco Presidio; it offers diverse urban and rural lands that are regarded as nationally significant cultural and natural resources;

WHEREAS, House Resolution 1953 (Lantos) and Senate 941 (Feinstein and Boxer) would expand and adjust the boundary of the Golden Gate National Recreational Area (GGNRA) to include an area of about 5,000 acres of undeveloped land known as the Devil's Slide area and the Rancho Corral de Tierra located on the coast in San Mateo County;

WHEREAS, the lands proposed to be added to the GGNRA under H.R. 1953 and S. 941 according to a comprehensive study completed by the Peninsula Open Space Trust in consultation with the National Park Service staff, would provide a logical southern entry to the GGNRA and protect an unusually large piece of significant scenic and ecological resource firmly linked to existing parkland;

WHEREAS, the Devil's Slide properties will become landlocked when the tunnel is built and the old Highway One alignment at Devil's Slide is proposed to be kept as a trail for non-motorized use as it will be deemed excess;

NOW, THEREFORE BE IT RESOLVED that the San Mateo County Board of Supervisors support the enactment of H.R. 1953 and S. 941 to adjust the Golden Gate National Recreational Area to include the nearly 5,000 acres of distinctive coastal area open space in San Mateo County that would result in the protection of many threatened and endangered species, riparian habitat, offer a vital source of water for wildlife and permanent protection of lands to provide accessibility to nearly 6 million people in the San Francisco Bay Area through a model three-way partnership with federal, state and private entities.

* * * * *

California Proposition 36

THE SUBSTANCE ABUSE AND CRIME PREVENTION ACT



Press Release | Report Cards | Grading Criteria | Frequently Asked Questions

Wednesday, June 27, 2001

Prop. 36 Watchdog Issues 'Report Cards' on California Counties' Implementation Plans



Best Grades Given for Shifting from Criminal Justice to Public Health Approach in Treating Drug Addiction

Groundbreaking Initiative to Go Into Effect July 1

Contact: Shayna Samuels, (917) 544-8268, (212) 547-6916 or Dani McClain, (212) 548-0695 x 1611

(Sacramento, June 27) - Advocates of Proposition 36 - the new California initiative that allows for treatment instead of jail for non-violent drug offenders - issued 'report cards' today, grading 11 counties encompassing 75 percent of the state population on the quality of their implementation plans.

With an "A" grade, San Francisco ranked the highest, followed by San Mateo (A-), Alameda (B), Orange (B), Los Angeles (B-), Fresno (C), Riverside (C), Santa Clara (D+), San Diego (D+) and Sacramento (D). The County of San Bernardino came in last with a failing grade.

Advocates say the success of Prop. 36 - which goes into effect July 1 - depends fundamentally on how it is implemented in counties across the state.

"We want the people of California to get what they voted for," said Glenn Backes, Director of Health and Harm Reduction at The Lindsmith Center - Drug Policy Foundation, a non-profit drug policy reform organization, which issued the report cards. "We are embarking on a new drug policy to break the cycle of addiction."

Grades, based on written implementation plans submitted by each county to the State Department of Alcohol and Drug Programs, incorporated the following critical elements for success:

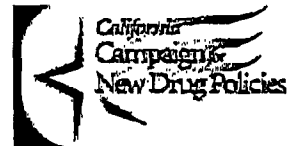
- **Money for Treatment** - Counties were graded based on the percentage of funds allocated directly to treatment-related costs. If allocated properly, funds for Prop. 36 will save taxpayers money in the long run, since incarceration is about six times more expensive than treatment.
- **Treatment Options** - Grades were given in this category based on the range of treatment programs available in each county, including: drug education, outpatient, intensive outpatient, detoxification, residential, methadone

Get the Facts

A dozen Proposition 36 fact sheets are available for download. Topics include: the Effectiveness of Drug Treatment, Drug Courts/Deferred Entry, and the California Correctional System.

Read the full text of the Bill

For background on the Prop. 36 campaign and other votes nationwide for drug policy reform, see:



maintenance, vocational training, literacy training, family counseling, and culturally-specific programs.

- **Docs or Cops?** -- This grade reflects county officials' inclusion of public health professionals in the planning and implementation processes.
- **Community Voices** - Counties were graded based on whether or not they: held community forums as part of their planning process; publicized their community forums; and/or had a balance of criminal justice, community and public health representation on their implementation task forces.
- **Extra Credit** - Extra credit was given to San Francisco, Orange, Los Angeles and Riverside Counties for issuing District Attorneys' criminal charging guidelines, defining Prop. 36 eligibility." Such guidelines will help prevent "over-charging" offenders, which would make them ineligible for treatment under Proposition 36.

"Counties will not get away with using taxpayer money to fund more of the same failed policies," said Whitney A. Taylor, Lindesmith-DPF's Proposition 36 Implementation Director. "We hope these criteria will help guide them in the right direction."

Proposition 36 - the Substance Abuse and Crime Prevention Act - was passed by 61% of California voters last November. The California State Legislative Analyst's Office (LAO) estimates that this initiative will divert approximately 37,000 low-level, non-violent drug possession offenders from incarceration into treatment at an approximate savings of \$1.5 billion over 5 years to California taxpayers.

"California is leading the nation toward drug policies based on common sense, science, public health and human rights," said Ethan Nadelmann, Executive Director of Lindesmith-DPF. "Soon other states, and eventually the federal government, will follow."

[Click here](#) to see the statewide report card and download both the statewide report card and county report cards in pdf format.

ATTENTION TELEVISION JOURNALISTS: *Drug treatment & Prop. 36 B-Roll is available for overnight delivery. Please call Shayna Samuels at (917) 544-8268 for more information.*

Prop 36 **The Substance Abuse and Crime Prevention Act** A Smarter Drug Policy for California - Over a Billion Dollars in Savings for Taxpayers

[PRESS RELEASE](#) | [REPORT CARDS](#) | [GRADING CRITERIA](#) | [FREQUENTLY ASKED QUESTIONS](#)
The Lindesmith Center - DPF • (916) 444-3751 • sacto@drugpolicy.org

County of
San Mateo
Answers Voters Call

A-

San Mateo County emphasizes the full range and cultural competency of its addiction services. This county understands and will be implementing a public health approach to treating drug addiction.

A
Money for Treatment

Prop. 36 Money Given to County to Date: \$3.1 million

County's FY 01/02 Prop. 36 Budget: \$3.1 million

San Mateo allocated 91% of its budget to treatment-related services, upholding the intent of Prop. 36.

A
Treatment Options

Not only does San Mateo offer an extensive range of culturally-competent programs, it includes mental health and psychiatric services as part of its holistic approach to treating addiction.

A
Does or Cops?

With treatment assessments taking place at locations "convenient to the client" and analysis defined as a treatment tool, San Mateo is likely to retain its clients in treatment services.

B
Community Voices

Community and consumer input was solicited through forums as part of the San Mateo planning process. However, community representation on the task force could have been more prominent.

Extra Credit - DA Accountability

No District Attorney charging guidelines were submitted when requested by The Lindsmith Center - Drug Policy Foundation.

Report Card

Prepared by **The Lindsmith Center - Drug Policy Foundation**

Phone: (916) 444-3751 • Web: www.prop36.org

(see reverse for grading criteria)

California Proposition 36

THE SUBSTANCE ABUSE AND CRIME PREVENTION ACT



Press Release | Report Cards | Grading Criteria | Frequently Asked Questions

Statewide Report Card



Download the Statewide Report Card in .pdf format



Download The Report Card for your County in PDF Format:

County	Money for Treatment	Treatment Options	Docs or Cops	Community Voices	Extra Credit	Overall Grade
San Francisco	A	A	A	A	✓	A
San Mateo	A	A	A	B		A-
Alameda	A-	B	C	B		B
Orange	A	A-	C	C	✓	B
Los Angeles	A	B	B	D	✓	B-
Fresno	C-	A-	D	C		C
Riverside	B	A-	D	F	✓	C
Santa Clara	D-	A-	D	F		D+
San Diego	B	F	D	C		D+
Sacramento	F	A	D	F		D
San Bernardino	F	C	F	F		F

- [San Francisco](#)
- [San Mateo](#)
- [Alameda](#)
- [Orange](#)
- [Los Angeles](#)
- [Fresno](#)
- [Riverside](#)
- [Santa Clara](#)
- [San Diego](#)
- [Sacramento](#)
- [San Bernardino](#)



Download the Statewide Report Card in .pdf format

Prop 36 The Substance Abuse and Crime Prevention Act

A Smarter Drug Policy for California - Over a Billion Dollars in Savings for Taxpayers

PRESS RELEASE | REPORT CARDS | GRADING CRITERIA | FREQUENTLY ASKED QUESTIONS
 The Lindesmith Center - DPE - (916) 444-3751 - sacto@drugpolicy.org

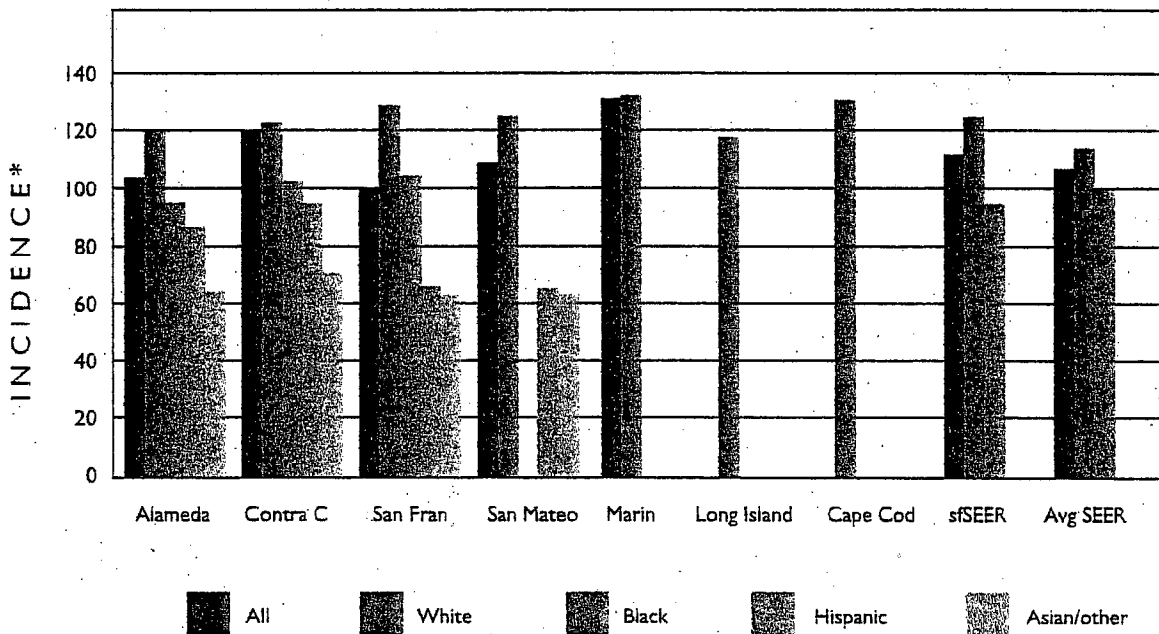
San Francisco Bay Area Breast Cancer Incidence from an Ethnic Perspective

Considering the ethnic variability of breast cancer, it is instructive to review the incidence rates in the San Francisco Bay Area by county and ethnic breakdown. Comparisons are also shown for similarly high incidence areas in other parts of the country such as Long Island and Cape Cod. Data for San Francisco-Oakland Surveillance, Epidemiology, and End Results (SEER) is compiled by the Northern California Cancer Center (NCCC).

FIGURE 3

Bay Area Breast Cancer Incidence

SEER Data 1994: Ethnic Comparisons



* rates are per 100,000 and age-adjusted to the 1970 U.S. population

©The Breast Cancer Fund

Figure 3 Abbreviations: Contra C is Contra Costa. sfSEER is an average for all five counties in the San Francisco Bay Area. AvgSEER is an average for the nine SEER regions in the U.S.

The highest incidence rates for breast cancer are in Marin County white women (135.5) followed by white women in Cape Cod (135.0). For African American women, the uppermost rate is found in San Francisco (105.7). Hispanic women have the second lowest rate although there are some unexplainable differences based on geographic location between Contra Costa County (97) and San Mateo County (68.7). Asian women have the lowest rate of all.

Rancho Corral de Tierra - San Mateo County, California Golden Gate National Recreation Area Boundary Expansion

• FACT SHEET •

PROPERTY DESCRIPTION:

- Rancho Corral, located seven miles south of San Francisco and 20 miles from Silicon Valley, is comprised of 4,262 acres
- Shares over three miles of boundary with the Golden Gate National Recreation Area
- The isolated and undisturbed condition of the land provides unique and productive habitat for a diverse array of plant and animal species
- Supports distinctive coastal scrub and coastal chaparral habitats with numerous federally listed threatened, rare and endangered plant and animal species and a number of other special species of concern, including:
 - ♦ Peregrine Falcon
 - ♦ San Bruno Elfin Butterfly
 - ♦ San Francisco Garter Snake
 - ♦ Red-legged Frog
 - ♦ Coho Salmon
 - ♦ Hickman's cinquefoil
 - ♦ Montara Manzanita
 - ♦ Montara Bush Lupine
 - ♦ San Francisco Wallflower
 - ♦ Coast Rock Cress
- Visible for over 25 miles, the property provides a scenic view-shed for California State Highway 1, part of the Cabrillo State Scenic Corridor
- Contains the headwaters for four major watersheds; these stream systems provide important riparian habitat for a number of threatened and endangered species also offers wildlife a vital source of water, increased cover, and feeding and nesting opportunities
- Historically known as "Rancho Corral de Tierra Palomares" (Corral of the Earth), it encompasses the majority of the 1839 Mexican Land Grant to Francisco Guerrero y Palomares where he built the first adobe on the San Mateo Coast at Denniston Creek

SIGNIFICANCE:

- Accessible by the more than 6 million people who live within a one hour drive
- Crucial corridor for connecting the Congressionally designated Bay Area Ridge Trail with the California Coastal Trail
- Easily accessible by public transportation from State Highway 1
- The dramatic ascent of Montara Mountain from the sea, 2,000 feet in just over 1 mile, is a spectacular sight not duplicated anywhere else in the Park and in few other places on the California coast

- Would establish a clear and logical southern entrance to the park that is currently lacking, providing an ideal location to introduce visitors to its unique configuration and its status as national parkland, with the large, single, geographically dramatic figure Montara Mt.
- The National Park Service Boundary Study finds that this addition is practical to administer
- As part of the GGNRA, the property would provide national park programs and experiences to unprecedented numbers of local, national and international visitors
- Presents a unique opportunity for permanent protection through a three-way partnership involving Federal, State and Private entities

FINANCING:

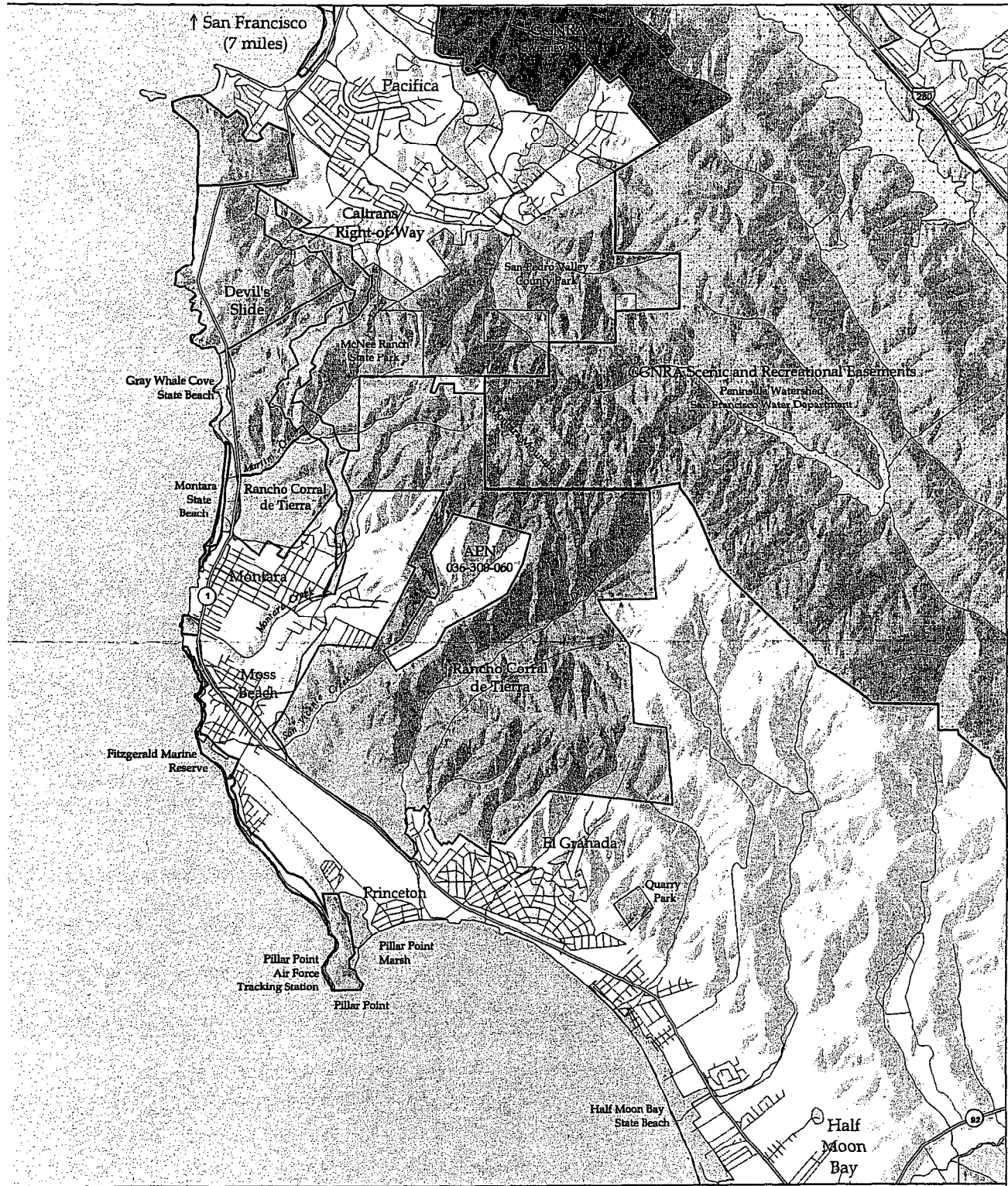
- POST entered into an option to purchase for \$29,750,000
- POST intends to leverage significant Federal funds through the use of matching grants from State and Private funding sources

THREAT:

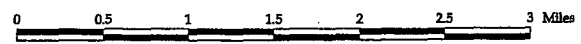
- Accessibility, beauty and zoning make it extremely vulnerable to development
- Current zoning regulations would degrade the property's principal character-defining and incomparable qualities
- Opportunity lost to give permanent protection to threatened and endangered species

Proposed Boundary Revisions Golden Gate National Recreation Area (GGNRA)

Rancho Corral de Tierra, Devil's Slide and Caltrans Additions



- Current GGNRA Authorized Boundary
- GGNRA Scenic and Recreation Easement
- Other Public or Private Protected Lands
- GGNRA Lands Managed by NPS
- Proposed Addition to GGNRA Boundary

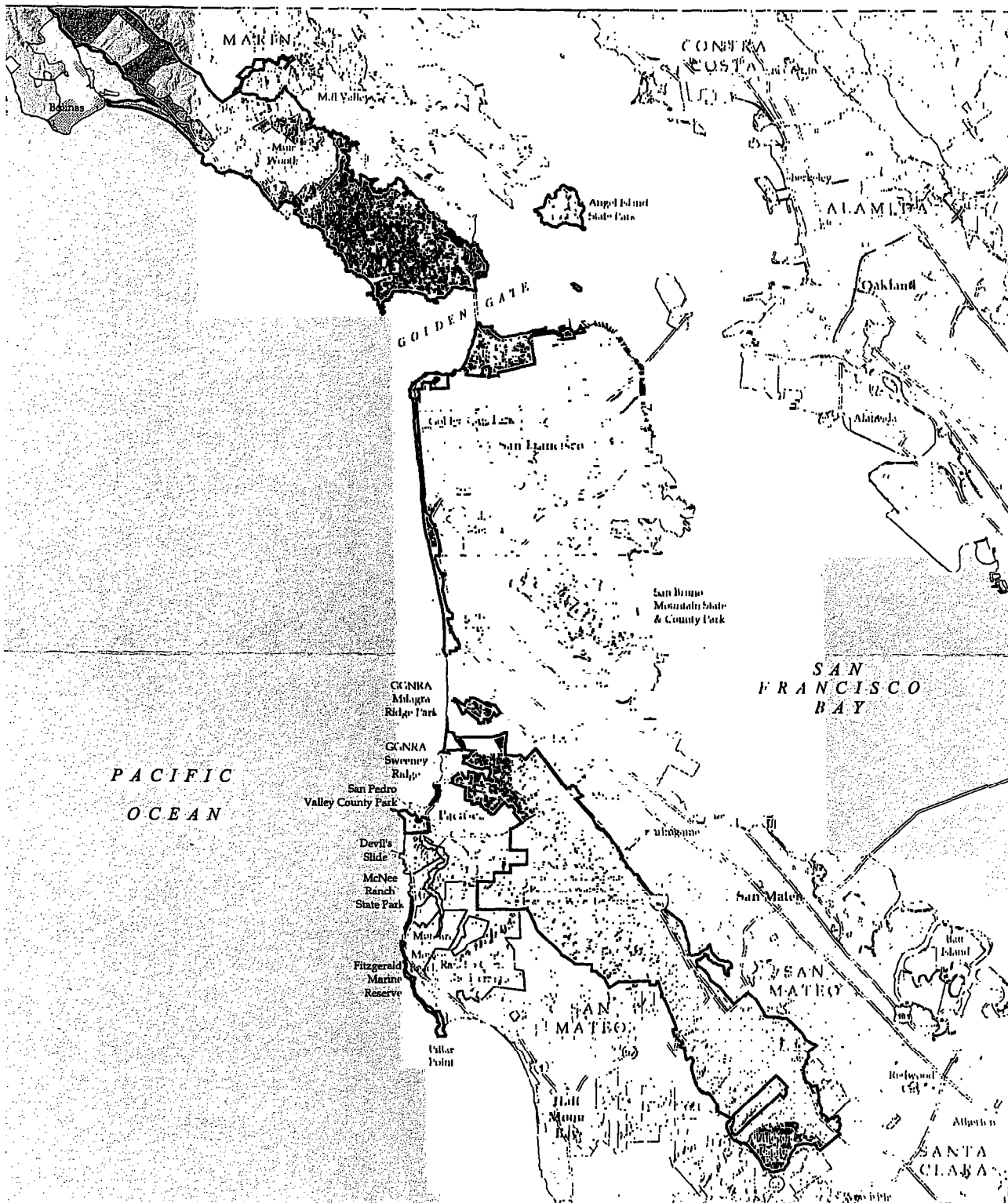


Sources: POST BAOSC, USGS
GreenInfo Network, MROSD, GGNRA

Proposed Boundary Revisions

San Francisco Bay Area

Golden Gate National Recreation Area (GGNRA)



Rancho Corral de Tierra, Devil's Slide and Caltrans Additions

- Current GGNRA Authorized Boundary
- GGNRA Scenic and Recreation Easement
- Other Public or Private Protected Lands
- GGNRA Lands Managed by NPS
- Proposed Addition to GGNRA Boundary
- Urban Areas
- County Lines

2 sq miles = 1280 acres
640 ac.



Sources: POST BACSC, USGS GreenInfo Network, MARCOS, GGNRA

San Jose Mercury News

LOCAL WEDNESDAY, MAY 9, 2001 SAN JOSE MERCURY NEWS

Open-space trust buys property

LAND PURCHASED IN PRESERVATION EFFORT

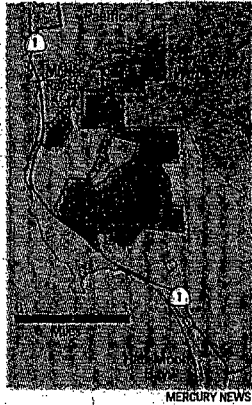
By Putsata Reang
Mercury News

A major swath of undeveloped land on the San Mateo County coast purchased Tuesday for conservation purposes is expected to significantly expand the boundaries of the widely used Golden Gate National Recreation Area.

Peninsula Open Space Trust, based in Menlo Park, bought 4,262 acres between San Francisco and Half Moon Bay for nearly \$30 million. The property, known as Rancho Corral de Tierra, is the second-largest parcel purchased by the trust.

"It has all the components of a massive-size piece of property that you would want to protect," said Walter Moore, vice president of the trust. The land includes farms, watersheds, wildlife, public trails and two of the four main peaks of Montara Mountain.

The purchase is part of a



\$200 million initiative to buy and preserve pieces of the region's dwindling open space on the coast. To kick-start the campaign, the trust last month received two unprecedented grants of \$50 million each from the David and Lucile Packard Foundation and the Gordon and Betty Moore Foundation.

The land trust hopes to

See **LAND**, Page 5B

LAND | Trust to preserve acres

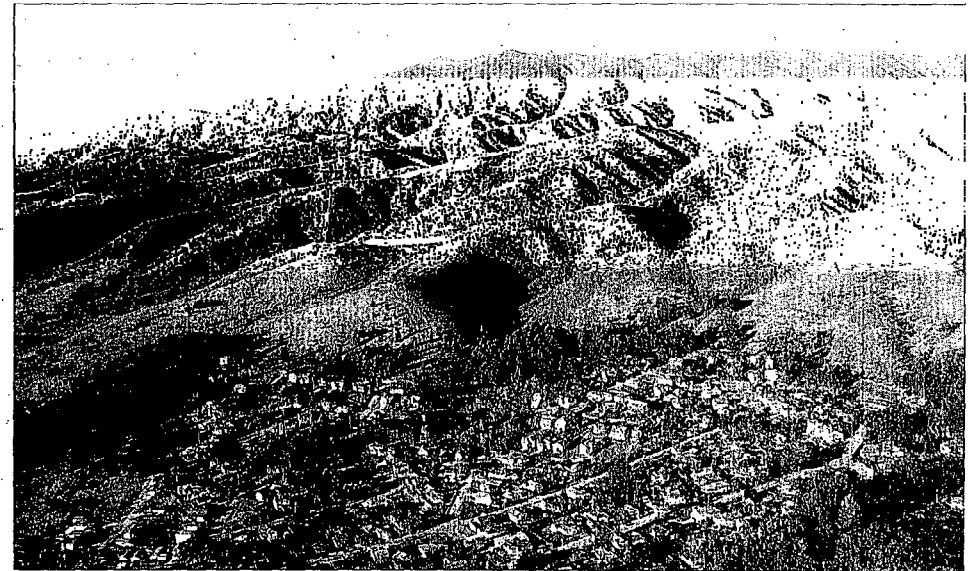
Continued from Page 1B

transfer the property to the Golden Gate National Recreation Area in three years. To do so, it is seeking \$15 million from the federal government and plans to raise matching funds locally.

However, completion of the transfer is contingent upon congressional approval, which trust officials say they'll probably get with the help of Rep. Tom Lantos, D-San Mateo, a longtime supporter of open-space preservation efforts. Lantos said Tuesday he plans to introduce a bill that would add the property to the recreation area.

Twice before, Lantos has successfully introduced legislation to add Peninsula lands to the recreation area: more than 900 acres around Pacifica last fall, and the 1,000-acre Phleger Estate in Woodside in the early 1990s.

"This is a really exciting development," said Brian O'Neill, superintendent of the Golden Gate National Recreation Area. "From a national resource preservation point of view, it's extremely important to have access to that



WILLIAM MATTIAS — SPECIAL TO THE MERCURY NEWS

Peninsula Open Space Trust bought 4,262 acres between San Francisco and Half Moon Bay, known as Rancho Corral de Tierra, for nearly \$30 million. It's the second-largest parcel purchased by the trust.

land."

The recreation area currently spans 75,000 acres and is one of the most well-used national recreation areas in the country, drawing 18 million to 20 million visitors a

year, O'Neill said.

Peninsula Open Space Trust had been interested in the Rancho Corral de Tierra property for several years. In 1996, the property owners proposed building a housing

development on the site, but withdrew their plans after public outcry.

Contact Putsata Reang at preang@sjmercury.com or (650) 366-0173.

PENINSULA

AND THE BAY AREA

 EDITORIALS A28
 OPINION A29

A26 San Francisco Chronicle ☆☆☆☆

WEDNESDAY, MAY 9, 2001

Land trust buys huge coastal tract

Acreage in San Mateo County

 By Michael McCabe
 CHRONICLE STAFF WRITER

One of the most visible and important pieces of land on the San Mateo coast north of Half Moon Bay, rising almost 2,000 feet above Highway 1 to the top of Montara Mountain, has been acquired by a Peninsula land trust.

The 4,262-acre property, known as Rancho Corral de Tierra, is one of the largest undeveloped tracts remaining on the San Mateo Coast.

The Peninsula Open Space Trust announced yesterday that it had reached an agreement to buy the land for \$29.75 million.

The vast swath of land, which

surrounds the coastal towns of Moss Beach and Montara, is one of the major properties that will be protected through the land trust's \$200 million campaign, "Saving the Endangered Coast." That campaign began last month with two \$50 million gifts from the David and Lucile Packard Foundation and from the Gordon and Betty Moore Foundation.

Because of confidentiality agreements, land trust officials refused to identify the sellers of the property. But sources told The Chronicle that the land is being sold by the Robert Naify and Emil Magliocco families, both based in San Francisco.

"It is a fantastic piece of land and really symbolizes what we are trying to save with our Endangered Coast campaign," said Walter Moore, vice president of the Peninsula Open Space Trust (and no relation to Gordon and Betty Moore). "It protects entire viewsheds and presents wonderful opportunities to (eventually) hook up with the Bay Ridge Trail and Coastal Trail."

The land includes two of the four main peaks of Montara Mountain — Montara Knob and

South Peak, which offer sweeping views of the entire Bay Area — and some of the richest farmland in Northern California. Brussels sprouts, pumpkins, leeks, fava beans and peas are currently being farmed on the property by growers renting from the owners, Moore said. Farming is expected to continue through agricultural easements.

Environmentalists hailed the announcement, saying it ends a long effort to develop the property. It was on sale in recent years for \$52 million.

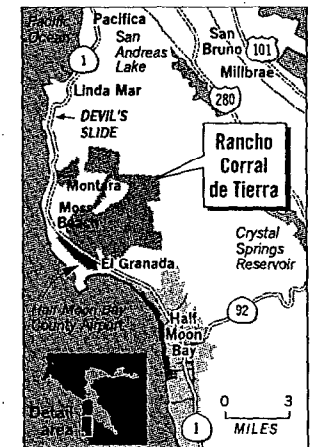
"This is a real biggie," said Lennie Roberts, a legislative lobbyist for the influential Committee for Green Foothills. "This closes the chapter on grand plans by Westinghouse, Inc. and other developers in the 1970s and '80s to bring Daly City-style development down to the coast."

The acquisition will also protect all or part of four watersheds, the Denniston, San Vicente, Montara and Martini creeks.

The land supports the endangered peregrine falcon, San Bruno elfin butterfly, San Francisco garter snake and the threatened red-legged frog. Because of the ocean influence and rapid altitude changes, plants grow on the property that are found nowhere else in the world, Moore said.

More than four miles of the property's boundary are contiguous to existing public lands — state and county parks, the San Francisco Water Department and the Golden Gate National Recreation Area.

Moore said money from private donors will be needed to complete the purchase. The land trust will also request about \$15 million in federal funding from



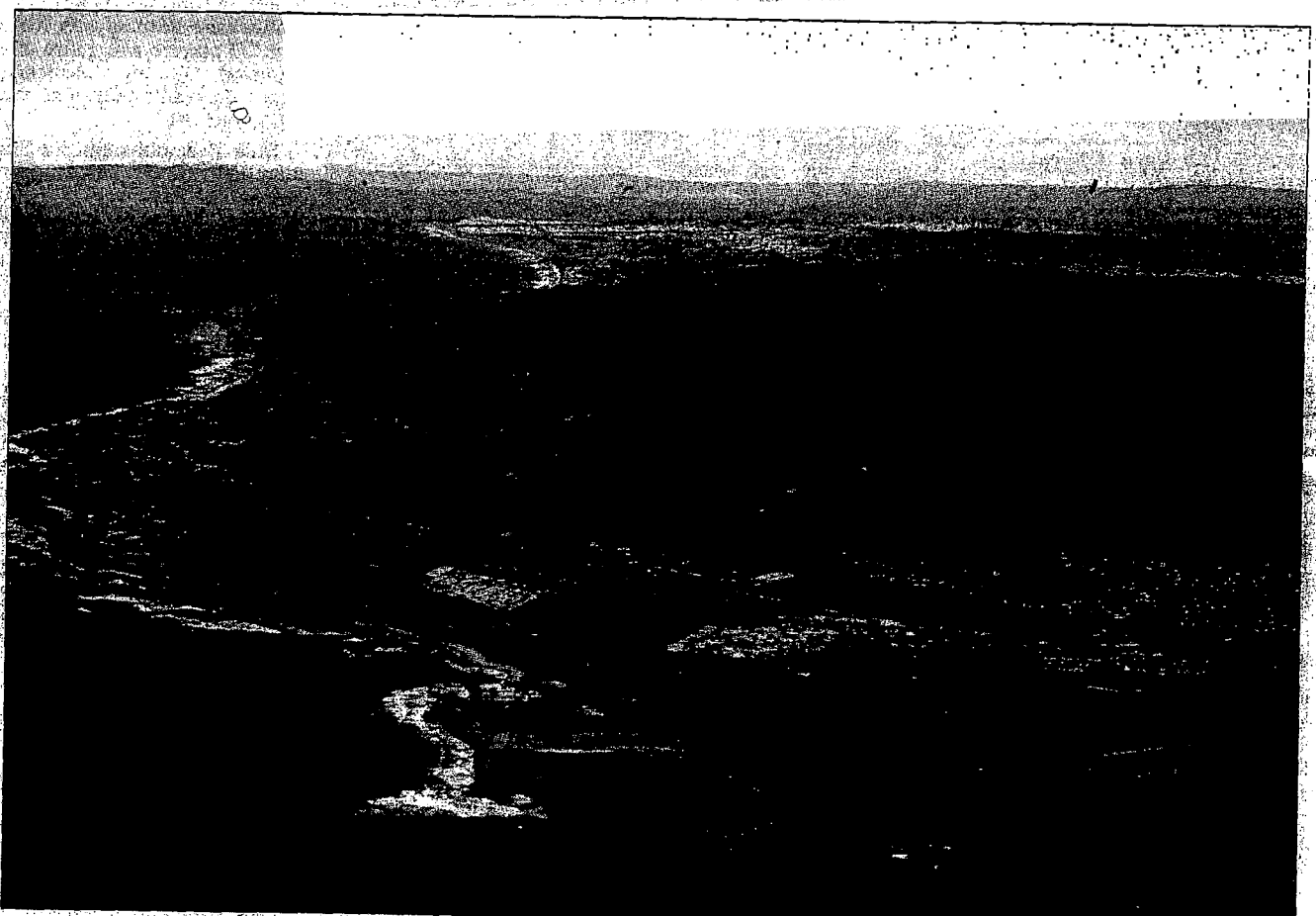
Chronicle Graphic

the Land and Water Conservation Fund. The land trust plans to transfer the property to federal and state ownership within three years.

E-mail Michael McCabe at
 mmccabe@sfgate.com

San Mateo County Times

COASTAL SANCTUARY SAVED



Submitted photo

The 4,262-acre property known as Rancho Corral de Tierra has been purchased by the Peninsula Open Space Trust. It borders the coastal towns of Montara, Moss Beach, and El Granada, and extends high into the foothills.

Land group acquires 'Rancho' terrain

By Laura Linden
STAFF WRITER

Flush with \$100 million in foundation grants, the Peninsula Open Space Trust announced Tuesday it has acquired one of the largest swaths of undeveloped land on the Coastside — 4,262 acres of agricultural and foothill terrain extending from Montara to El Granada.

For decades the land, known as Rancho Corral de Tierra, was passed on from one developer to another, each with the hope

Area bought for nearly \$30 million will be used for hiking, farming

of perpetuating suburbia on the coast.

But now the land will be set aside for hiking trails and farming, and for the protection of watershed and animal and plant habitats.

"Instead of large estate homes we'll have lovely open space," said Walter Moore, vice president of the Peninsula Open Space Trust, or POST. "It is just extraordinary, because this land

is only 10 miles south of San Francisco and six miles north of Half Moon Bay."

Moore said the land purchase might lead to the creation of a trail that links the California Coastal Trail at the ocean to the Bay Area Ridge Trail in the foothills east of the property.

That made ridge trail cru-



Please see **Rancho**, NEWS-8

MICHAEL SWANTAK — Staff



REVIEW

and Pescadero

Wednesday, May 30, 2001

Serving The San Mateo County Coastside since 1898

Vol. 103 - No. 5

Lantos wants huge Mid-Coast tract for park

Change of power in U.S. Senate boosts bill's chances for addition to GGNRA

By NICOLE ACHS FREELING
Half Moon Bay Review

A bid to turn a wide swath of the rural Mid-Coast into federal parkland could provide strong new protections for an area considered to be one of the most scenic and environmentally rich on the coast.

"This is more than 5,000 acres of absolutely (one of) the most beautiful spots in the whole U.S.," U.S. Rep. Tom Lantos, D-San Mateo, said, "Your spirit soars when you see it."

The bulk of the land is a parcel known as Rancho Corral de Tierra, meaning "Corral of the Earth," a 4,632-acre area adjacent to Highway 1 behind Moss Beach and Montara.

The Peninsula Open Space Trust acquired an option to buy the parcel earlier this month in one of its largest land bids ever.

But POST needs the federal government's help in coming up with half the almost \$30 million needed to complete the purchase.

The environmental trust is working with Bay Area congressional representatives to have the government incorporate the land as part of the Golden Gate National Recreation Area.

While the land trust's option currently prohibits development on the property, long-term protection of the land will not be secure until a permanent owner, such as a parks agency, takes it over, according to POST President Audrey Rust.

Lantos introduced legislation on May 23 to expand the GGNRA boundaries to include Rancho Corral, along with an additional 825 acres of surplus land around Devil's Slide from the California Department of Transportation.

The GGNRA, the country's largest urban park, is composed of 74,000 acres of land, stretching along

the coast from Marin County south to Daly City and includes the Presidio at the mouth of San Francisco Bay.

It also includes a couple of inland parcels of land in Pacifica — Milagra Ridge Park and Sweeney Ridge. The proposed lands begin three miles southwest of the Pacifica parkland.

Lantos' bill would make the hills surrounding Montara and Moss Beach the southern gateway to the park.

"This is a model piece of legislation that would protect our natural resources in an age when they



Rep. Tom Lantos



See LANTOS, Page 9A

San Jose Mercury News

Opinion

THE MERCURY NEWS EDITORIAL BOARD

JOE NATOLI *President and Publisher*
ROB ELDER *Vice President and Editor*

Barbara Vroman *Associate editor*
Phil Yost *Chief editorial writer*
Sharon Noguchi *Editorial writer*

Patty Fisher *Editorial writer*
Barbara Egbert *Editorial writer*
John Fensterwald *Editorial writer*

Travis Armstrong *Editorial writer*
Roqua Montez IV *Editorial writer*
Jim Braly *Commentary editor*

John Swartley *Letters editor*
Mark Fiore *Editorial cartoonist*

Open space trust gets a big helping hand

THE Peninsula Open Space Trust announced plans last week to raise \$200 million in three years to preserve some of the most spectacular real estate in California — 20,000 acres of San Mateo County coastline stretching from Pacifica to Año Nuevo.

While \$200 million may sound like a tall order, POST is already halfway toward its goal, thanks to the generosity of two prominent Silicon Valley families. The David and Lucile Packard Foundation and the Gordon and Betty Moore Foundation each donated \$50 million to the campaign.

Now for the hard part: lining up the other \$100 million. POST is depending on smaller private donations as well as federal and state money to complete the package.

POST's campaign is the most ambitious such effort by a local land trust in the United States. The payoff — unobstructed views of our Pacific coast, protected for future generations — is well worth the investment.