

64'-2" +/-
T.O. LANTERN ROOF

44'-7" +/-
BASE OF LANTERN

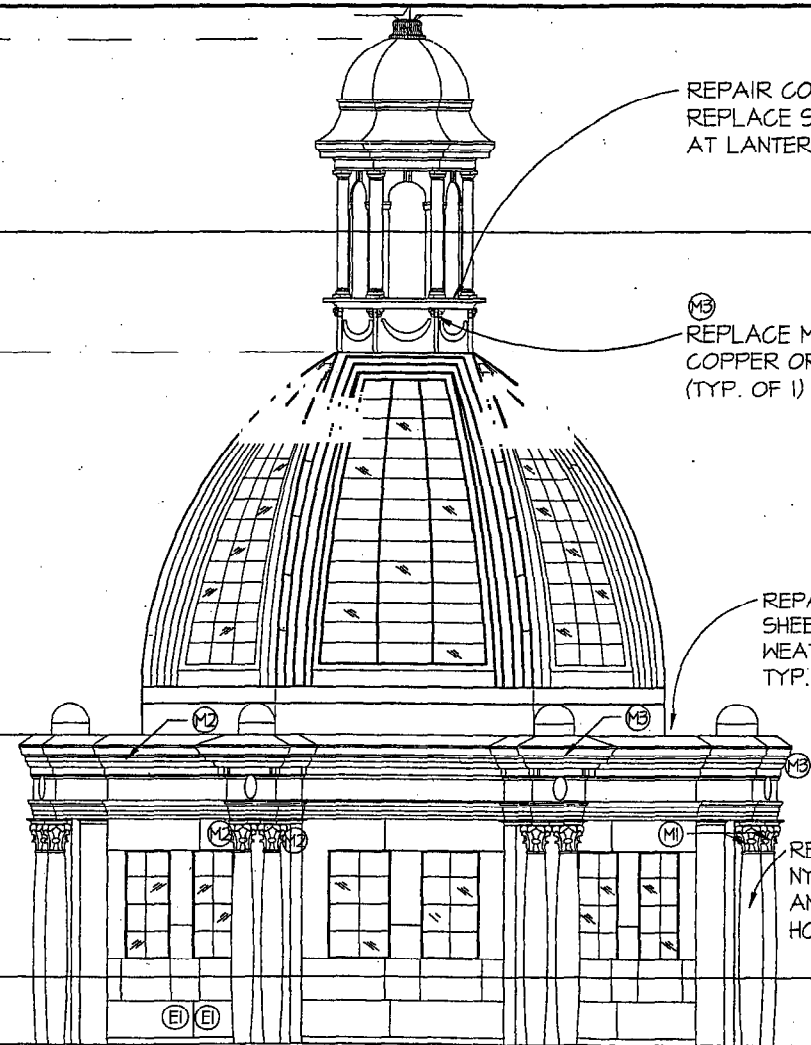
19'-10" +/-
T.O. WEATHERING

0'-0"
ROOF

LANTERN

DOME

DRUM



SEGMENT 4

SEGMENT 5

SEGMENT 6

REPAIR CODES

- (M1) REPAIR SEAM IN SHT. MTL.
- (M2) PATCH SHT. MTL. W/(N) COPPER
- (M3) REPLACE MISSING ELEMENT
- (M4) PATCH SHT. MTL. WITH PATCH MATERIAL
- (M5) PATCH SHEET METAL WITH SEALANT
- (E1) PROVIDE SEALANT AT (E) ELEC. ATTACHMENTS

SHEET NOTES

1. CUPOLA WATERPROOFING: REMOVE (E) SEALANT AT COPPER SHT. MTL. & WINDOWS & REPLACE WITH NEW. ALL SHEET METAL SEAMS TO RECEIVE SEALANT. (SEE DETAIL 1/A3.2)
2. WATERPROOFING AT NAILS & SCREWS: REMOVE (E) SEALANT & LOOSE & FERROUS NAILS. APPLY SEALANT TO NAIL & SCREW PENETRATIONS, AS SPECIFIED.
3. REPAIR COPPER AT WEATHERING, REPLACE MISSING DENTLS, AND RESHAPE COPPER ORBS.
4. REPAIR COPPER ELEMENTS ABOVE WEATHERING: REPAIR OPEN SEAMS, REATTACH LOOSE ELEMENTS, AND REPLACE MISSING ORNAMENT (ADDITIVE).
5. GLAZING REPAIRS: SALVAGE AND RESET DOME GLAZING. PROVIDE (N) ST. STL. "S" CLIPS AND NEW GLAZING PUTTY AS REQUIRED. CLEAN ALL GLAZING AT DRUM AND DOME.
6. LIGHT FIXTURES AT WEATHERING & LANTERN HATCH, ARE N.I.C.
7. REMOVE ALL DUCT TAPE, TYP.

APPROVED: _____
DATE: _____
NEIL R. CULLEN,
DIRECTOR OF PUBLIC WORKS
R. C. E. #19109 EXPIRES 9/30/2005



REVISIONS		
NO.	DATE	DESCRIPTION

DESIGNED BY: LC
CHECKED BY: GDM
DRAWN BY: RC

CUPOLA WATERPROOFING
SAN MATEO COUNTY COURTHOUSE
ELEVATIONS - SEGMENTS 4, 5, 6

SCALE: 1/8"=1'-0"
DATE: 03/01/2002
FILE NO: 00155.01

NEIL R. CULLEN, DIRECTOR OF PUBLIC WORKS
SAN MATEO COUNTY

555 COUNTY CENTER, 5TH FLOOR
REDWOOD CITY, CALIFORNIA 94063-1665

A2.2