

# OWNERS' STATEMENT

WE HEREBY STATE THAT WE ARE THE OWNERS OF, OR HAVE SOME RIGHT, TITLE OR INTEREST IN AND TO THE REAL PROPERTY INCLUDED WITHIN THE SUBDIVISION SHOWN UPON THIS MAP: AND THAT WE ARE THE ONLY PERSONS WHOSE CONSENT IS NECESSARY TO PASS CLEAR TITLE TO SAID PROPERTY AND WE HEREBY CONSENT TO MAKING AND FILING OF SAID MAP AND SUBDIVISION AS SHOWN WITHIN THE DISTINCTIVE BORDER LINE.

WE HEREBY DEDICATE TO PUBLIC USE EASEMENTS FOR ANY AND ALL PUBLIC SERVICE FACILITIES INCLUDING POLES, WIRES, CONDUITS, GAS, WATER AND ALL APPURTENANCES TO THE ABOVE, UNDER, UPON OVER, ALONG AND THROUGH THE LAND DESIGNATED AND DELINEATED AS "P.U.E." (PUBLIC UTILITY EASEMENT); SAID EASEMENTS ARE TO BE KEPT OPEN AND FREE OF BUILDINGS AND STRUCTURES EXCEPT PUBLIC SERVICE STRUCTURES, CURB, GUTTERS, IRRIGATION SYSTEMS, PRIVATE UTILITY LINES, AND APPURTENANCES THERETO, AND LAWFUL FENCES.

WE ALSO HEREBY DEDICATE TO THE PUBLIC THAT AREA SHOWN AS "EMERGENCY VEHICLE ACCESS EASEMENT" (E.V.A.C) UPON AND OVER SAID PRIVATE STREET AS SHOWN ON SAID MAP.

WE ALSO HEREBY DESIGNATE THESE AREAS SHOWN AS "PRIVATE STORM DRAIN EASEMENT" FOR THE PURPOSE OF PRIVATE STORM DRAIN IMPROVEMENTS AND OVERLAND FLOW OF WATER.

OWNER: SAN MATEO REAL ESTATE, INC., A CALIFORNIA CORPORATION

BY: \_\_\_\_\_

BY: \_\_\_\_\_

## EMERALD HILLS ESTATES

BEING A SUBDIVISION OF THAT CERTAIN PARCEL OF LAND DESCRIBED IN DEED FROM JAMES A. THOMPSON TO SAN MATEO REAL ESTATE INC., RECORDED AUGUST 25, 1999 IN SAN MATEO COUNTY RECORDS, DOCUMENT NO. 1999-145679, SAN MATEO COUNTY, CALIFORNIA

**SAN MATEO COUNTY**

**CALIFORNIA**

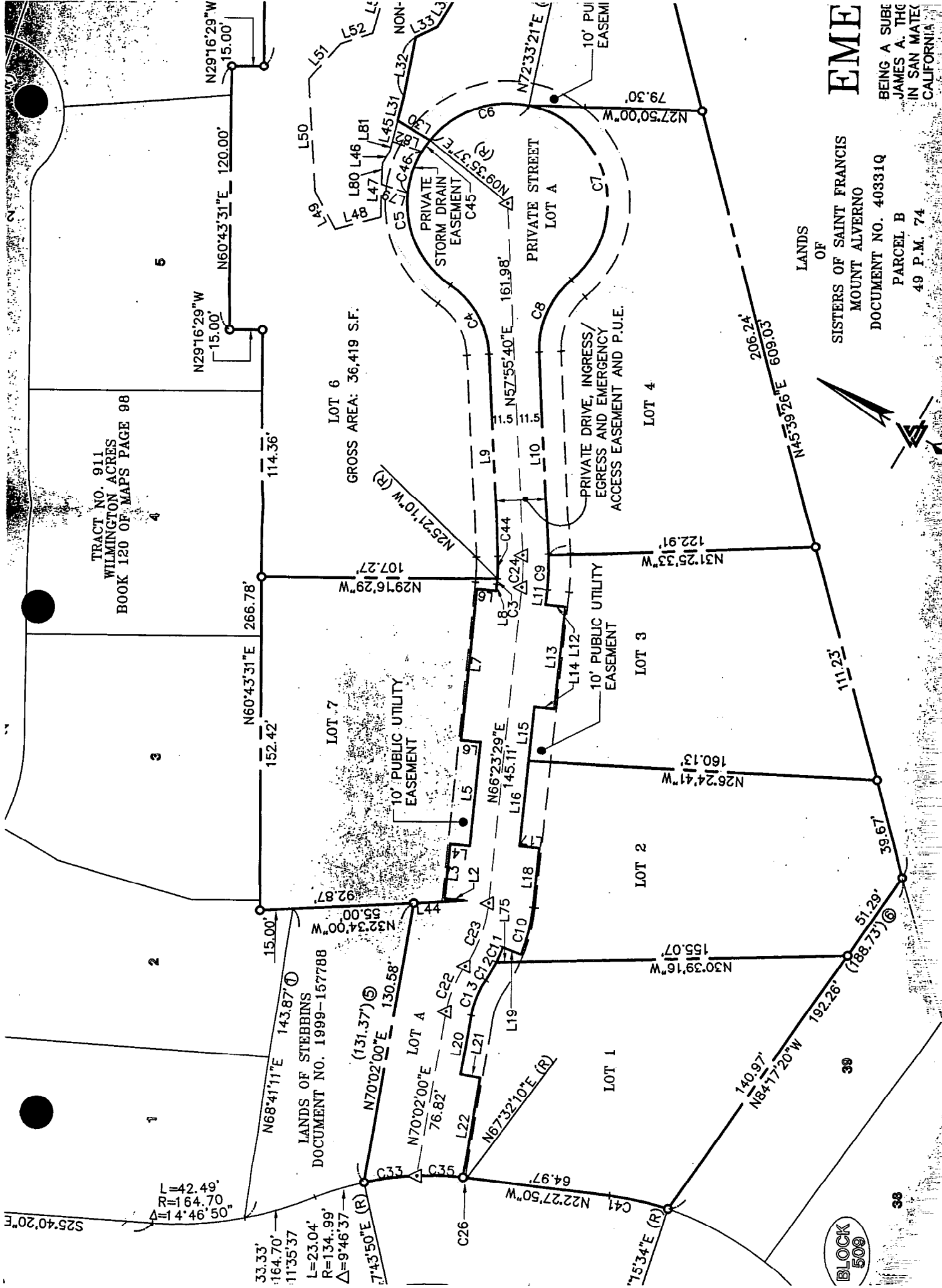
AUGUST 2001



**LEA & SUNG ENGINEERING, INC.**

CIVIL ENGINEERS • LAND SURVEYORS

2495 INDUSTRIAL PARKWAY WEST  
HAYWARD, CALIFORNIA 94545  
(510) 887-4086



TRACT NO. 911  
WILMINGTON ACRES  
BOOK 120 OF MAPS PAGE 98

LOT 6  
GROSS AREA: 36,419 S.F.

LANDS OF STEBBINS  
DOCUMENT NO. 1999-157788

BLOCK  
509

EME

SISTERS OF SAINT FRANCIS  
MOUNT ALVERNO

DOCUMENT NO. 40331Q

PARCEL B  
49 P.M. 74

BEING A SUBE  
JAMES A. THE  
IN SAN MATEO  
CALIFORNIA

LANDS  
OF

