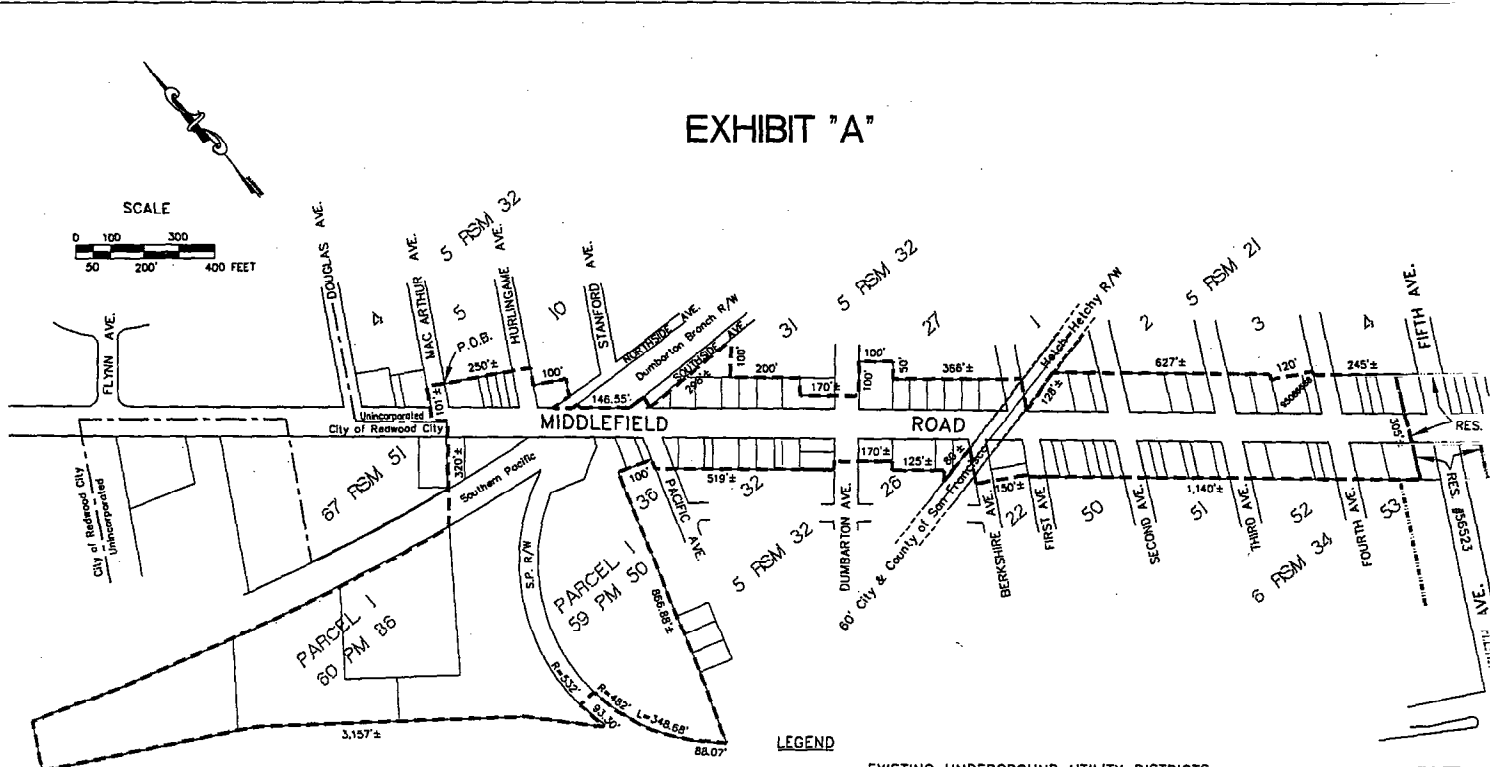
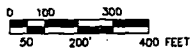


EXHIBIT "A"

SCALE



LEGEND

- EXISTING UNDERGROUND UTILITY DISTRICTS
- - - - - PHASE II - PROPOSED UNDERGROUND UTILITY DISTRICT



DESIGNED BY: AS
 CHECKED BY: AMS
 DRAWN BY: CRH

PROPOSED UNDERGROUND UTILITY DISTRICT - PHASE II
MIDDLEFIELD ROAD - REDWOOD CITY AREA

NEIL R. CULLEN, DIRECTOR OF PUBLIC WORKS
 SAN MATEO COUNTY

SCALE: AS SHOWN
 DATE: 9/21/02

FILE NO: E4670000

555 COUNTY CENTER, 5TH FLOOR
 REDWOOD CITY, CALIFORNIA 94063-1665