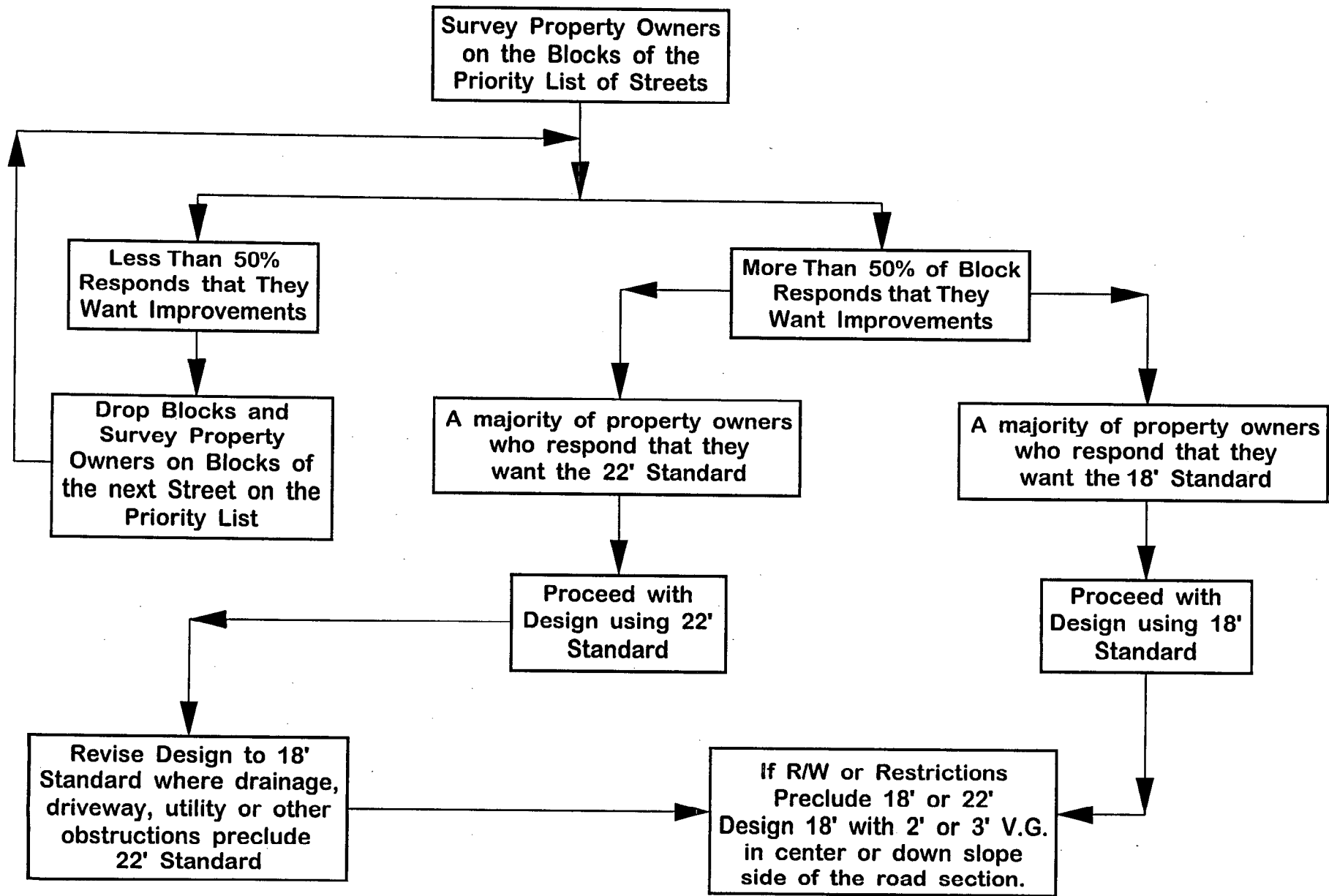


# Design Decision Tree



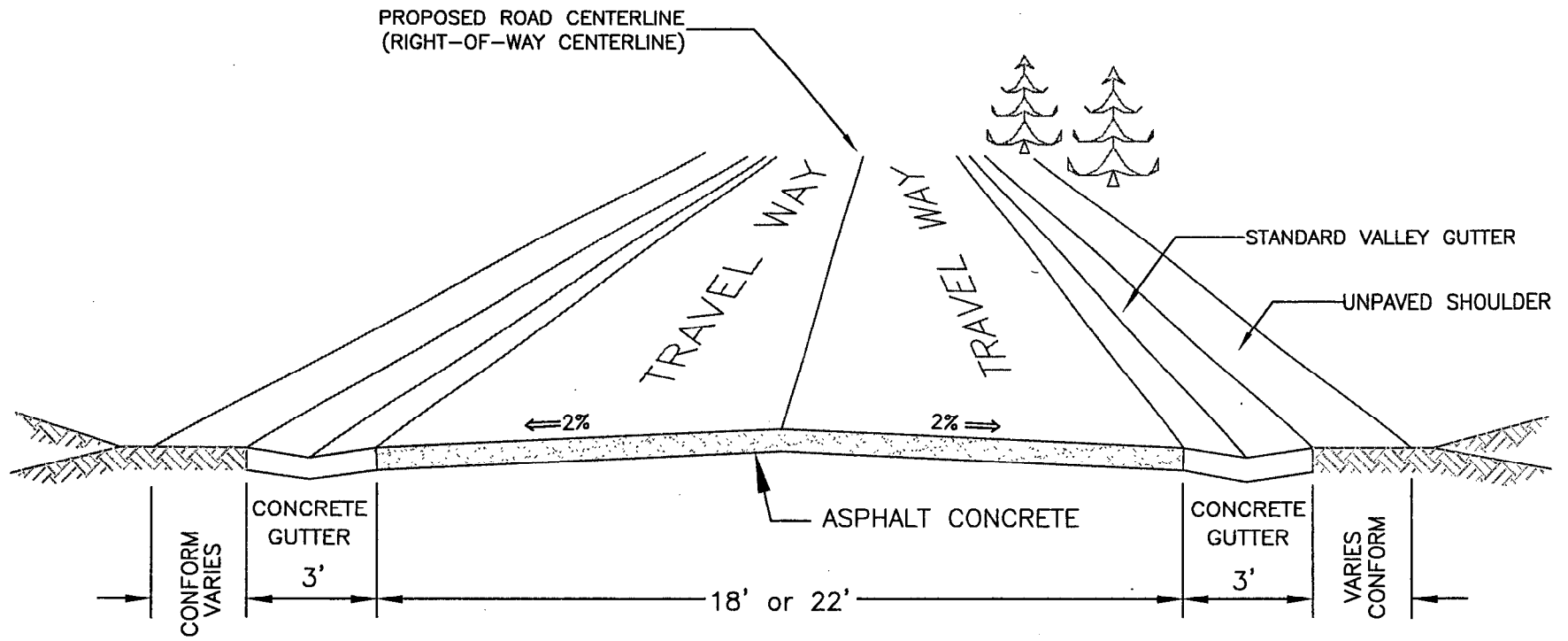
\* A Block is the length of road between cross streets.

**WEST MENLO PARK  
CEDAR & ASHTON VOTING SUMMARIES**

Street	% 18' vote*	% 22' vote*	Current std	Proposed std
Cedar (upper)	23%	38%	22'	22'
Cedar (lower)	60%	22%	18'	18'
Ashton (upper)	25%	57%	22'	22'
Ashton (lower)	49%	20%	22'	18'

\* Percent of total block

\*\* For 22' majority vote, design can default to 18 foot road width if driveways, drainage, landscaping etc...would be significantly impacted by the wider design



**18 or 22-foot-wide Travel Way with 3-foot-wide Valley Gutter Typical Section**

NO SCALE