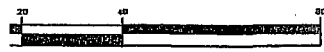


GRAPHIC SCALE



(IN FEET)
1 inch = 20 ft.

LENGTH	DELTA
00'	29.43'
00'	5.76'
50'	18.01'
00'	20.46'
50'	21.20'
00'	23.99'
00'	46.17'
	41'07"55"
	32'59"02"
	18'35"47"
	27'54"16"
	62'17"28"
	33'31"13"
	11'45"29"

LEGEND AND NOTES

- ⊙ FOUND POINT IN MONUMENT CASTING (AS NOTED)
- SET 3/4" IRON PIPE W/ TAG "PLS 6163"
- ⊠ SET 20d NAIL W/TAG "PLS 6163" IN AC PAVING
- () RECORD DATA

- P.U.E PUBLIC UTILITY EASEMENT
- P.S.D.E PRIVATE STORM DRAIN EASEMENT
- E.V.A.E EMERGENCY VEHICLE ACCESS EASEMENT
- S.S.E. SANITARY SEWER EASEMENT

MAP REFERENCE: 33 PM 24, 38 PM 2, 28 PM 37, 60 PM 58, 20 PM 24

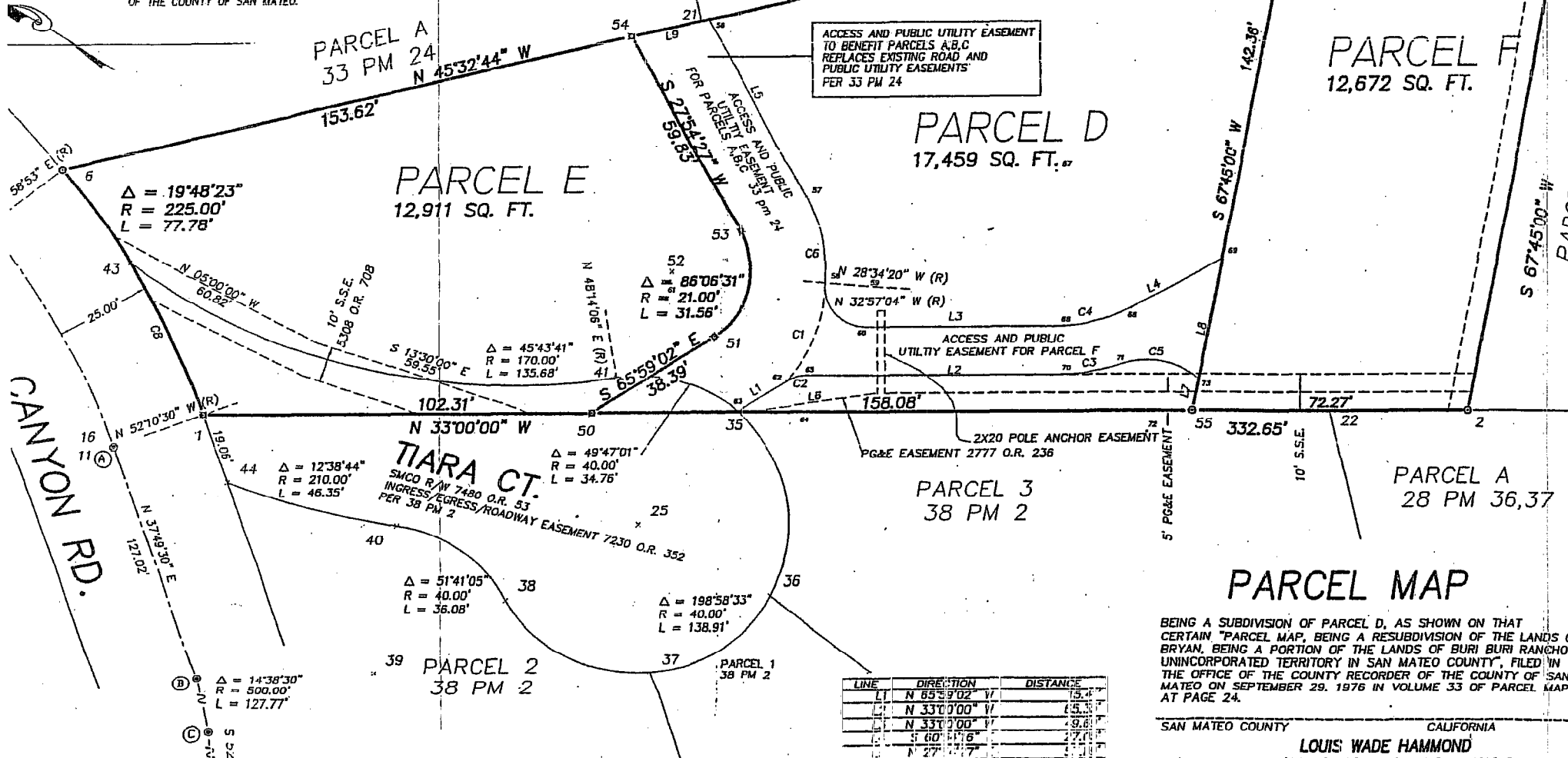
FOUND BOUNDARY CONTROL RECORD TO MEASURED INVERSES

NOTE	DESCRIPTION	BEARING	DISTANCE
⊙	FD MONUMENT PER 28 PM 37	N 13°41'23" E	0.44'
⊙	FD MONUMENT PER 28 PM 37	N 75°00'35" E	0.09'
⊙	FD MONUMENT PER 28 PM 37	N 12°05'07" V	0.34'
⊙	FD MONUMENT PER 28 PM 37	N 23°24'54" V	0.45'

NOTE: ON 28 PM 37 MONUMENTS WERE NOT ACCEPTED AS THE CENTERLINE. THE MONUMENTS FOUND ON THIS SURVEY ARE IN AGREEMENT WITH 28 PM 37.

BASIS OF BEARINGS

THE BEARING SOUTH 72°02'40" EAST BETWEEN THE FOUND POINTS AS SHOWN ON THAT CERTAIN PARCEL MAP RECORDED IN BOOK 51 OF PARCEL MAPS AT PAGE 35 IN THE OFFICE OF THE RECORDER OF THE COUNTY OF SAN MATEO.



ACCESS AND PUBLIC UTILITY EASEMENT TO BENEFIT PARCELS A,B,C REPLACES EXISTING ROAD AND PUBLIC UTILITY EASEMENTS PER 33 PM 24

ACCESS AND PUBLIC UTILITY EASEMENT FOR PARCEL F

PG&E EASEMENT 2777 O.R. 236

LINE	DIRECTION	DISTANCE
L1	N 65°39'02" W	15.4'
L2	N 33°00'00" W	15.3'
L3	N 33°00'00" W	9.6'
L4	S 60°41'16" E	12.7'
L5	N 27°11'11" E	11.4'

PARCEL MAP

BEING A SUBDIVISION OF PARCEL D, AS SHOWN ON THAT CERTAIN "PARCEL MAP, BEING A RESUBDIVISION OF THE LANDS OF BRYAN, BEING A PORTION OF THE LANDS OF BURI BURI RANCHO I UNINCORPORATED TERRITORY IN SAN MATEO COUNTY, FILED IN THE OFFICE OF THE COUNTY RECORDER OF THE COUNTY OF SAN MATEO ON SEPTEMBER 29, 1976 IN VOLUME 33 OF PARCEL MAPS AT PAGE 24.