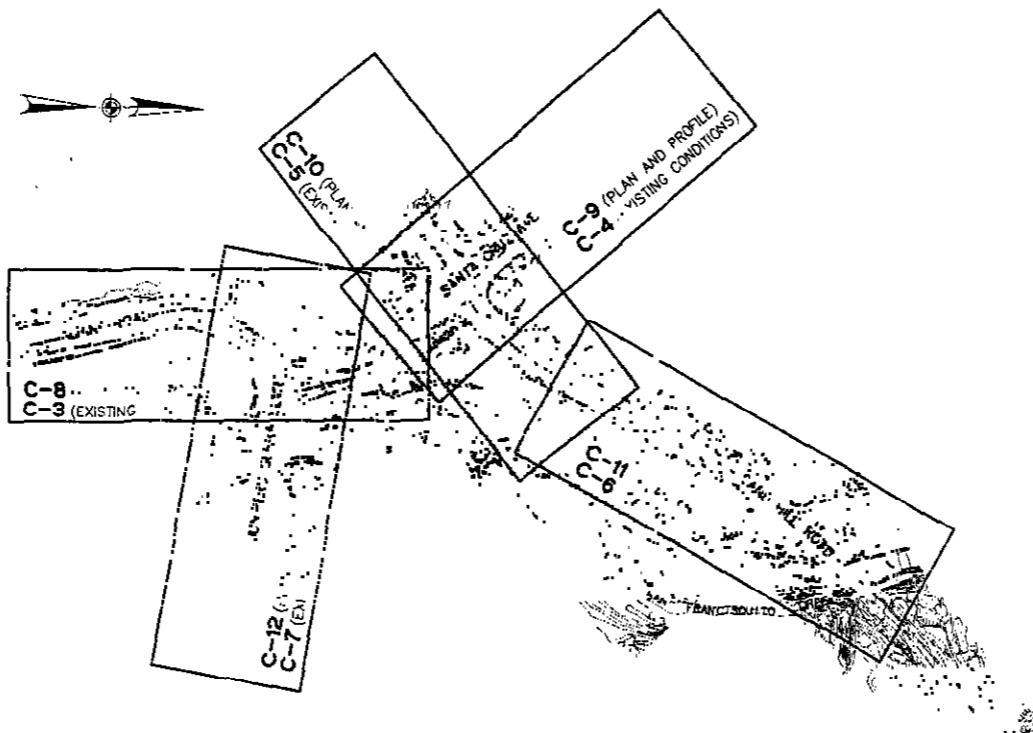
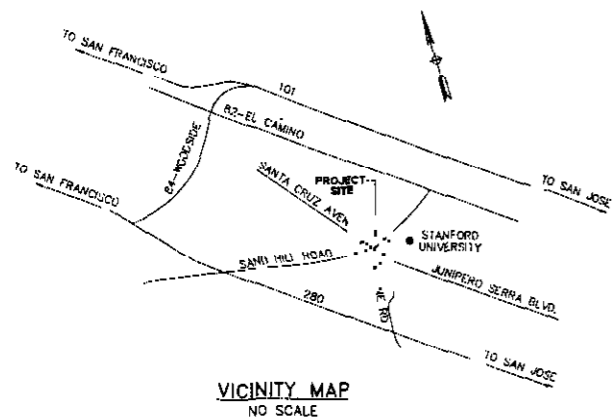


DESIGN DEVELOPMENT PLANS SAND HILL ROAD IMPROVEMENT PROJECTS

FOR
SANTA CRUZ AVENUE/SAND HILL ROAD/
JUNIPERO SERRA BOULEVARD/ ALPINE ROAD
MENLO PARK, CALIFORNIA



KEY MAP FOR SHEETS C-3 TO C-12
NO SCALE



INDEX OF SHEETS

DWG. NO.	SHEET NO.	DESCRIPTION
C-1	1	TITLE SHEET
C-2	2	TYPICAL SECTIONS
C-3 TO C-4	3-4	SANTA CRUZ AVENUE EXISTING SITE CONDITIONS
C-5 TO C-6	5-6	SAND HILL ROAD EXISTING SITE CONDITIONS
C-7	7	JUNIPERO SERRA BLVD. EXISTING SITE CONDITIONS
C-8 TO C-9	8-9	SANTA CRUZ AVENUE PLAN AND PROFILE
C-10 TO C-11	10-11	SAND HILL ROAD PLAN AND PROFILE
C-12	12	JUNIPERO SERRA BLVD PLAN AND PROFILE
TS-1 TO TS-3	13-15	SAND HILL ROAD TRAFFIC SIGNAL PLAN
S-1	16	SAN FRANCISCO CREEK BRIDGE GENERAL PLAN
M-1	17	LIMITS OF INTERSECTION MITIGATION AND CITY LIMIT LINES
PD-1 TO PD-3	18-20	ROADWAY GEOMETRICS

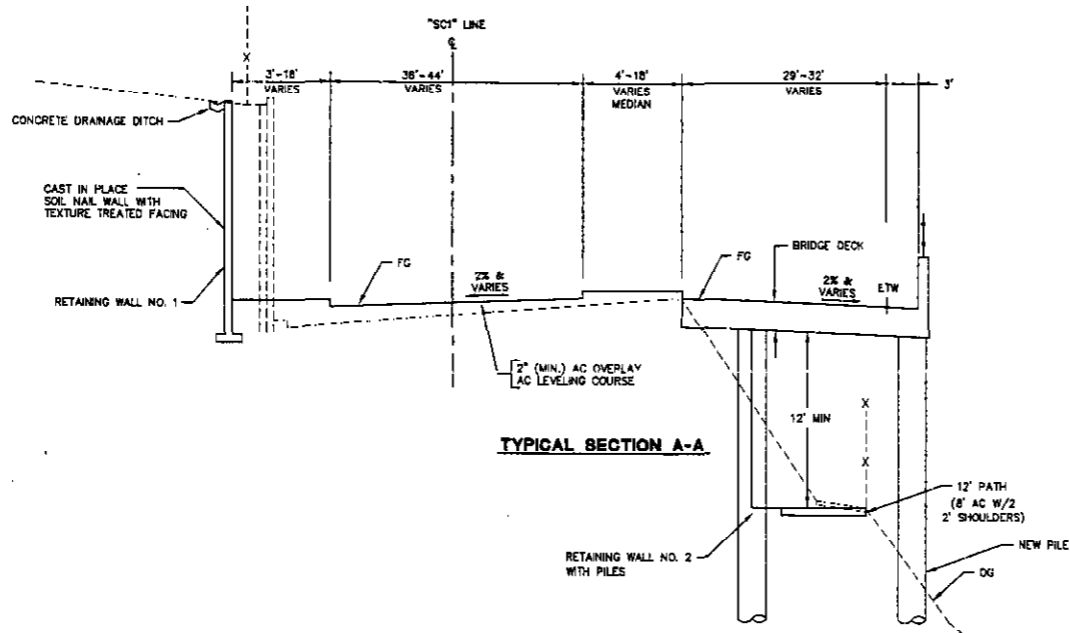
981 RIDGER PARK DRIVE
SUITE 100
SAN JOSE, CA 95131
408/467-9100
408/467-9188 (FAX)

Brian Kangas Fouk
Engineers • Surveyors • Planners

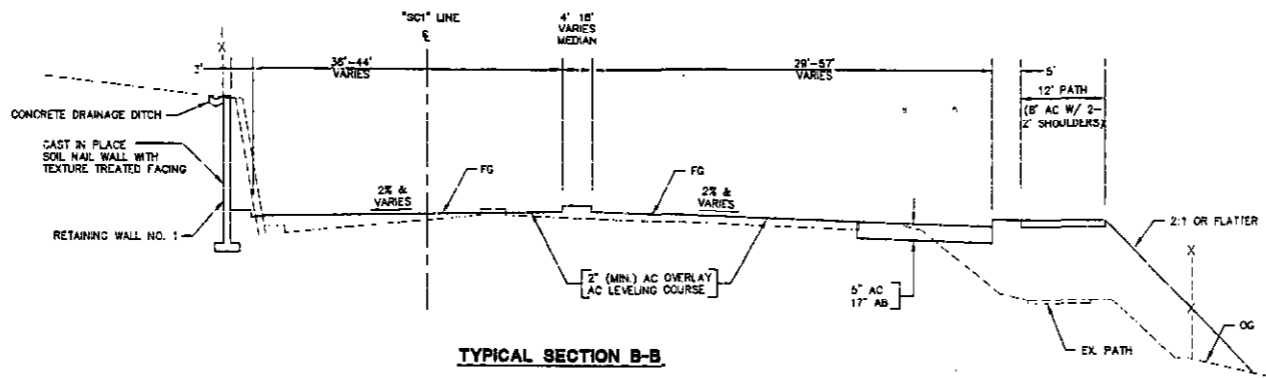
DESIGN DEVELOPMENT PLANS
SAND HILL RD IMPROVEMENT PROJECTS
TITLE SHEET
SAN MATEO COUNTY CALIFORNIA
MENLO PARK

Date	No.	Revision
07/19/02	1	APPROVED AND PREPARED FOR THE CLIENT
	2	REVISIONS

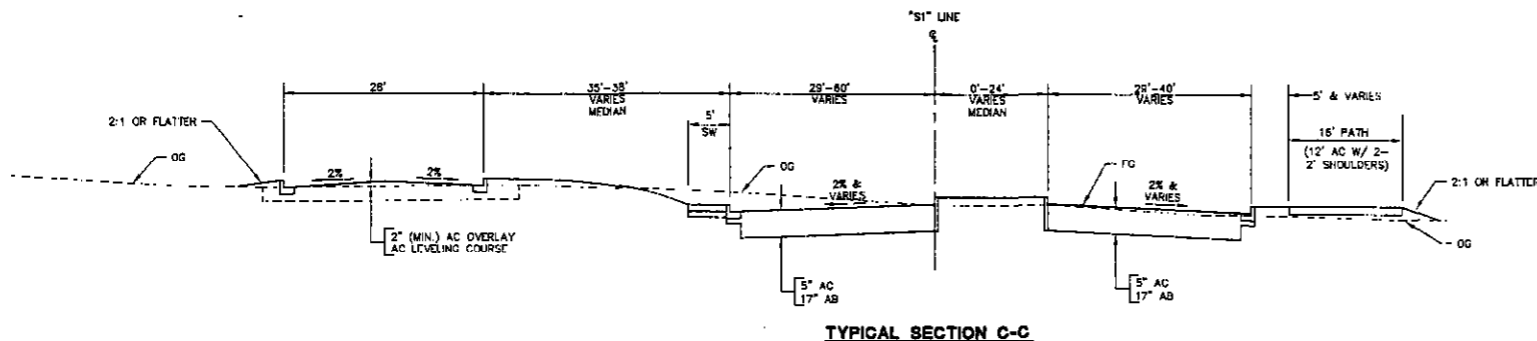
Drawing Number
EXHIBIT A
C-1
1 of 20



TYPICAL SECTION A-A



TYPICAL SECTION B-B



TYPICAL SECTION C-C

BEL RODER PARK DRIVE
SUITE 100
SAN JOSE, CA 95131
408/487-8189 (FAX)

Brian Kangas Fouk
Engineers • Surveyors • Planners

SAND HILL RD IMPROVEMENT PROJECTS
TYPICAL SECTIONS

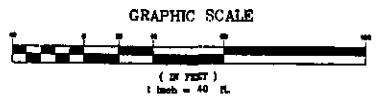
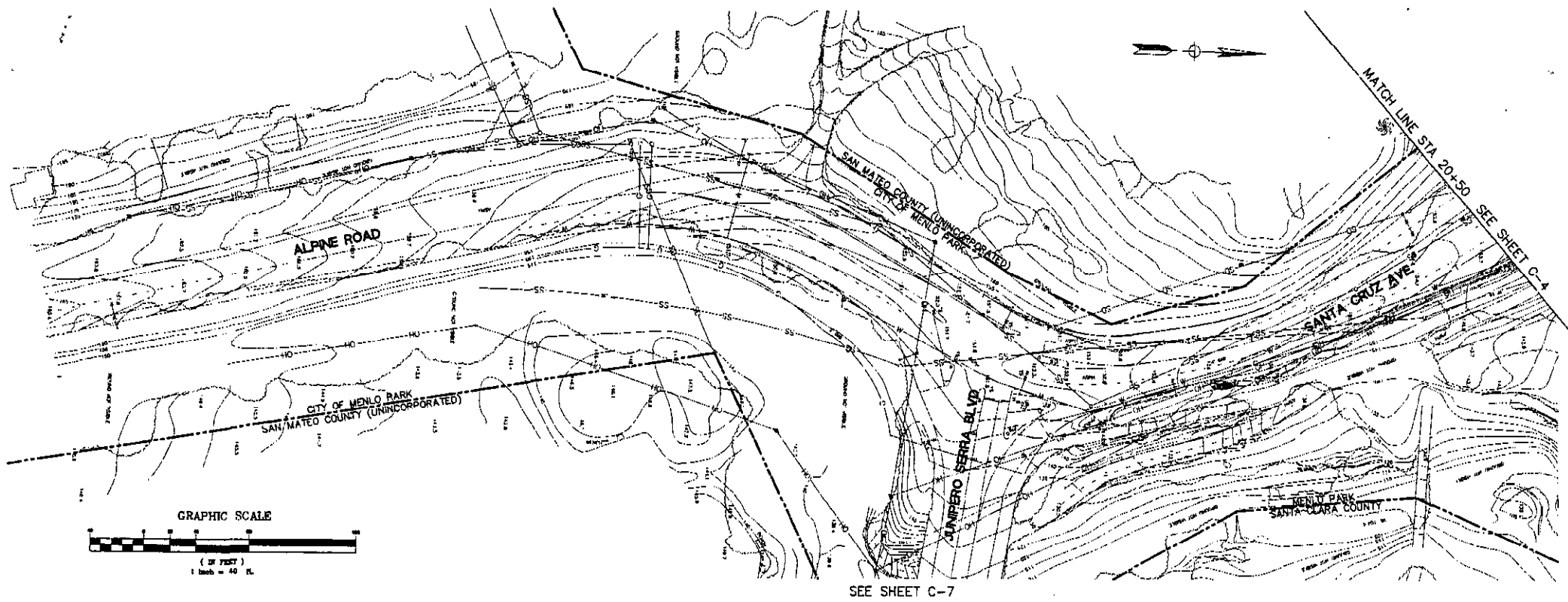
CALIFORNIA

SAN MATEO COUNTY

MENLO PARK

Date	07/18/22	No.	1	Revision	1
Scale	AS SHOWN	Drawn	1	Checked	1
Design		Drawn	2	Checked	2
Approved		Approved		Approved	
JOB NO. 2022-001					

Drawing Number:
EXHIBIT A
C-2
20



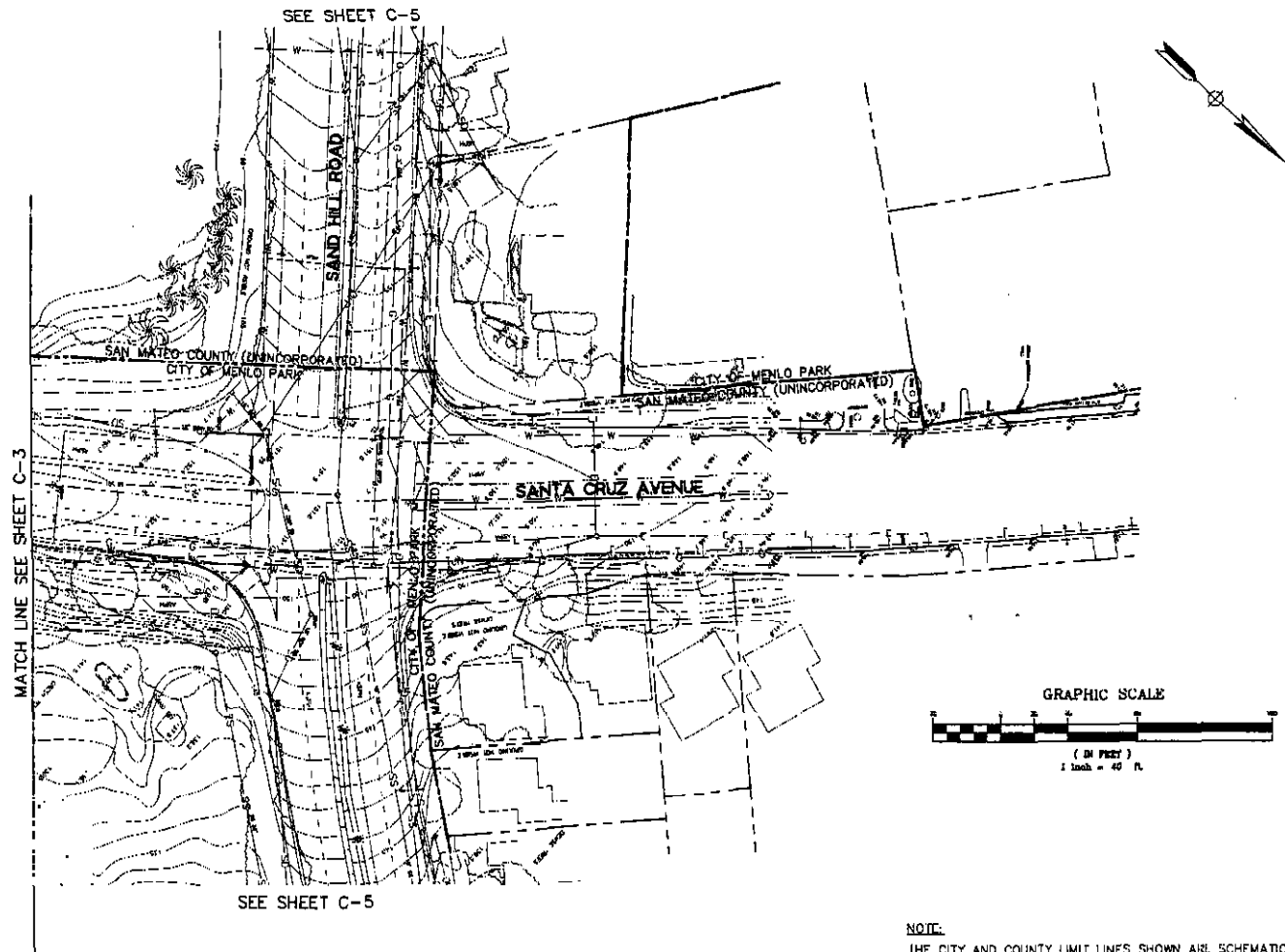
NOTE:
 THE CITY AND COUNTY LIMIT LINES SHOWN ARE SCHEMATIC
 IN NATURE AND HAVE NOT BEEN COMPILED FROM RECORD
 DATA SOURCES.

SRI RODER PARK OF
 THE CITY OF
 SAN MATEO COUNTY
 408/487-9100
 408/487-9199 (FAX)

Brian Kangas Fouk
 Engineers • Surveyors • Planners

SAND HILL RD IMPROVEMENT PROJECTS
SANTA CRUZ AVENUE
EXISTING SITE CONDITIONS
 SAN MATEO COUNTY CALIFORNIA
 MENLO PARK

Sheet No.	07/15/02	Scale	1"=40'
Drawn By	CAC	Checked By	CAC
Approved By	ROS	Date	07/15/02
Job No.	100-100000-0000		
EXHIBIT A C-3 3 20			



NOTE:
THE CITY AND COUNTY LIMIT LINES SHOWN ARE SCHEMATIC IN NATURE AND HAVE NOT BEEN COMPILED FROM RECORD DATA SOURCES.

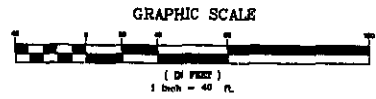
Date: 07/15/02 Scale: 1"=40' Design: Drawn: Approved: MAS Job No: 00000000	Revision: No. 1 Description: 1. Initial Design 2. Final Design
---	--

SAND HILL RD IMPROVEMENT PROJECTS
SANTA CRUZ AVENUE
EXISTING SITE CONDITIONS

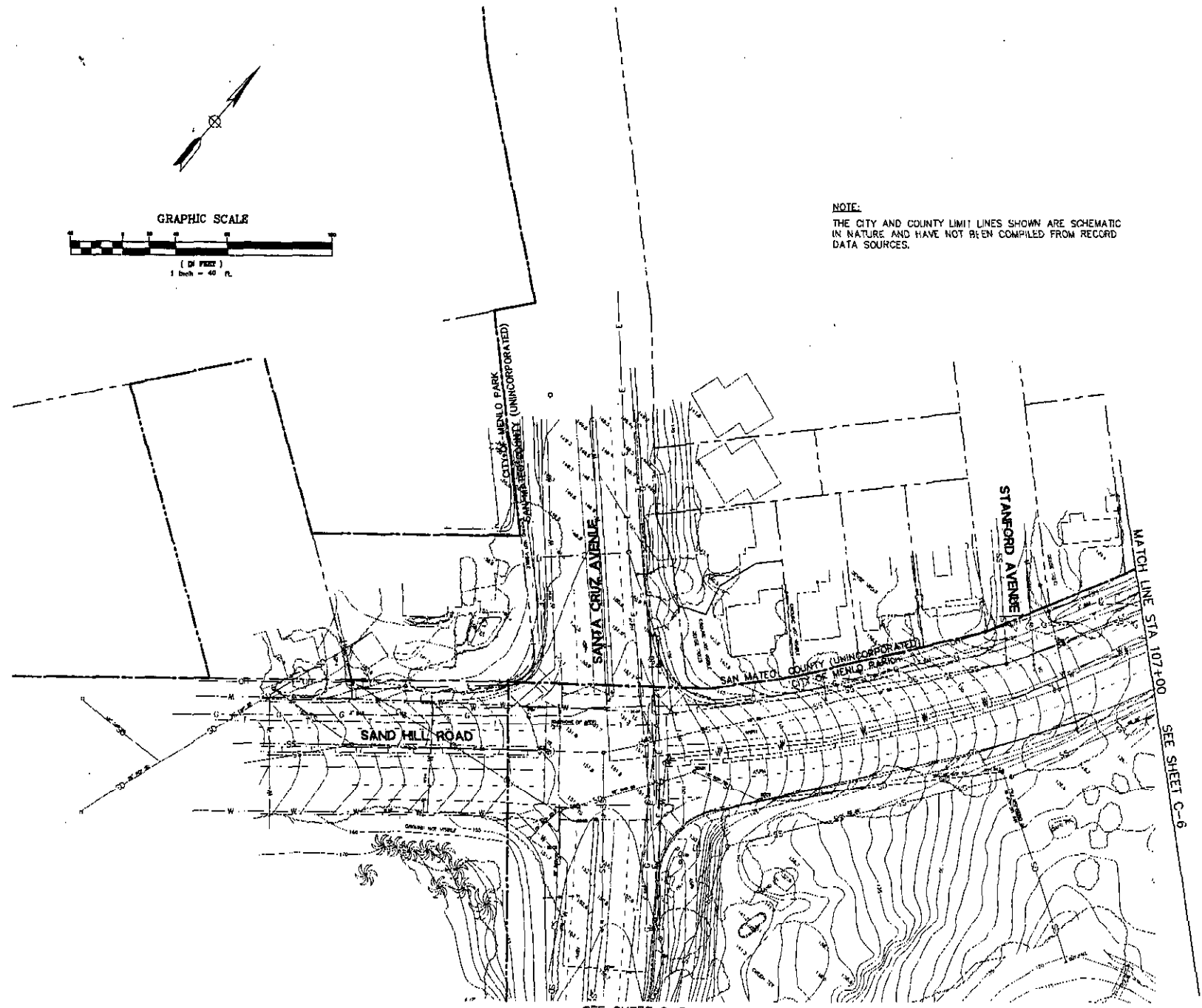
MENLO PARK SAN MATEO COUNTY CALIFORNIA

Brian Kangas Foulk
 Engineers • Surveyors • Planners

981 RODGER PARK DRIVE
 SUITE 100
 MENLO PARK, CA 94025
 415/497-9100
 415/497-9199 (FAX)



NOTE:
 THE CITY AND COUNTY LIMIT LINES SHOWN ARE SCHEMATIC
 IN NATURE AND HAVE NOT BEEN COMPILED FROM RECORD
 DATA SOURCES.



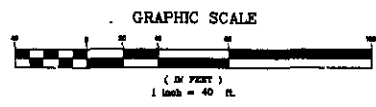
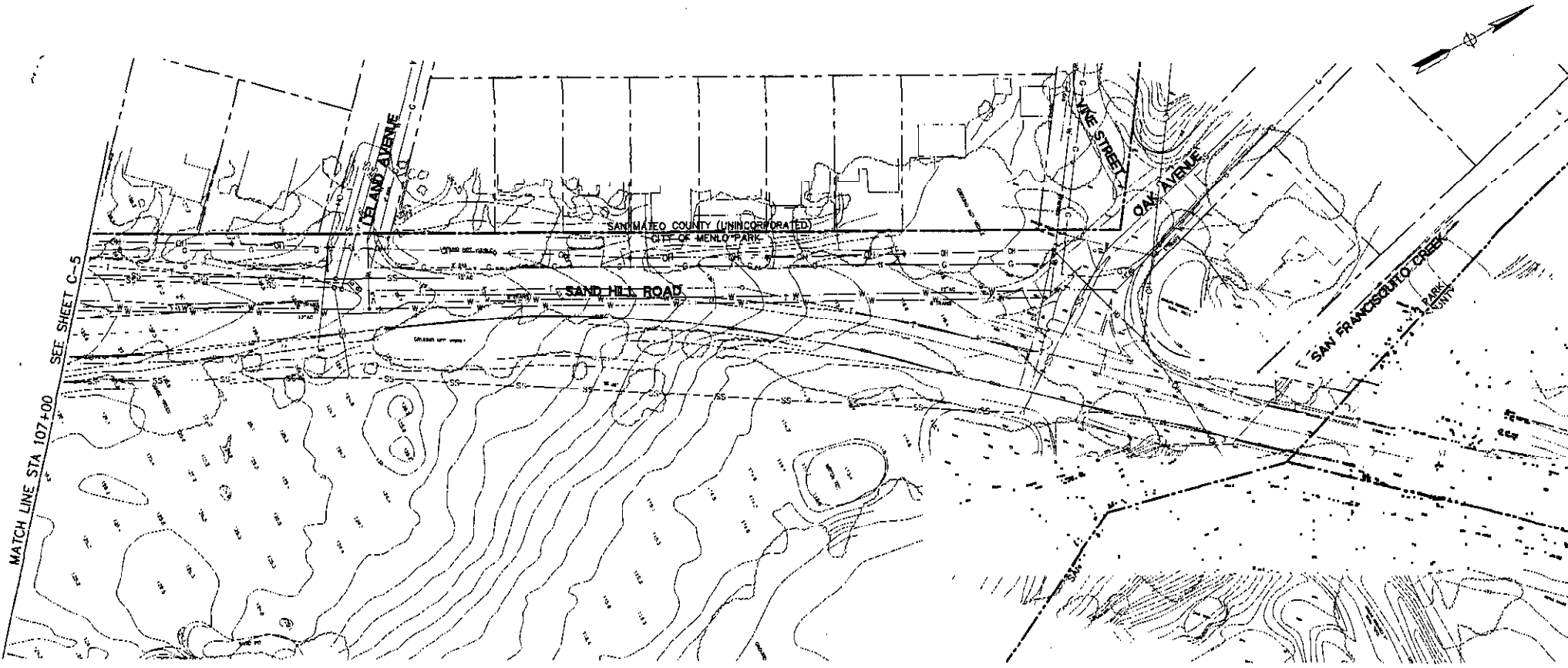
Date: 07/15/02	Revision No.
Scale: 1"=40'	1
Drawn: [Name]	2
Checked: [Name]	
Approved: [Name]	
Job No. [Number]	

SAND HILL RD IMPROVEMENT PROJECTS
SAND HILL ROAD
EXISTING SITE CONDITIONS
 MENLO PARK SAN MATEO COUNTY CALIFORNIA

881 BRIDGE PARK DRIVE
 SUITE 100
 SAN JOSE, CA 95131
 408/487-9100
 408/487-9188 (fax)

Brian Kangas Foulk
 Engineers • Surveyors • Planners

Drawing Number:
EXHIBIT A
C-5
5 9 20

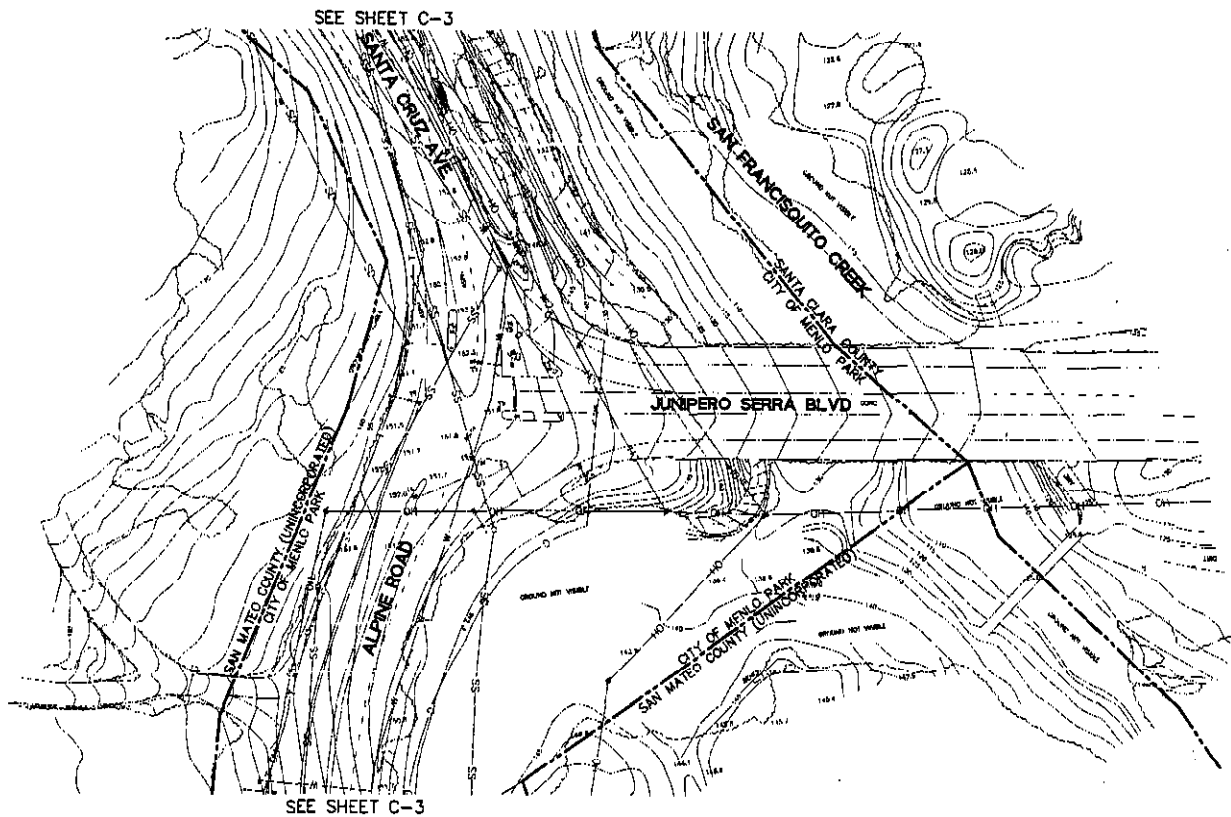


NOTE:
 THE CITY AND COUNTY LIMIT LINES SHOWN ARE SCHEMATIC
 IN NATURE AND HAVE NOT BEEN COMPILED FROM RECORD
 DATA SOURCES.

Date: 07/23/02	No.:	Revisions:
Scale: 1"=40'	1.	ADJUSTMENTS AND IMPROVEMENTS
Drawn:	2.	REVISIONS TO 07/23/02
Approved: [Signature]		
Job No. 02-001-01		

SAND HILL RD IMPROVEMENT PROJECTS
SAND HILL ROAD
EXISTING SITE CONDITIONS
 MENLO PARK - SAN MATEO COUNTY CALIFORNIA

Brian Kangas Foulk
 Engineers • Surveyors • Planners
 881 RIDGER PARK DRIVE
 SUITE 100
 SAN JOSE, CA 95131
 408/487-9199 (FAX)



SEE SHEET C-3

SEE SHEET C-3



NOTE:
THE CITY AND COUNTY LIMIT LINES SHOWN ARE SCHEMATIC IN NATURE AND HAVE NOT BEEN COMPILED FROM RECORD DATA SOURCES.

981 RIDGER PARK D
SUITE 100
SAN JOSE, CA 95131
408/487-8180 (PA)

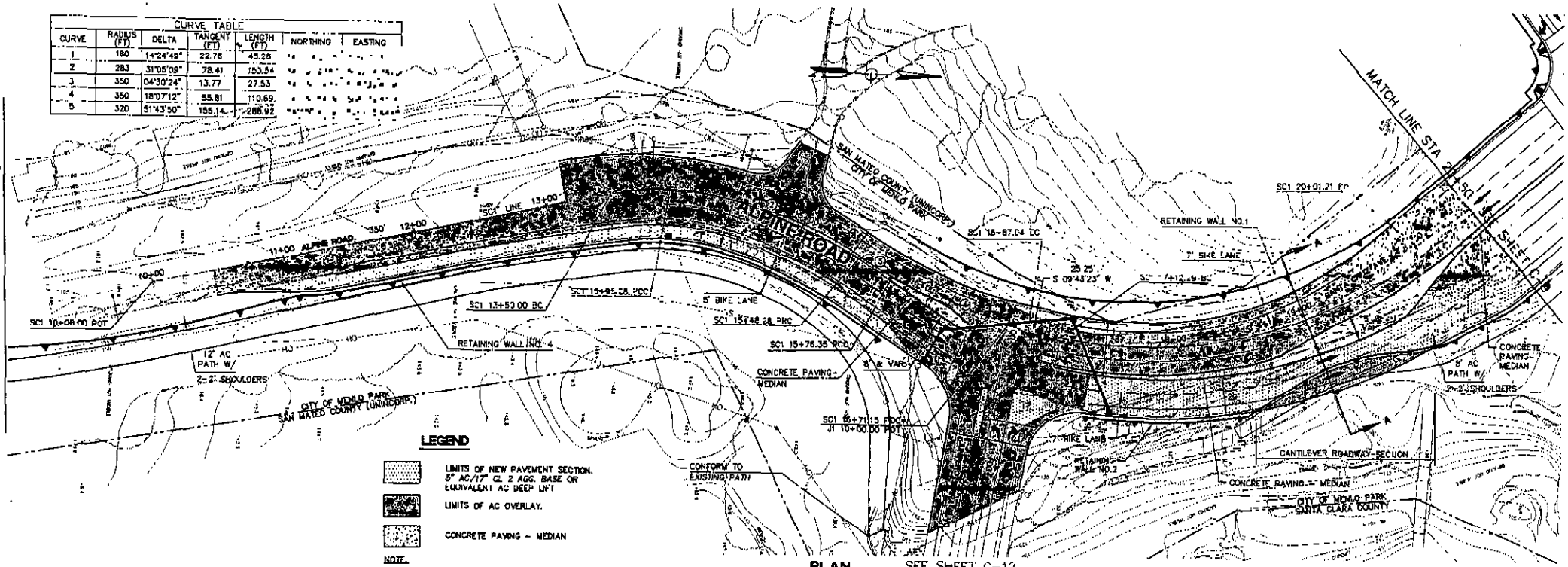
Brian Kaugas Fouk
Engineers • Surveyors • Planners

SAND HILL RD IMPROVEMENT PROJECTS
JUNIPERO SERRA BOULEVARD
EXISTING SITE CONDITIONS
SAN MATEO COUNTY CALIFORNIA
MENLO PARK

No.	Revisions
1	ISSUED FOR PERMITS
2	REVISED PER COMMENTS

Date: 07/19/02
Drawing Number:
EXHIBIT A
C-7
7 of 20

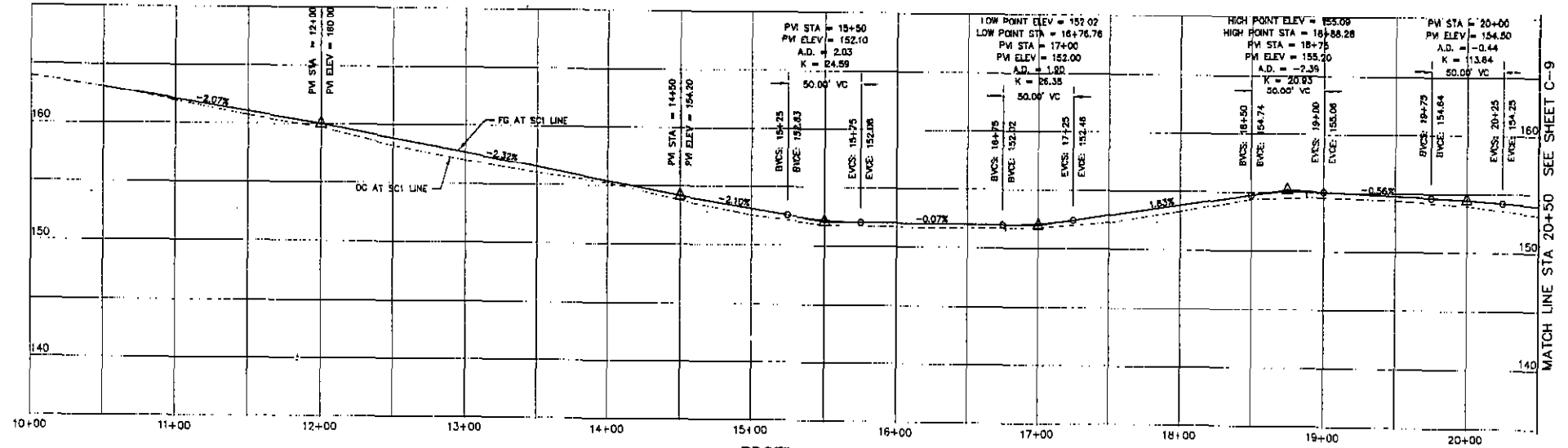
CURVE TABLE					
CURVE	RADIUS (FT)	DELTA	TANGENT (FT)	LENGTH (FT)	
1	180	14°24'48"	22.76	45.26	
2	283	31°05'09"	78.41	153.54	
3	350	04°30'24"	13.77	27.53	
4	350	18°07'12"	55.81	110.69	
5	320	51°43'50"	155.14	288.92	



- LEGEND**
- LIMITS OF NEW PAVEMENT SECTION. 5" AC/17" CL 2 AGG. BASE OR EQUIVALENT AC DEEP LIFT
 - LIMITS OF AC OVERLAY.
 - CONCRETE PAVING - MEDIAN

NOTE:
THE CITY AND COUNTY LIMIT LINES SHOWN ARE SCHEMATIC IN NATURE AND HAVE NOT BEEN COMPILED FROM RECORD DATA SOURCES.

PLAN
SCALE: 1"=40'
SEE SHEET C-12



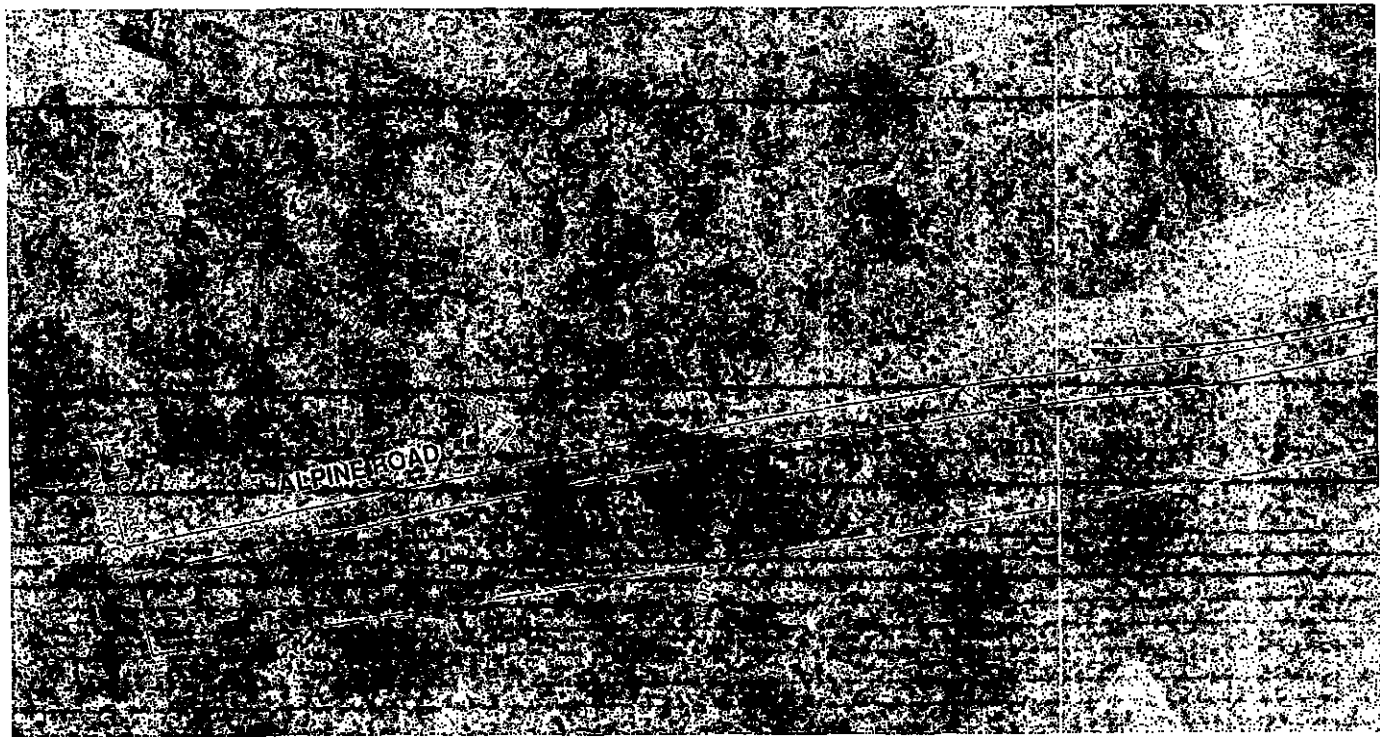
PROFILE
SCALE: HORIZ 1"=40'
VERT 1"=5'

981 BODDEN PARK DRIVE
SAN JOSE, CA 95131
SAN JOSE, CA 95131
408/467-8196 (FAX)

Brian Kangas Foulk
Engineers • Surveyors • Planners

SAND HILL RD IMPROVEMENT PROJECTS
SANTA CRUZ AVENUE
PLAN AND PROFILE
SAN MATEO COUNTY
MENLO PARK
CALIFORNIA

Date: 07/16/02	Scale: 1"=40'	Design: [Signature]	Approved: [Signature]
Drawing Number: EXHIBIT A			
C-8			
8 20			



SEE SHEET C-8

NOTE:
THE CITY AND COUNTY LIMIT LINES SHOWN ARE SCHEMATIC
IN NATURE AND HAVE NOT BEEN COMPILED FROM RECORD
DATA SOURCES.

PLAN
SCALE: 1"=40'

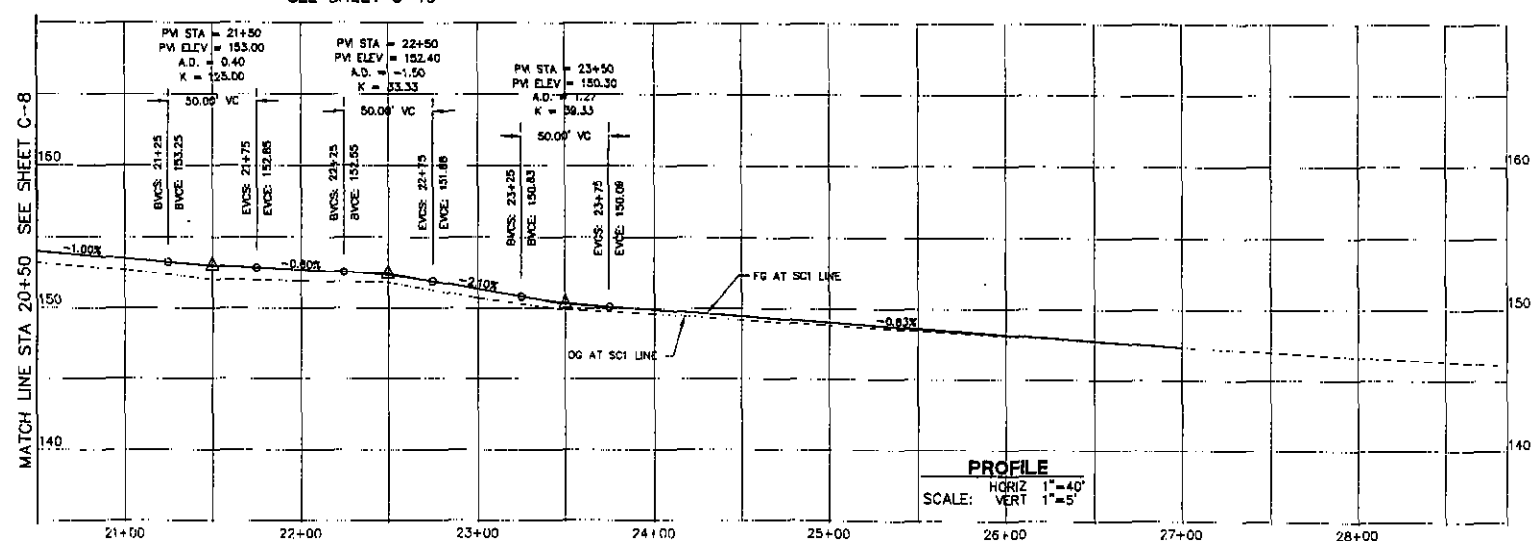
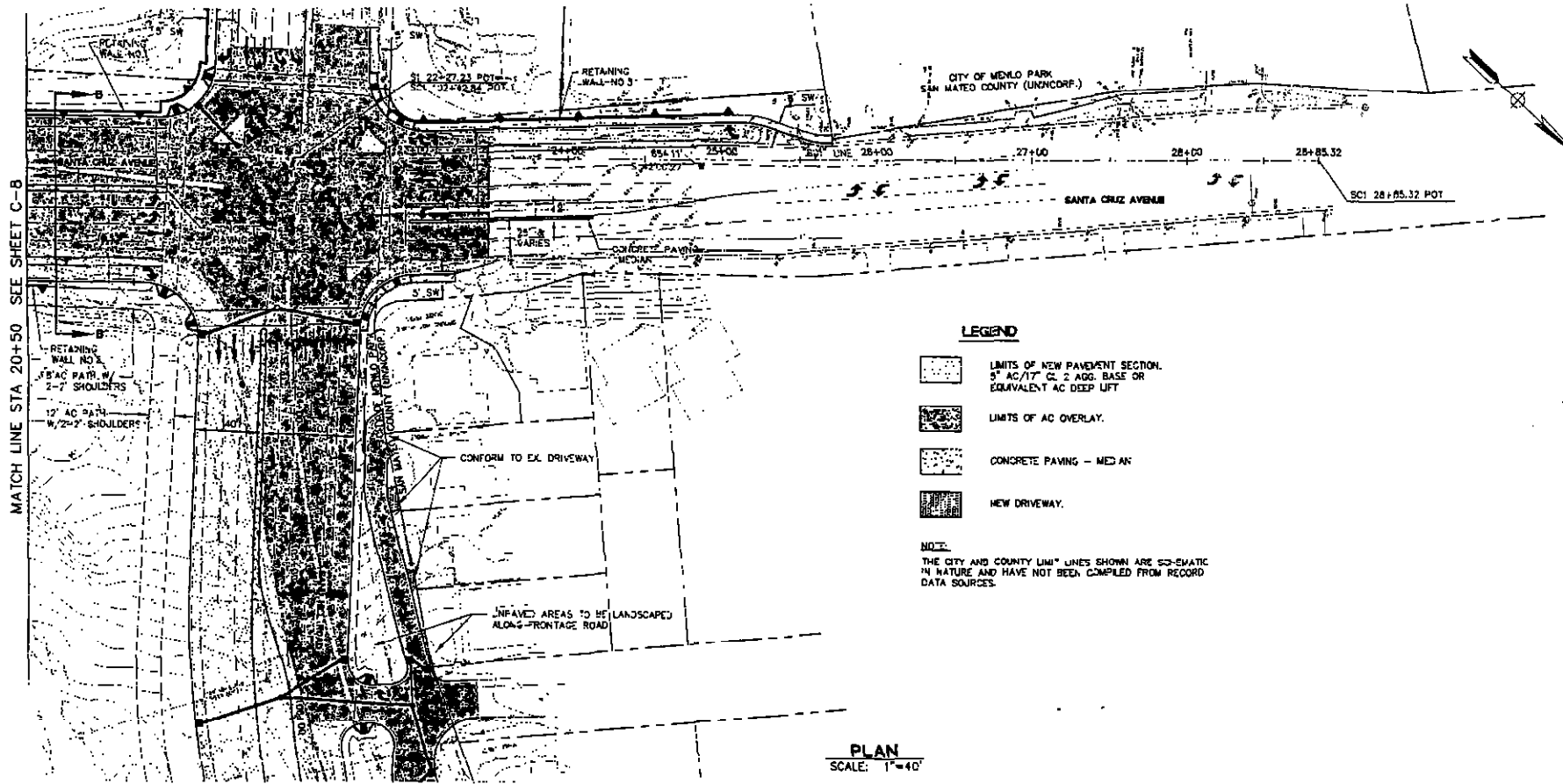
Date: 07/15/02	No.	Revisions
Scale: 1"=40'	1	ADDED TO THE PLAN
Drawn:	2	ADDED TO THE PLAN
Checked:		
Approved: HNS		
Job No: 020016		

Drawing Number:
EXHIBIT A
C-BA
BA 20

SAND HILL RD IMPROVEMENT PROJECTS
SANTA CRUZ AVENUE
PLAN AND PROFILE
SANTA CRUZ COUNTY CALIFORNIA
VENLO PARK

881 BENDER PARK DRIVE
SAN JOSE, CA 95131
408/487-9100
408/487-9189 (FAX)

Brian Kangas Foulk
Engineers • Surveyors • Planners



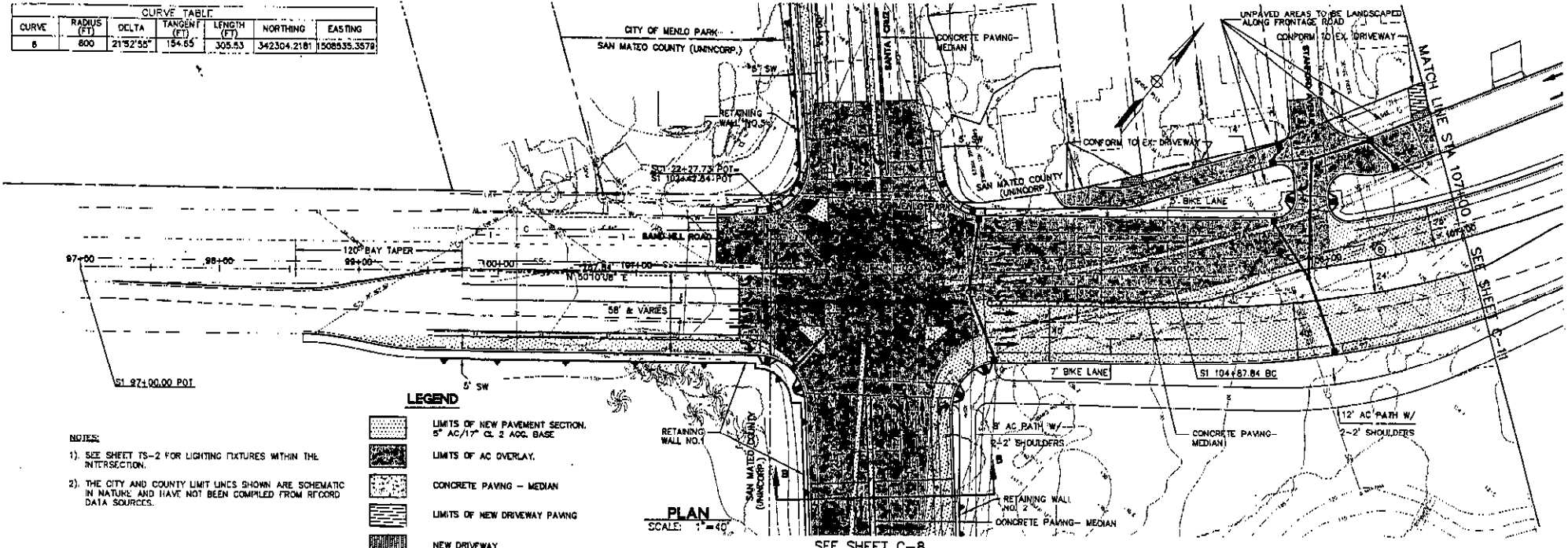
SAND HILL RD IMPROVEMENT PROJECTS
SANTA CRUZ AVENUE
PLAN AND PROFILE

SAN MATEO COUNTY CALIFORNIA
MENLO PARK

Brian Kangas Foulk
Engineers • Surveyors • Planners

Date: 07/15/00	No.:	Revision:	1. PREPARED FOR SAND HILL ROAD IMPROVEMENT PROJECT 2. PREPARED FOR SAND HILL ROAD IMPROVEMENT PROJECT
Scale: 1"=40'	Sheet: 1 of 2	Drawn: [Signature]	Checked: [Signature]
Drawing Number:		Approved: [Signature]	
EXHIBIT A			
C-9			
9 of 20			

CURVE TABLE						
CURVE	RADIUS (FT)	DELTA	TANGENT (FT)	LENGTH (FT)	NORTHING	EASTING
8	800	21°32'55"	154.65	305.53	342304.2181	1508935.3578



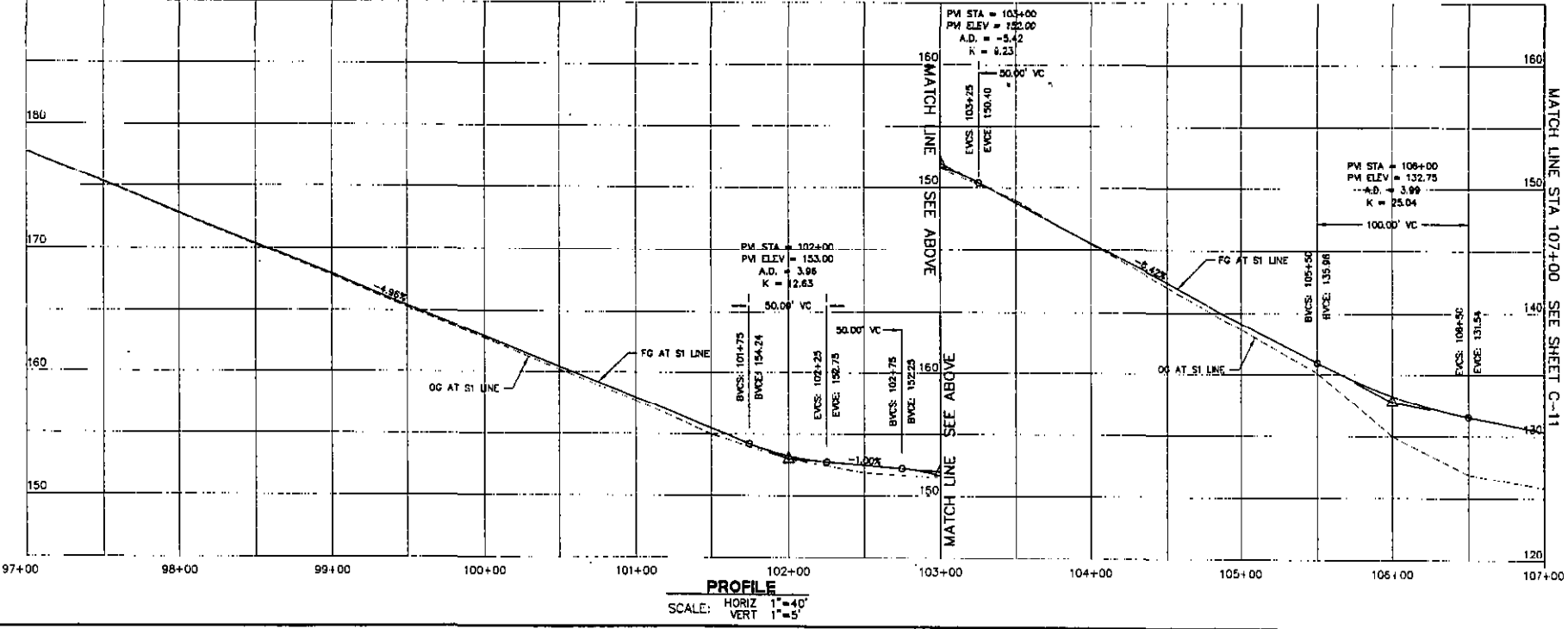
- NOTES:**
- SEE SHEET TS-2 FOR LIGHTING FIXTURES WITHIN THE INTERSECTION.
 - THE CITY AND COUNTY LIMIT LINES SHOWN ARE SCHEMATIC IN NATURE, AND HAVE NOT BEEN COMPILED FROM RTICORD DATA SOURCES.

LEGEND

- LIMITS OF NEW PAVEMENT SECTION. 5" AC/17" CL. 2 AGG. BASE
- LIMITS OF AC OVERLAY.
- CONCRETE PAVING - MEDIAN
- LIMITS OF NEW DRIVEWAY PAVING
- NEW DRIVEWAY.

PLAN
SCALE: 1" = 40'

SEE SHEET C-8



PROFILE
SCALE: HORIZ 1" = 40'
VERT 1" = 5'

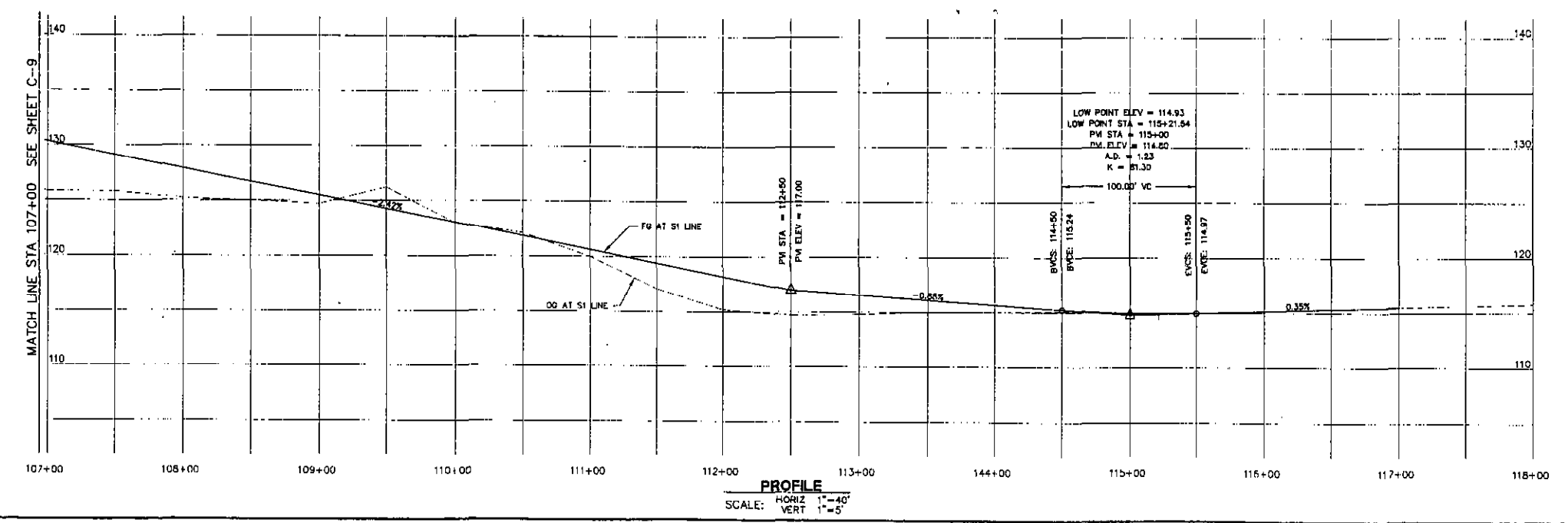
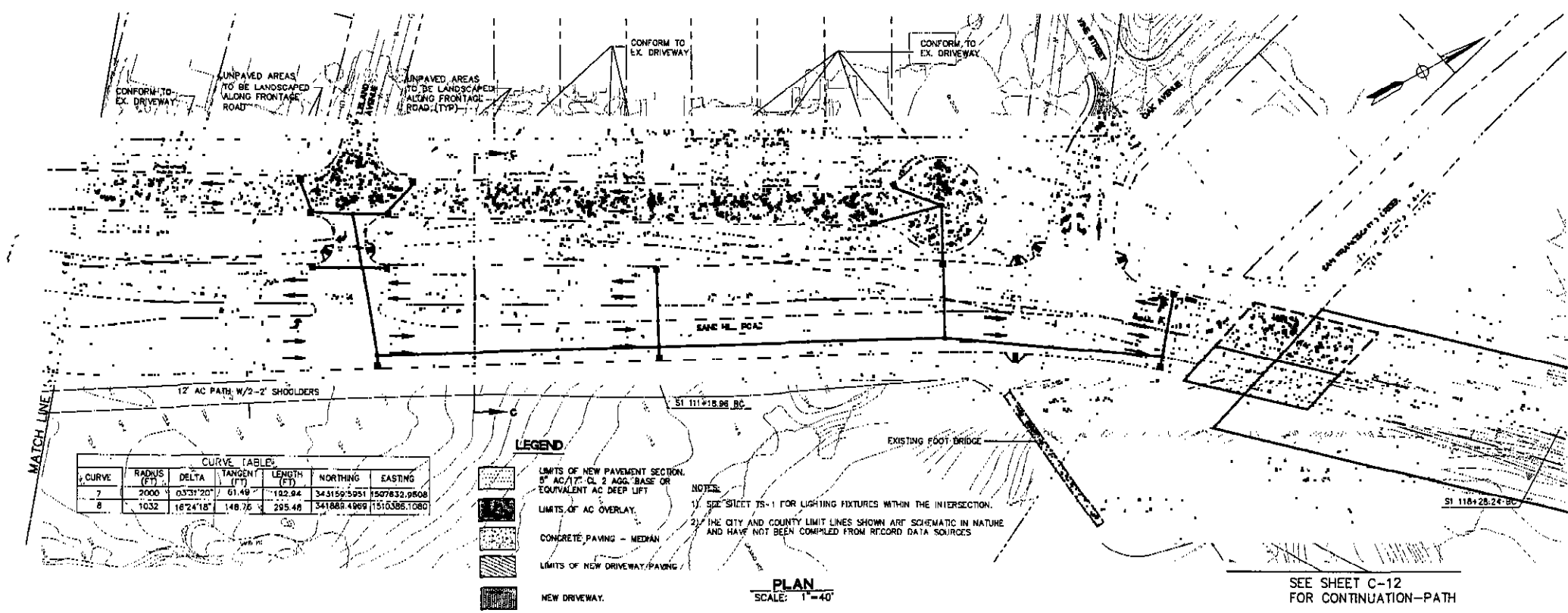
SAND HILL RD IMPROVEMENT PROJECTS
SAND HILL ROAD
PLAN AND PROFILE
SAN MATEO COUNTY
MENLO PARK

Brian Kangas Fouk
Engineers • Surveyors • Planners

CALIFORNIA

Drawn	Checked	Reviewed
Scale: 1" = 40'	Scale: 1" = 5'	Scale: 1" = 5'
Drawn: DAC	Checked: DAC	Reviewed: DAC
Approved: DAC	Approved: DAC	Approved: DAC
Job No. 0715102	No. 1	Date: 07/15/02
1. SAND HILL ROAD IMPROVEMENT PROJECTS 2. SAND HILL ROAD IMPROVEMENT PROJECTS		

EXHIBIT A
C-10
10 9 **20**



901 RIDGER PARK DRIVE
SUITE 100
SAN MATEO, CA 94031
415/442-9100
415/442-9198 (FAX)

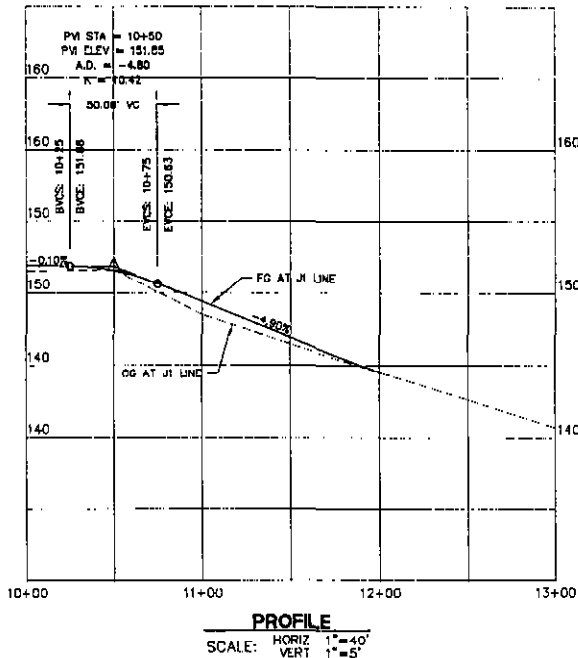
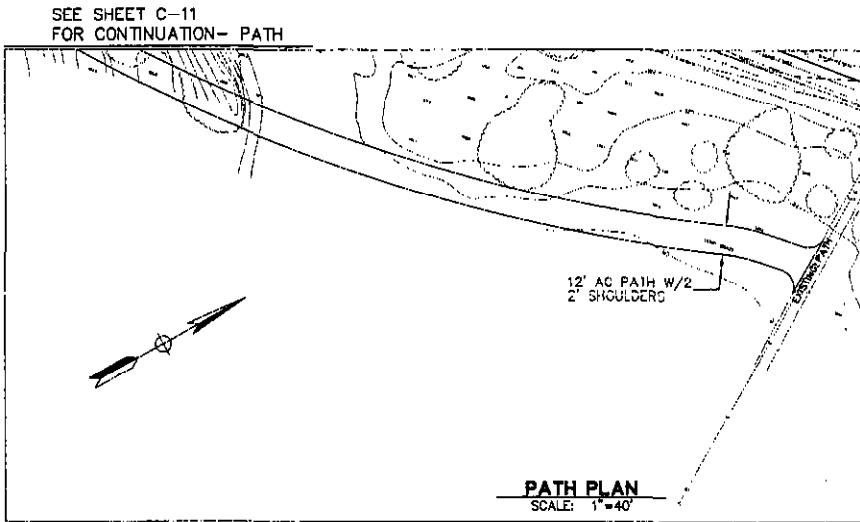
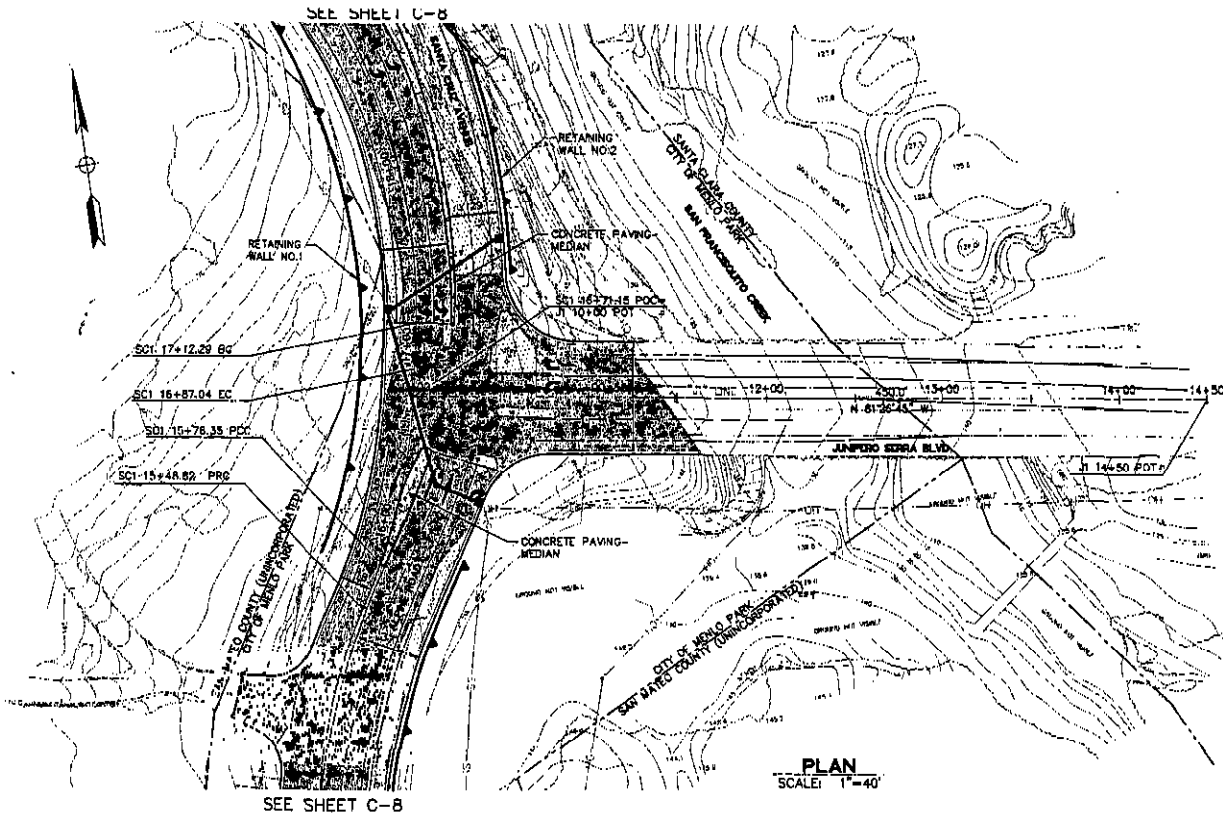
Brian Kangas Fouk
Engineers • Surveyors • Planners

SAND HILL RD IMPROVEMENT PROJECTS
SAND HILL ROAD
PLAN AND PROFILE
SAN MATEO COUNTY

CALIFORNIA
MENLO PARK

Date	07/19/02	No.	1	Revisions
Scale	1"=40'			1. APPROVED FOR COUNTY RECORDS
Drawn			2.	2. CHECKED FOR CONFORMANCE WITH COUNTY RECORDS
Checked			3.	3. CHECKED FOR CONFORMANCE WITH COUNTY RECORDS
Approval				
Use the reverse side				

Drawing Number:
EXHIBIT A
C-11
11 of 20



LEGEND

- LIMITS OF NEW PAVEMENT SECTION. 5" AC/17" CL 2 AGG. BASE OR EQUIVALENT AC DEEP LIFT
- LIMITS OF AC OVERLAY.
- CONCRETE PAVING - MEDIAN

NOTE:
 THE CITY AND COUNTY LIMIT LINES SHOWN ARE SCHEMATIC IN NATURE AND HAVE NOT BEEN COMPILED FROM RECORD DATA SOURCES.

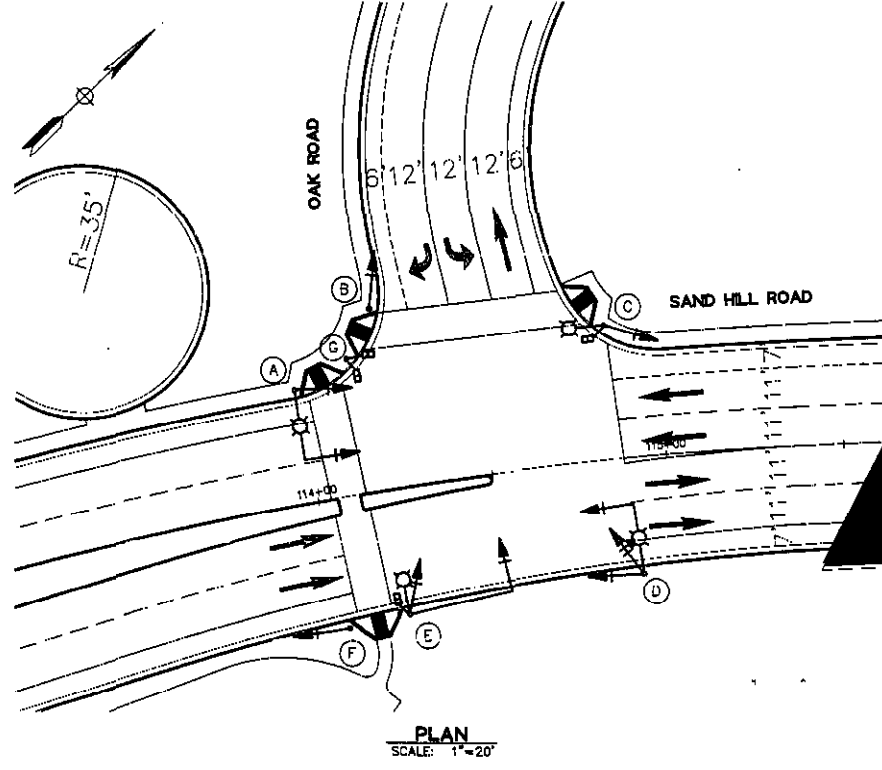
981 BRONX PARK DRIVE
 SUITE 100
 SAN JOSE, CA 95131
 408/467-9100
 408/467-9199 (FAX)

Brian Kangas Fouk
 Engineers • Surveyors • Planners

SAND HILL RD IMPROVEMENT PROJECTS
JUNIPERO SERRA BOULEVARD
PLAN AND PROFILE
 SAN MATEO COUNTY CALIFORNIA
 MENLO PARK

Project No.	1
Date	07/15/2011
Scale	1"=40'
Design	DRG
Approval	RAS
Job No.	1000000000

Owning Number:
EXHIBIT A
C-12
 12 of 20



PLAN
SCALE: 1"=20'

POLE AND EQUIPMENT SCHEDULE

NO.	STANDARD		VEH SIG MTG		PED SIGNAL	COMMENTS
	TYPE	SIG M.A.	LUM M.A.	MAST ARM		
(A)	17-2-70	20'	12'	MAS	SV-1-T	
(B)	1-B				TV-1-T	
(C)	15		12'		SV-1-T	SP-1-T
(D)	17-2-70	20'	12'	MAS	SV-2-TA	
(E)	19-2-70	30'	12'	MAS	SV-1-T	SP-1-T
(F)	1-B				TV-1-T	
(G)	1-B					TP-2-T

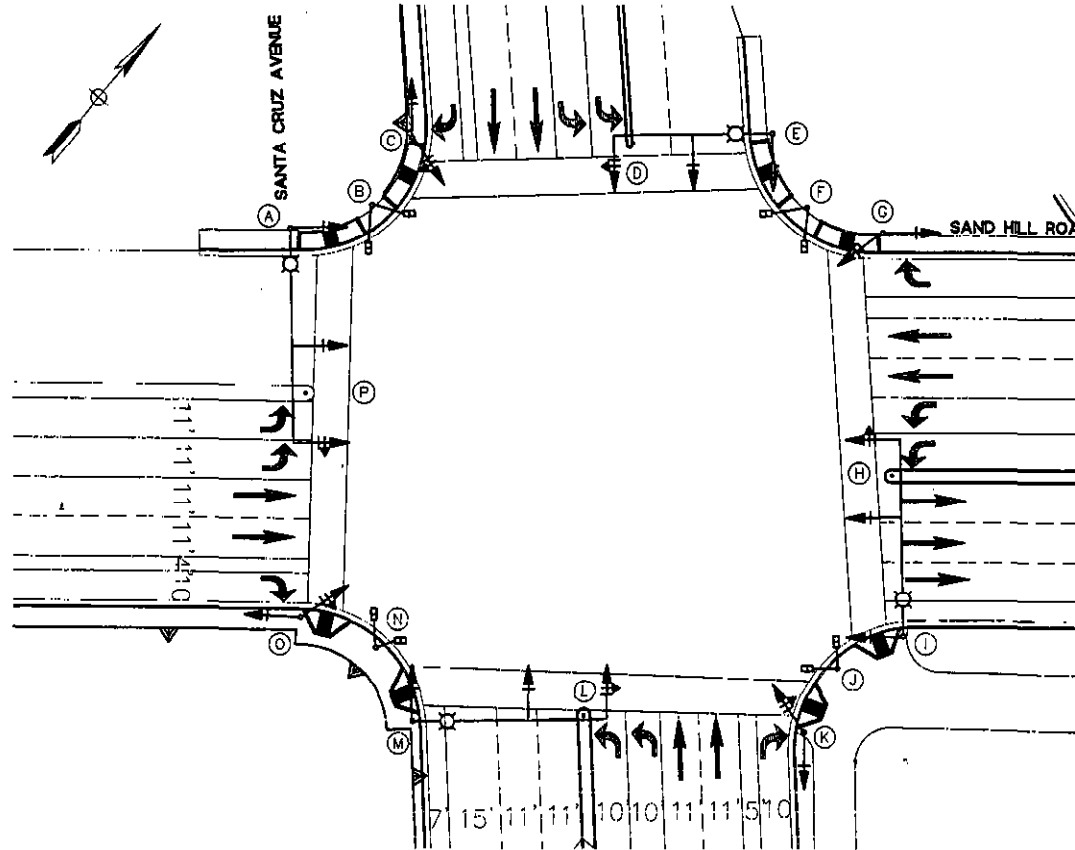
9611 RIDDER PARK DRIVE
SAN JOSE, CA 95131
SAN JOSE, CA 95131
408/467-9100
408/467-9199 (FAX)

Brian Kangas Fouk
Engineers • Surveyors • Planners

SAND HILL RD IMPROVEMENT PROJECTS
SAND HILL ROAD
TRAFFIC SIGNAL PLAN
SAN MATEO COUNTY CALIFORNIA
MENLO PARK

Date: 07/05/02	Rev:	Rev:	Rev:
Scale: 1"=20'	Change:	OK	OK
Checked:	Design:	Drawn:	Approved:
Checked:	Design:	Drawn:	Approved:
Checked:	Design:	Drawn:	Approved:
Checked:	Design:	Drawn:	Approved:
Checked:	Design:	Drawn:	Approved:

Drawing Number:
EXHIBIT A
TS-1
13 OF 20



PLAN
SCALE: 1"=20'

POLE AND EQUIPMENT SCHEDULE

NO.	STANDARD		VEH SIG MTG		PED SIGNAL	COMMENTS
	TYPE	SIG M.A.	LUM M.A.	MAST ARM	POLE	
(A)	60-5-129	60'	12'	MAS/MAS	SV-1-T	
(B)	1-B					TP-2-T
(C)	1-B				TV-2-T	
(D)	PPB					
(E)	26-4-80	45'	12'	MAS/MAS	SV-1-T	
(F)	1-B					TP-2-T
(G)	1-B				TV-2-T	
(H)	PPB					
(I)	29-5-80	55'	12'		SV-1-T	
(L)	1-B					TP-2-T
(K)	1-B				TV-2-T	
(M)	PPB					
(N)	29-5-80	55'	12'		SV-1-T	
(O)	1-B					TP-2-T
(P)	1-B				TV-2-T	
(Q)	PPB					

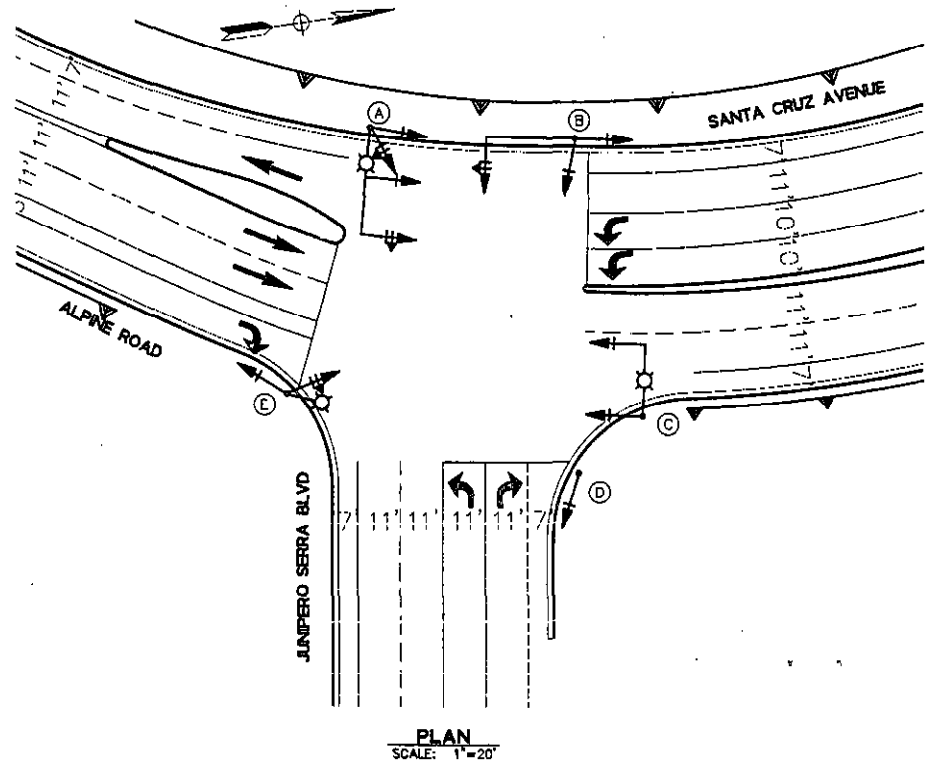
Brian Kangas Foulk
Engineers • Surveyors • Planners

881 RIDDER PARK DRIVE
SUITE 100
SAN MATEO, CA 94401
415/487-9100
415/487-9189 (FAX)

SAND HILL RD IMPROVEMENT PROJECTS
SAND HILL ROAD
TRAFFIC SIGNAL PLAN

SAN MATEO COUNTY
VENLO PARK
CALIFORNIA

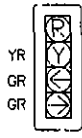
Date: 07/13/02 Scale: 1"=20' Author: [blank] Designer: [blank] Checker: [blank] Approver: [blank]	No.: 1 Revision: [blank]
Drawing Number: EXHIBIT A TS-2 14 of 20	Job No: [blank]



PLAN
SCALE: 1"=20'

POLE AND EQUIPMENT SCHEDULE

NO.	STANDARD		VEH SIG MTG		PED SIGNAL	COMMENTS
	TYPE	SIG M.A.	UM M.A.	MAST ARM		
(A)	19-3-70	30'	12'	MAS/MAS	SV-2-TA	
(B)	18-2-70	25'		MAS*	SV-2-TA	*SEE DETAIL A
(C)	17-2-70	20'	12'	MAS	SV-1-T	
(D)	1-B				TV-1-T	
(E)	15		12'		SV-2-TA	



DETAIL A

601 DODGE PARK DRIVE
SUITE 1100
SAN JOSE, CA 95131
408/487-9100
408/487-8998 (FAX)

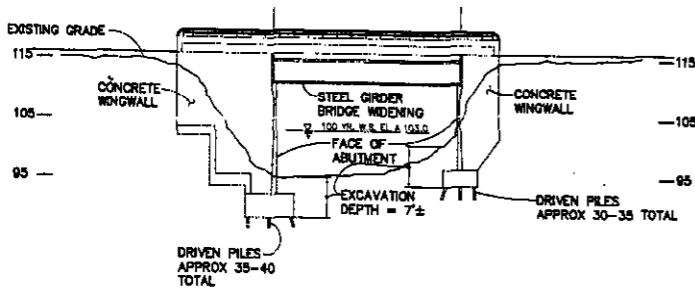
Brian Kangas Fouk
Engineers • Surveyors • Planners

SAND HILL RD IMPROVEMENT PROJECTS
SAND HILL ROAD
TRAFFIC SIGNAL PLAN
SAN MATEO COUNTY CALIFORNIA

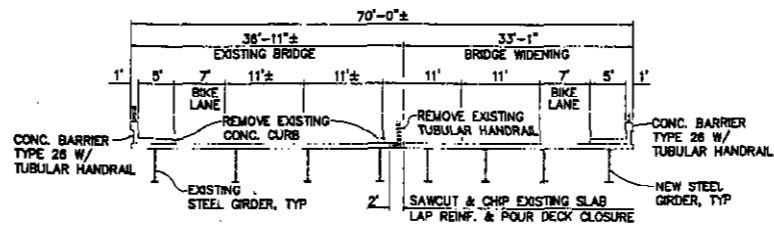
MENLO PARK

Date: 07/25/02	No.	1
Scale: 1"=20'	Design: JF	2
Drawn: JF	Check: JF	2
Approved: BKS	Job No. 0209-02	

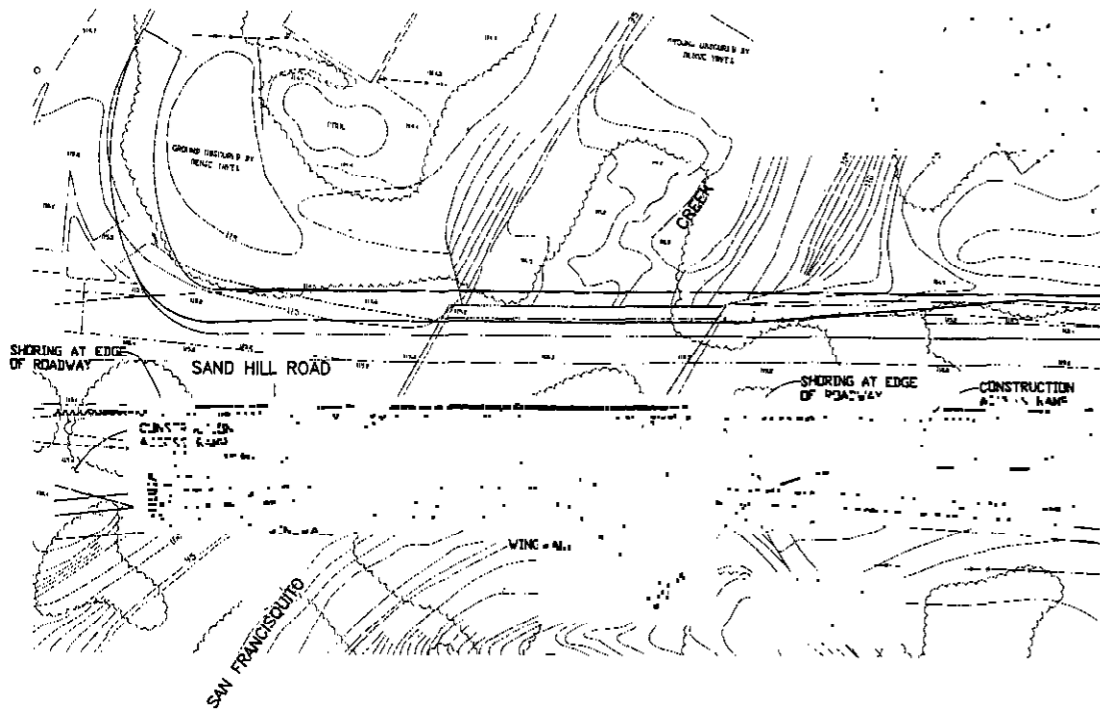
Drawing Number:
EXHIBIT A
TS-3
15 of 20



ELEVATION
1" = 30'-0" HORIZ.
1" = 10'-0" VERT.



TYPICAL BRIDGE SECTION
1/8" = 1'-0"

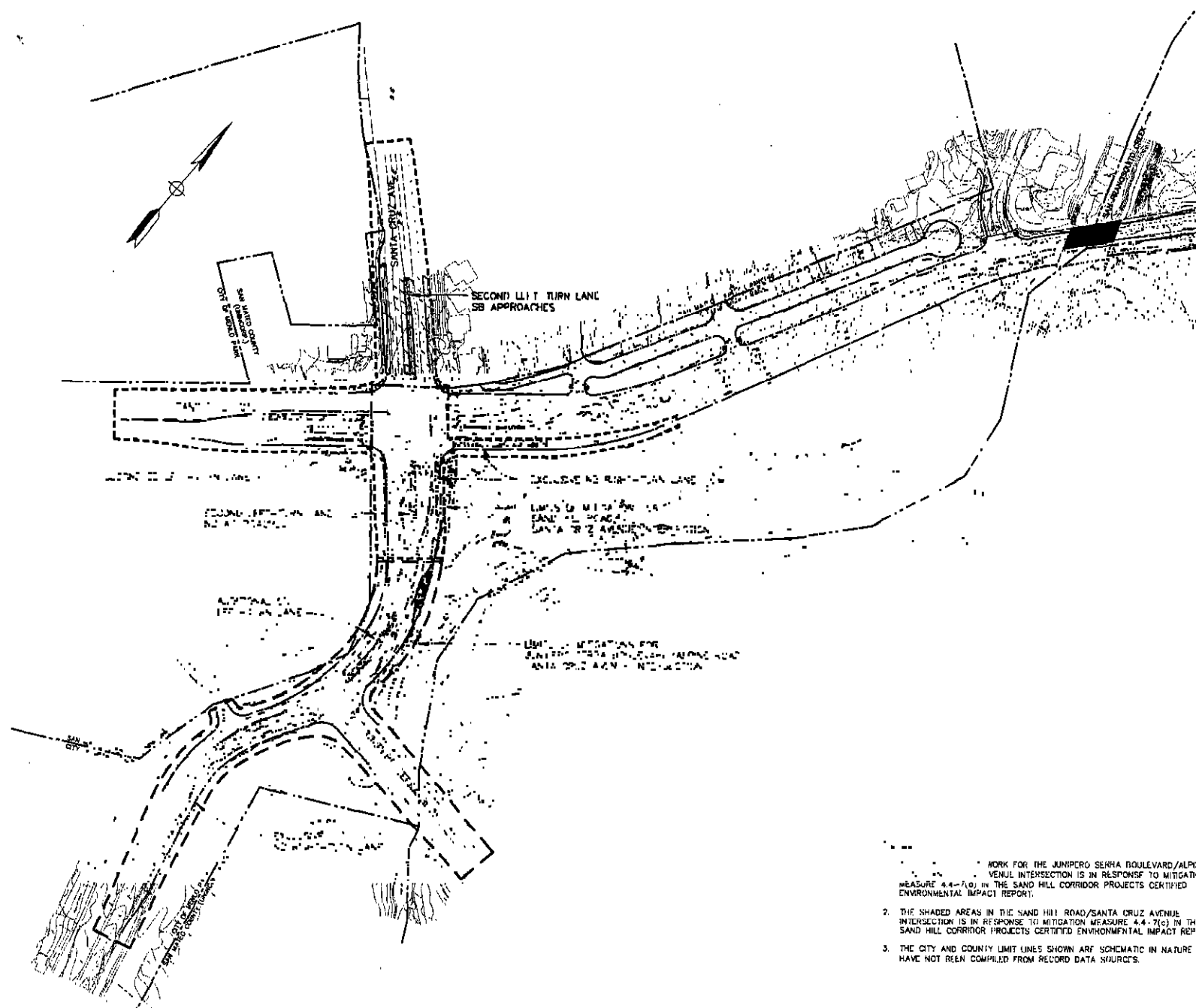


PLAN
1" = 20'

SEE SHEET PAGE 1
FOR DATE OF ISSUE
AND SCALE

Brian Kangas Faulk
CONSULTING ENGINEERS

GENERAL PLAN	
SAND HILL ROAD BRIDGE AT SAN FRANCISCO CREEK PALO ALTO CALIFORNIA	
DATE: 07/2015	SCALE: 1" = 20'
PROJECT NO.:	15-00000000
DATE:	07/2015
BY:	BAF
CHECKED BY:	BAF
APPROVED BY:	BAF
DATE:	07/2015
SCALE:	1" = 20'



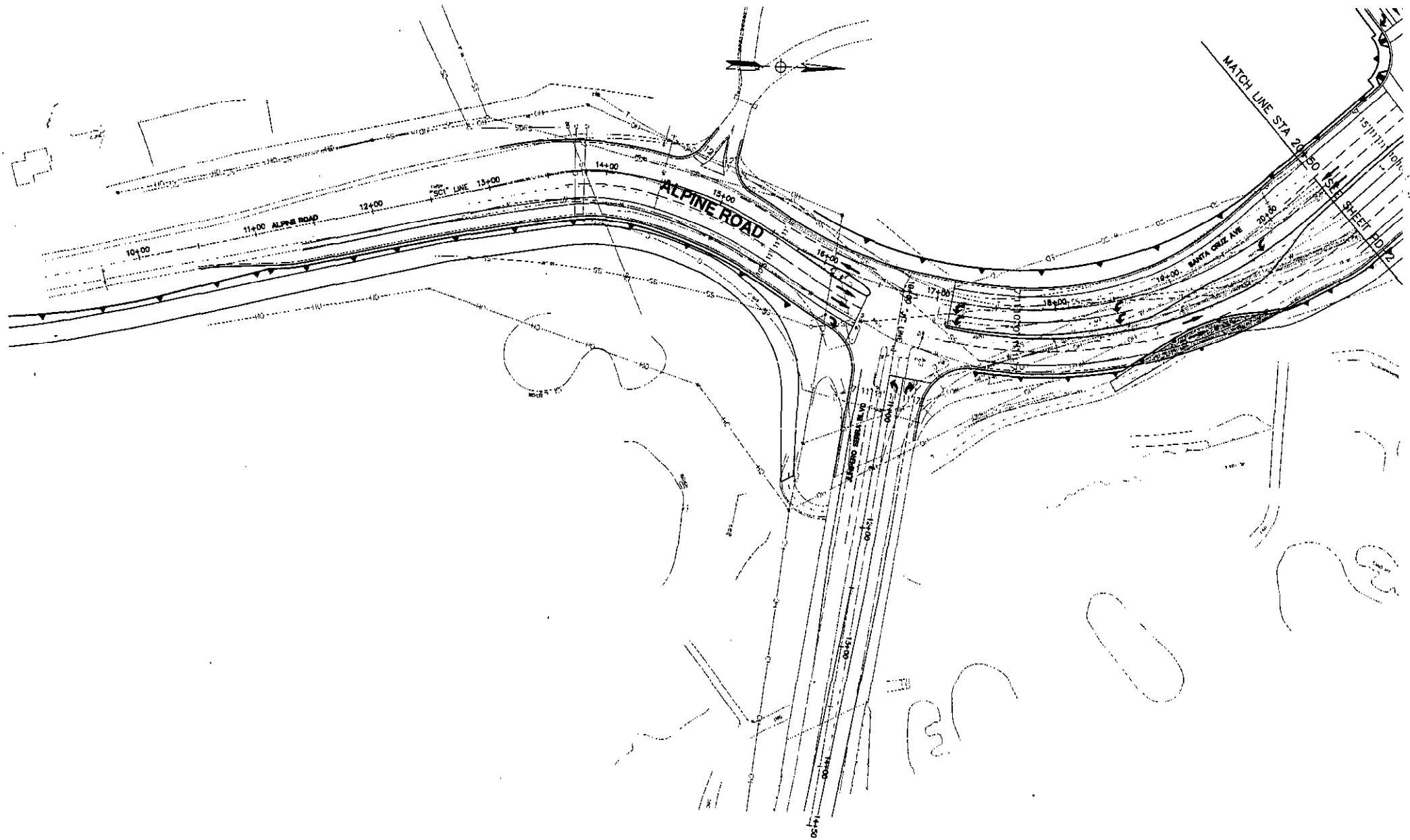
- WORK FOR THE JUNIPERO SERRA BOULEVARD/ALPINE VENTURA INTERSECTION IS IN RESPONSE TO MITIGATION MEASURE 4.4-7(d) IN THE SAND HILL CORRIDOR PROJECTS CERTIFIED ENVIRONMENTAL IMPACT REPORT.
- THE SHADED AREAS IN THE SAND HILL ROAD/SANTA CRUZ AVENUE INTERSECTION IS IN RESPONSE TO MITIGATION MEASURE 4.4-7(e) IN THE SAND HILL CORRIDOR PROJECTS CERTIFIED ENVIRONMENTAL IMPACT REPORT.
 - THE CITY AND COUNTY LIMIT LINES SHOWN ARE SCHEMATIC IN NATURE AND HAVE NOT BEEN COMPILED FROM RECORD DATA SOURCES.

681 REDWOOD PARK DRIVE
SUITE 100
SAN JOSE, CA 95131
408/487-9100
408/487-9198 (FAX)

Brian Kangas Fouk
Engineers • Surveyors • Planners

**SAND HILL ROAD IMPROVEMENTS
LIMITS OF INTERSECTION MITIGATIONS
AND CITY LIMIT LINES**
MENLO PARK / PALO ALTO
CALIFORNIA

Date: 07/15/02 Scale: 1"=100' Drawing: 17 Drawing Number: EXHIBIT A M-1 17 of 20	No. 1 Description: SAND HILL ROAD IMPROVEMENTS AND INTERSECTION MITIGATIONS Date: 07/15/02 Drawn: [Signature] Checked: [Signature] Approved: [Signature]
---	---



PLAN
SCALE: 1"=40'

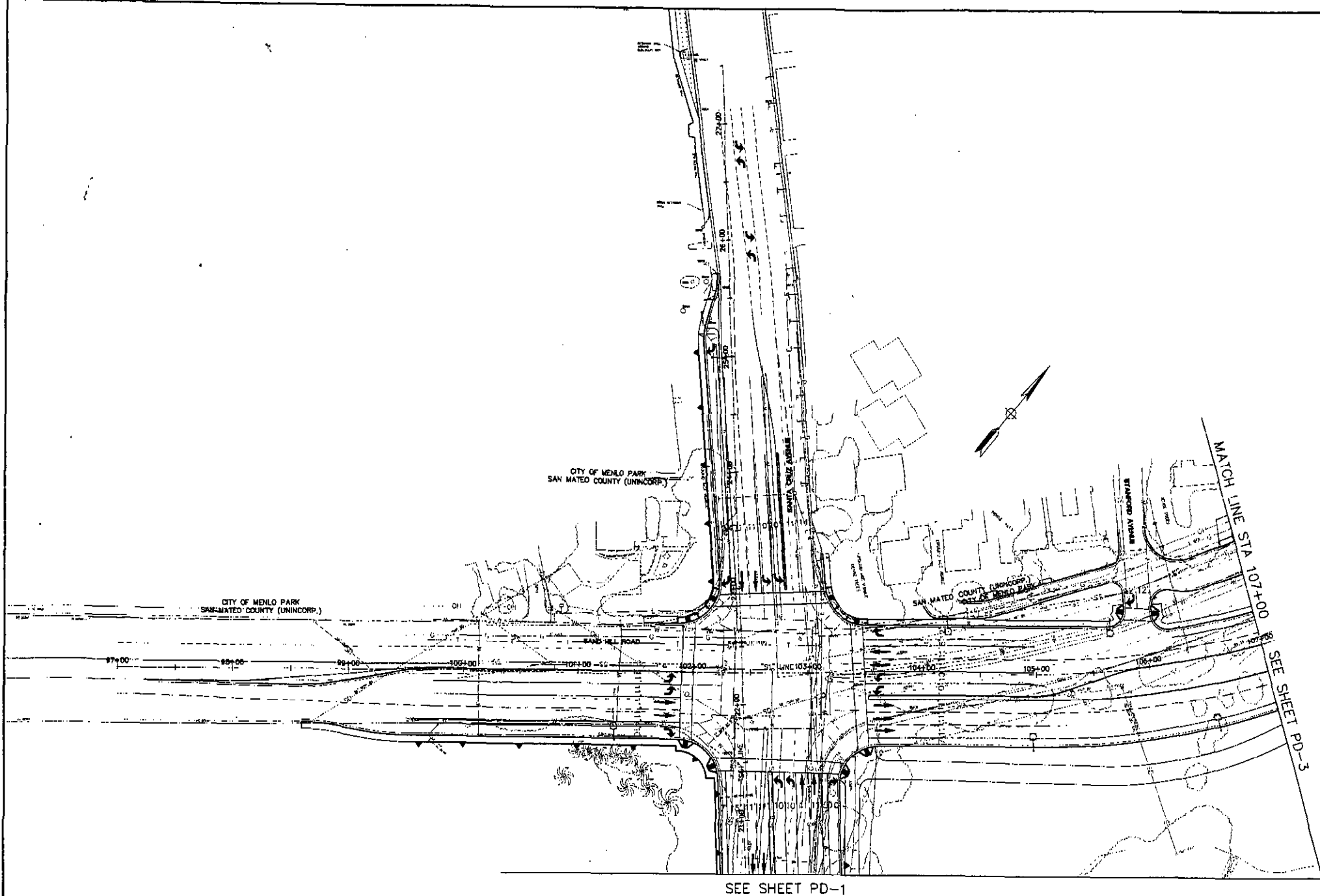
Sheet No.	07/25/02	Project No.	
Scale	1"=40'	Contract No.	
Design	JR	Client	
Drawn		Project Name	
Approved		Project Location	
Job No.			

EXHIBIT A
PD-1
18 9 20

SAND HILL RD IMPROVEMENT PROJECTS
SANTA CRUZ AVENUE
ROADWAY GEOMETRICS
SAN MATEO COUNTY
CALIFORNIA
MEDIC PARK

588 PROSPECT PARK DRIVE
SAN JOSE, CA 95131
408/487-9100
408/487-9105 (FAX)

Brian Kangas Fouk
Engineers • Surveyors • Planners



SEE SHEET PD-1

PLAN
SCALE: 1"=40'

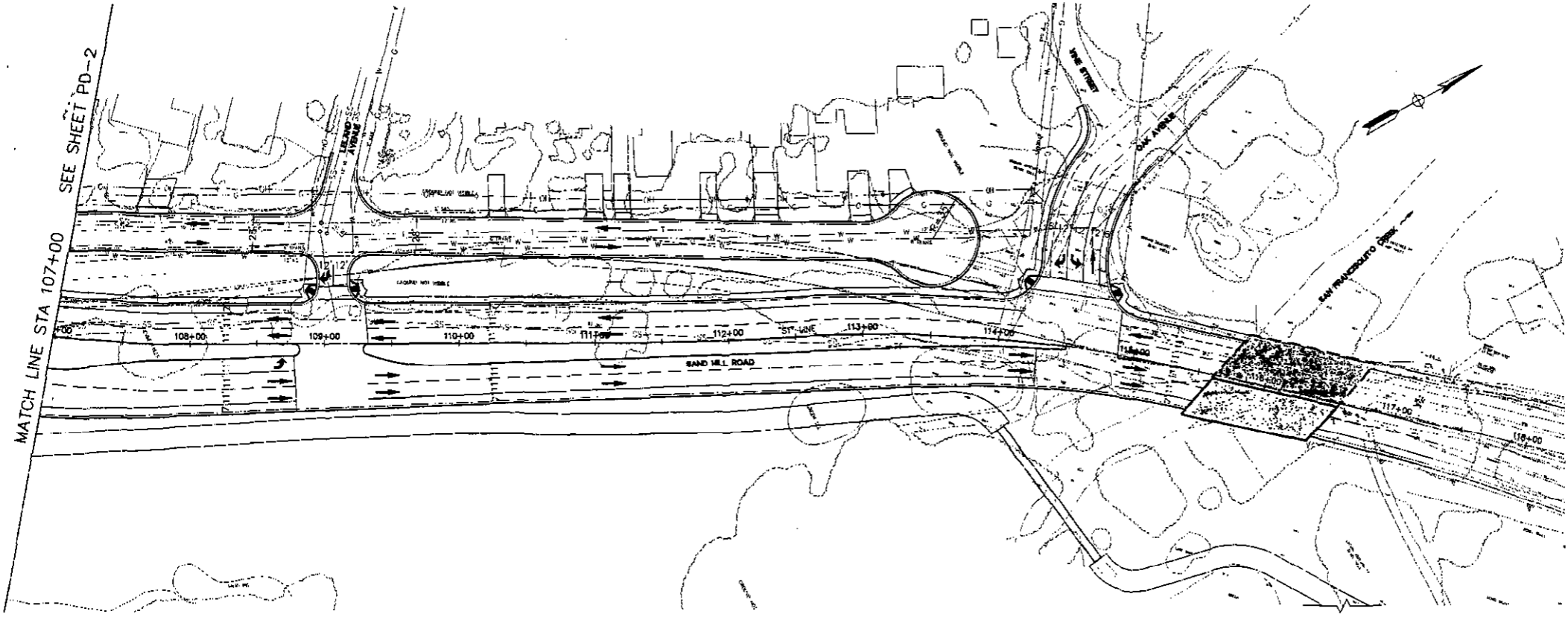
BRIAN KANGAS FOUK
SAN MATEO COUNTY
SAN MATEO COUNTY
408/487-9100
408/487-9195 (FAX)

Brian Kangas Fouk
Engineers • Surveyors • Planners

SAND HILL RD IMPROVEMENT PROJECTS
SAND HILL ROAD
ROADWAY GEOMETRICS
SAN MATEO COUNTY
CALIFORNIA
MENLO PARK

No.	Revisions
1	ADDITIONAL REVISIONS
2	REVISED PER COMMENTS
3	REVISED PER COMMENTS
4	REVISED PER COMMENTS
5	REVISED PER COMMENTS
6	REVISED PER COMMENTS
7	REVISED PER COMMENTS
8	REVISED PER COMMENTS
9	REVISED PER COMMENTS
10	REVISED PER COMMENTS

19
PD
20
EXHIBIT A



PLAN
SCALE: 1"=40'

Date: 07/13/02	No.:	Revisions:
Scale: 1"=40'	1	AS SHOWN
Design: JH	2	REVISIONS TO 07/13/02
Drawn:		
Approved: BAS		
Job No.:		

Drawing Number:
EXHIBIT A
PD-3
20 of 20

SAND HILL RD IMPROVEMENT PROJECTS
SAND HILL ROAD
ROADWAY GEOMETRICS
SAN MATEO CO., CA
MENLO PARK
CALIFORNIA

Brian Kangas Fouk
Engineers • Surveyors • Planners

981 RIDDER PARK DRIVE
SANTA CLARA, CA 95051
408/487-9100
408/487-9188 (FAX)