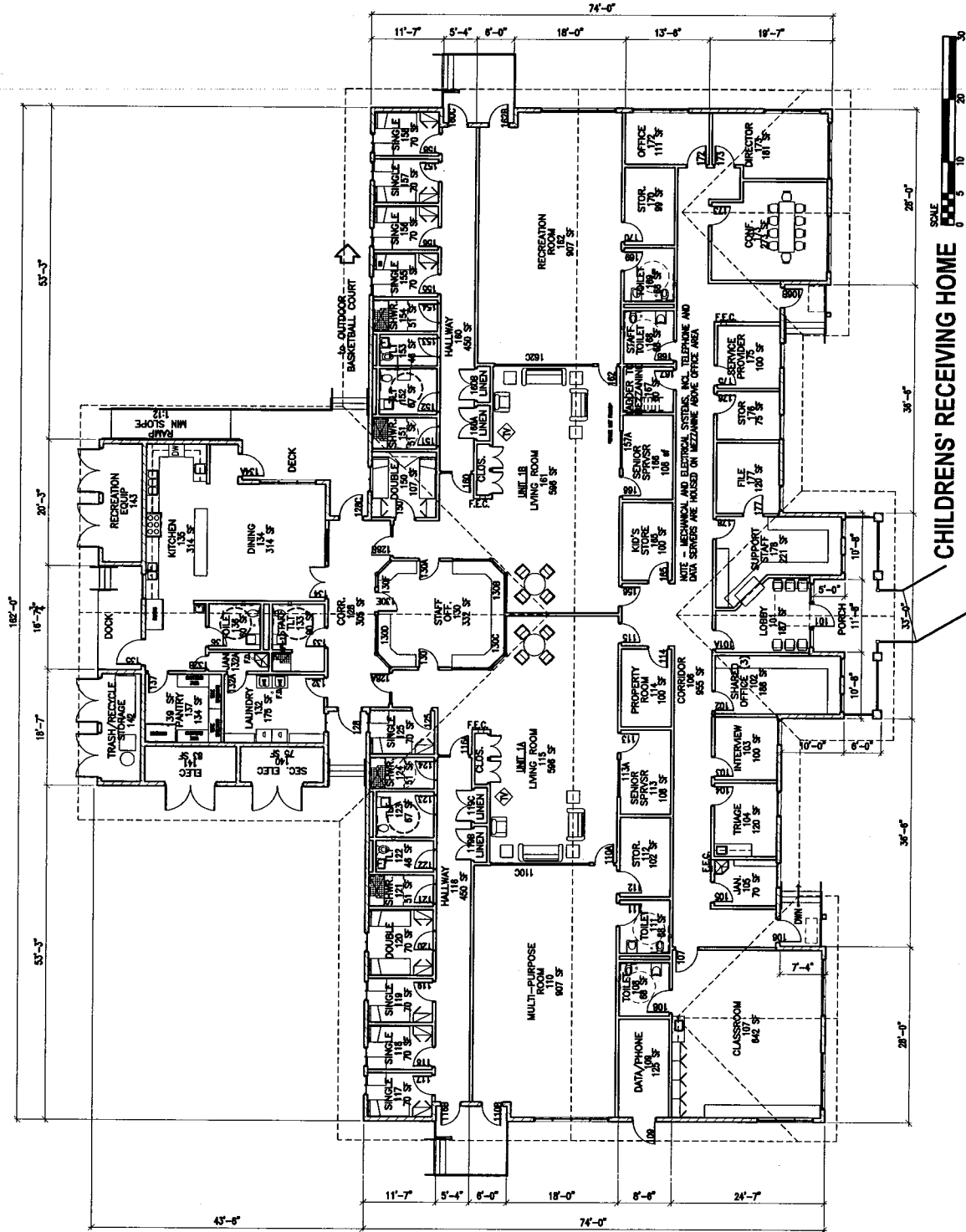


# Exhibit "A"



CHILDREN'S RECEIVING HOME  
 SAN MATEO COUNTY  
 PROPOSED PLAN REVISIONS  
 KMD ARCHITECTS 828-301 30 MARCH 2006





**SAN MATEO COUNTY  
YOUTH SERVICES CENTER**

**Program Review  
Appendix A - BOC Program**

Exhibit "A"

PRELIMINARY PROGRAM REVIEW FOR THE SAN MATEO YOUTH SERVICES CENTER JUVENILE HALL					
COMPONENT	PERSONS/ UNITS PER AREA	NO OF AREAS	SPACE STANDARD	NSF	COMMENTS
<b>16.000 GROUP (RECEIVING) HOME</b>					
<b>16.100 Receiving Home</b>					
<i>Intake</i>					
16.101 Entry Vestibule	1	1	100	100	
16.102 Property Room	1	1	100	100	
Subtotal NSF - Receiving Home Intake				200	
Departmental Grossing Factor				35%	70
Total DGSF - Receiving Home Intake				270	
<b>Receiving Home - Unit 1</b>					
<i>Unit 1a - 5 Youth</i>					
16.103 Sleeping - Single	1	3	70	210	
16.104 Sleeping - Double	2	1	50	100	
16.105 Living Room	1	1	200	200	
16.106 Bathroom / Shower	1	2	80	160	
16.107 Storage	1	1	50	50	
Subtotal - Unit 1a - 5 Youth				720	
<i>Unit 1b - 5 Youth</i>					
16.108 Sleeping - Single	1	3	70	210	
16.109 Sleeping - Double	2	1	50	100	
16.110 Living Room	1	1	200	200	
16.111 Bathroom / Shower	1	2	80	160	
16.112 Storage	1	1	50	50	
Subtotal - Unit 1b - 5 Youth				720	
<i>Unit 1c - 5 Youth</i>					
16.113 Sleeping - Single	1	3	70	210	
16.114 Sleeping - Double	1	2	50	100	
16.115 Living Room	1	1	200	200	
16.116 Bathroom / Shower	1	2	80	160	
16.117 Storage	1	1	50	50	
Subtotal - Unit 1c - 5 Youth				720	
<b>Unit 1 - Shared Spaces</b>					
16.118 Multipurpose	1	1	525	525	
16.119 Multipurpose - Restroom	1	1	45	45	
16.120 Staff Restroom	1	1	45	45	
16.121 Interview Room	1	1	100	100	
16.122 Storage	1	1	100	100	
16.123 Laundry	1	2	100	200	
16.124 Outdoor Recreation	15	1	225	3,375	Could be co-located w/Tower Recreation
16.125 Triage	1	1	120	120	
16.126 Janitor's Closet	1	1	40	40	
Subtotal - Unit 1 - Shared Spaces				1,175	Excluding Outdoor Recreation
Subtotal NSF - Receiving Home Unit 1				3,335	
Grossing Factor				55%	1,834
Total DGSF - Receiving Home Unit 1				5,169	
<b>Receiving Home - Support Core</b>					
<i>Programs</i>					
16.127 Rec Room	1	1	750	750	
16.128 Rec Room - Storage	1	1	50	50	
16.129 Outdoor Storage	1	1	100	100	
16.130 Family Restroom	1	1	45	45	
Subtotal NSF - Programs				945	
Departmental Grossing Factor				35%	331
Total DGSF - Programs				1,276	
<i>Food Service</i>					
16.131 Dining Room	1	1	375	375	
16.132 Kitchen	1	1	100	100	
Subtotal NSF - Food Service				475	
Departmental Grossing Factor				25%	119
Total DGSF - Food Service				594	
<i>Education</i>					
16.133 Classroom	1	1	600	600	
Subtotal NSF - Education				600	
Departmental Grossing Factor				25%	150
Total DGSF - Education				750	



**SAN MATEO COUNTY  
YOUTH SERVICES CENTER**

**Program Review  
Appendix A – BOC Program**

PRELIMINARY PROGRAM REVIEW FOR THE SAN MATEO YOUTH SERVICES CENTER JUVENILE HALL						
COMPONENT	PERSONS/ UNITS PER AREA	NO OF AREAS	SPACE STANDARD	NSF	COMMENTS	
<b>16.000 GROUP (RECEIVING) HOME</b>						
<i>Staff Areas</i>						
16.134	Director's Office	1	1	150	150	
16.135	Senior Supervisors	1	2	110	220	
16.136	File Room	1	1	100	100	
16.137	Support Staff	1	1	200	200	
16.138	Staff Office	1	1	110	110	
16.139	Service Providers	1	1	130	130	
16.140	Conference Room	1	1	250	250	
16.141	Staff Restroom - Male	1	1	100	100	
16.142	Staff Restroom - Female	1	1	100	100	
16.143	Janitor's Closet	1	1	40	40	
<i>Subtotal NSF - Staff Areas</i>					1,400	
Departmental Grossing Factor				35%	490	
<i>Total DGSF - Staff Areas</i>					1,890	
<i>Facility Support</i>						
16.144	Storage	1	1	100	100	
16.145	Laundry Storage	1	1	50	50	
16.146	Maintenance / Housekeeping	1	1	100	100	
<i>Subtotal NSF - Facility Support</i>					250	
Departmental Grossing Factor				35%	88	
<i>Total DGSF - Facility Support</i>					338	
Total DGSF - Receiving Home Support Core					4,847	
<b>Total DGSF - RECEIVING HOME</b>					<b>10,286</b>	
<b>16.200 Tower Home</b>						
<i>Intake</i>						
16.201	Entry Vestibule	1	1	100	100	
16.202	Property Room	1	1	100	100	
Subtotal NSF - Tower Home Intake					200	
Departmental Grossing Factor				35%	70	
<i>Total DGSF - Tower Home Intake</i>					270	
<i>Unit 1</i>						
<i>Unit 1a - 5 Youth</i>						
16.203	Sleeping - Single	1	3	70	210	
16.204	Sleeping - Double	2	1	50	100	
16.205	Living Room	1	1	200	200	
16.206	Bathroom / Shower	1	2	80	160	
16.207	Storage	1	1	50	50	
<i>Subtotal - Unit 1a - 5 Youth</i>					720	
<i>Unit 1b - 5 Youth</i>						
16.208	Sleeping - Single	1	3	70	210	
16.209	Sleeping - Double	2	1	50	100	
16.210	Living Room	1	1	200	200	
16.211	Bathroom / Shower	1	2	80	160	
16.212	Storage	1	1	50	50	
<i>Subtotal - Unit 1b - 5 Youth</i>					720	
<i>Unit 1c - 5 Youth</i>						
16.213	Sleeping - Single	1	3	70	210	
16.214	Sleeping - Double	2	1	50	100	
16.215	Living Room	1	1	200	200	
16.216	Bathroom / Shower	1	2	80	160	
16.217	Storage	1	1	50	50	
<i>Subtotal - Unit 1c - 5 Youth</i>					720	
<i>Unit 1 - Shared Spaces</i>						
16.218	Multipurpose	1	1	525	525	
16.219	Multipurpose - Restroom	1	1	45	45	
16.220	Staff Restroom	1	1	45	45	
16.221	Interview Room	1	1	100	100	
16.222	Storage	1	1	100	100	
16.223	Laundry	1	2	100	200	
16.224	Outdoor Recreation	15	1	225	3,375	Could be co-located w/Group Home
16.225	Triage	1	1	120	120	
16.226	Janitor's Closet	1	1	40	40	
<i>Subtotal - Unit 1 - Shared Spaces</i>					1,175	
Subtotal NSF - Tower Home Unit 1					3,335	
Grossing Factor				55%	1,834	
<b>Total DGSF - Tower Home Unit 1</b>					<b>5,169</b>	



**SAN MATEO COUNTY  
YOUTH SERVICES CENTER**

**Program Review  
Appendix A – BOC Program**

PRELIMINARY PROGRAM REVIEW FOR THE SAN MATEO YOUTH SERVICES CENTER JUVENILE HALL					
COMPONENT	PERSONS/ UNITS PER AREA	NO OF AREAS	SPACE STANDARD	NSF	COMMENTS
<b>16.000 GROUP (RECEIVING) HOME</b>					
<b>Tower Home - Support Core</b>					
<b>Programs</b>					
16.227 Rec Room	1	1	750	750	
16.228 Rec Room - Storage	1	1	50	50	
16.229 Outdoor Storage	1	1	100	100	
16.230 Family Restroom	1	1	45	45	
<b>Subtotal - Programs</b>				<b>945</b>	
Departmental Grossing Factor				35%	331
<b>Total DGSF - Programs</b>					<b>1,276</b>
<b>Food Service</b>					
16.231 Dining Room	1	1	375	375	
16.232 Kitchen	1	1	100	100	
<b>Subtotal - Food Service</b>				<b>475</b>	
Departmental Grossing Factor				25%	119
<b>Total DGSF - Food Service</b>					<b>594</b>
<b>Education</b>					
16.233 Classroom	1	1	600	600	
<b>Subtotal - Education</b>				<b>600</b>	
Departmental Grossing Factor				25%	150
<b>Total DGSF - Education</b>					<b>750</b>
<b>Staff Areas</b>					
16.234 Director's Office	1	1	150	150	
16.235 Senior Supervisors	1	2	110	220	
16.236 File Room	1	1	50	50	
16.237 Support Staff	1	1	100	100	
16.238 Staff Office	1	1	110	110	
16.239 Service Providers	1	1	130	130	
<b>Subtotal - Staff Areas</b>				<b>760</b>	
Departmental Grossing Factor				35%	266
<b>Total DGSF - Staff Areas</b>					<b>1,026</b>
<b>Facility Support</b>					
16.240 Storage	1	1	100	100	
16.241 Laundry Storage	1	1	50	50	
16.242 Maintenance / Housekeeping	1	1	100	100	
<b>Subtotal - Facility Support</b>				<b>250</b>	
Departmental Grossing Factor				35%	88
<b>Total DGSF - Facility Support</b>					<b>338</b>
<b>Total DGSF - Tower Home Support Core</b>					<b>3,983</b>
<b>Total DGSF - TOWER HOME</b>					<b>9,422</b>
<b>Total DGSF</b>					<b>19,709</b>
Building Grossing Factor				12%	2,365
<b>TOTAL SQ. FT. - GROUP (RECEIVING) HOME</b>					<b>22,074</b>

Source: Program by Voorhis Associates, Inc.; Modifications by Carter Goble Associates; September 6, 2002

K M D

K M D A R C H I T E C T S A N D P L A N N E R S , P . C .

421 SW 6TH AVE, SUITE 1300 PORTLAND, OR 97204 PHONE:503/221-1474 FAX: 503/227-0762

EXHIBIT "C"

STANDARD HOURLY RATES

Principal / Partner	\$ 195/hour
Project Director	\$ 185/hour
Senior Project Designer	\$ 185/hour
Senior Specification Writer	\$ 160/hour
Senior Project Architect	160/hour
Senior Project Manager	140/hour
Senior Contract Administrator	140/hour
Contract Administrator	\$ 120/hour
Job Captain	120/hour
Senior Designer	120/hour
Intermediate Designer	\$ 90 hour
Designer	\$ 75/hour
Specifications Word Processor	\$ 45/hour

Exhibit "C"