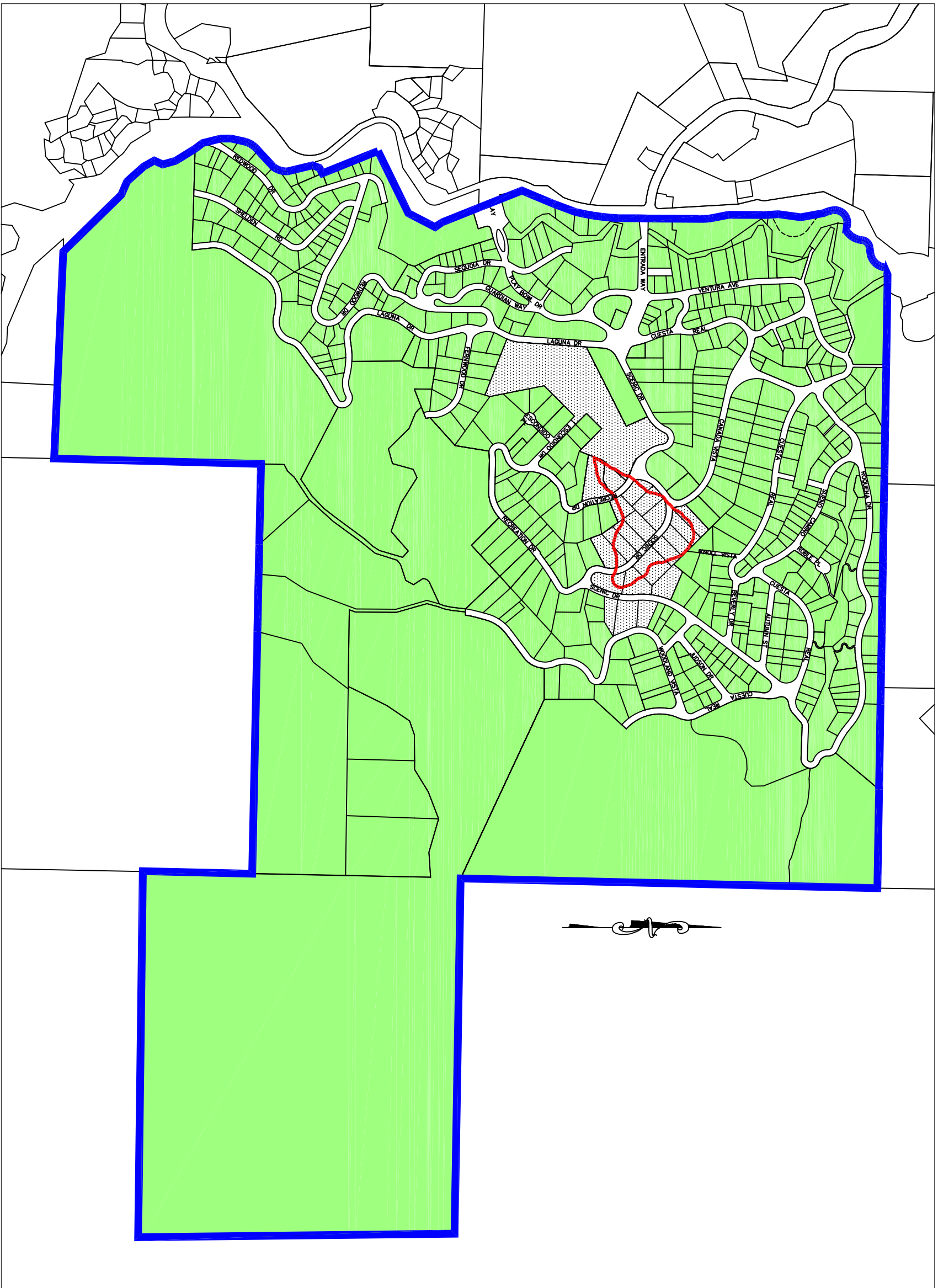




DESIGNED BY: XXX  
 CHECKED BY: XXX  
 DRAWN BY: XXX



- LEGEND**
- ZONE 1
  - ZONE 2
  - DISTRICT BOUNDARY
  - CURRENTLY ACTIVE SLIDE BOUNDARY

SCENIC DRIVE LANDSLIDE ENGINEER'S REPORT  
 ASSESSMENT DISTRICT MAP  
**PROPOSED BOUNDARIES OF LA HONDA LANDSLIDE ASSESSMENT DISTRICT, SAN MATEO COUNTY, CALIFORNIA**

SCALE: NONE  
 DATE: 1/16/08  
 FILE NO: 1/XXXX

JAMES C. PORTER, DIRECTOR OF PUBLIC WORKS  
 SAN MATEO COUNTY  
 555 COUNTY CENTER, 5TH FLOOR  
 REDWOOD CITY, CALIFORNIA 94063-1665