

UNIT II

UNIT I

NORTHEAST RIDGE

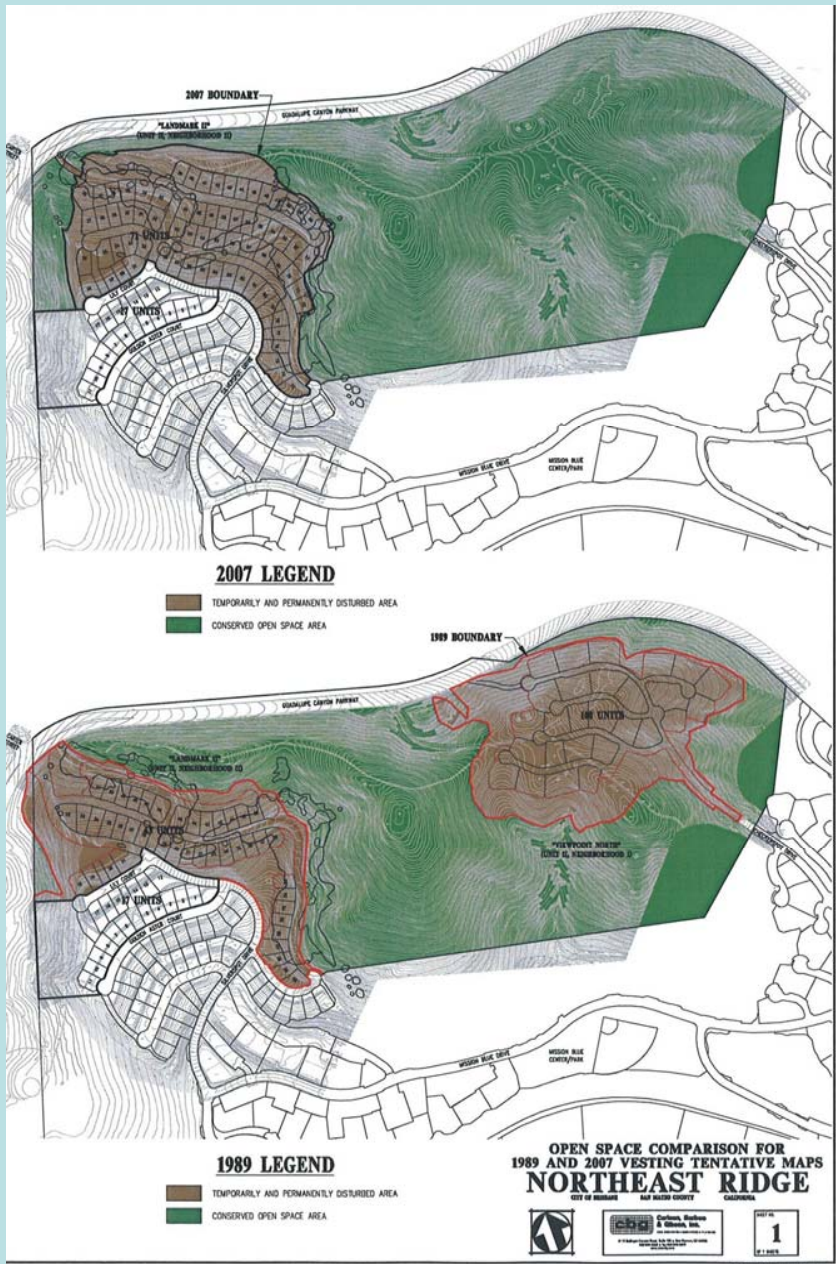
CITY OF BRISBANE SAN MATEO COUNTY CALIFORNIA



cbi Carlson, Barbee & Gibson, Inc.
 CIVIL ENGINEERS ARCHITECTS LANDSCAPE ARCHITECTS
 1511 BRIDGEWAY SUITE 100 SAN MATEO CALIFORNIA 94401
 TEL: 650.253.1234 FAX: 650.253.1235

SHEET NO.
1
 OF 1 SHEET

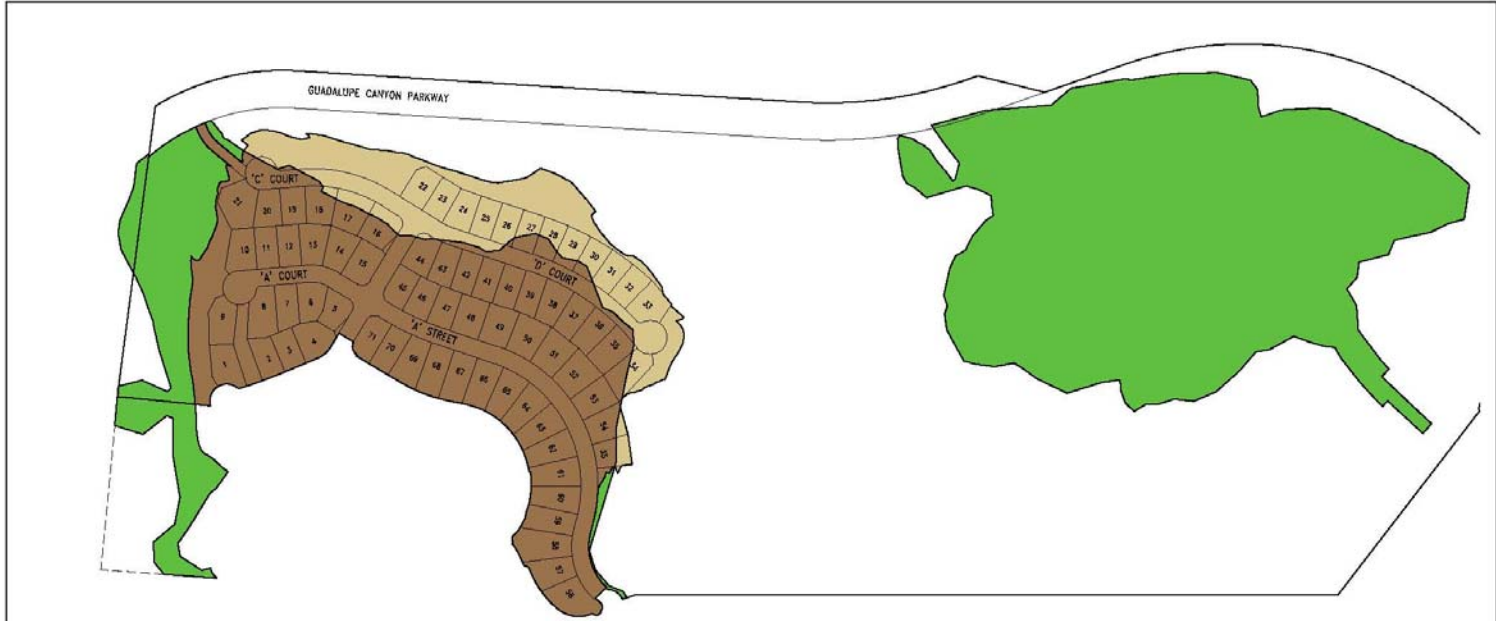
DATE: 02/14/2012 10:00 AM



2007 Vesting Tentative Map

1989 Vesting Tentative Map

Open Space and Development Areas

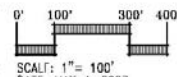


LEGEND

- 1989/2007 DEVELOPMENT AREA
- 2007 DEVELOPMENT AREA OUTSIDE OF 1989 VESTING TENTATIVE MAP
- 1989 DEVELOPMENT AREA - TO REMAIN AS OPEN SPACE

**2007 MODIFIED VESTING TENTATIVE
TRACT MAP COMPARISON
TO 1989 VESTING TENTATIVE TRACT MAP
NORTHEAST RIDGE
LANDMARK AT THE RIDGE
UNIT II - NEIGHBORHOODS 1 AND 2**

CITY OF BRISBANE SAN MATEO COUNTY CALIFORNIA



cbg Carlson, Barbee & Gibson, Inc.
2015 Berkeley Street, Suite 100, San Bruno, CA 94066
 650.333.4444 • Fax: 650.333.4444
 www.cbg.com

SHEET NO.
1
 OF 1 SHEETS

SCALE: 1" = 100'
 DATE: MAY 4, 2007
 JOB NO.: 779-30