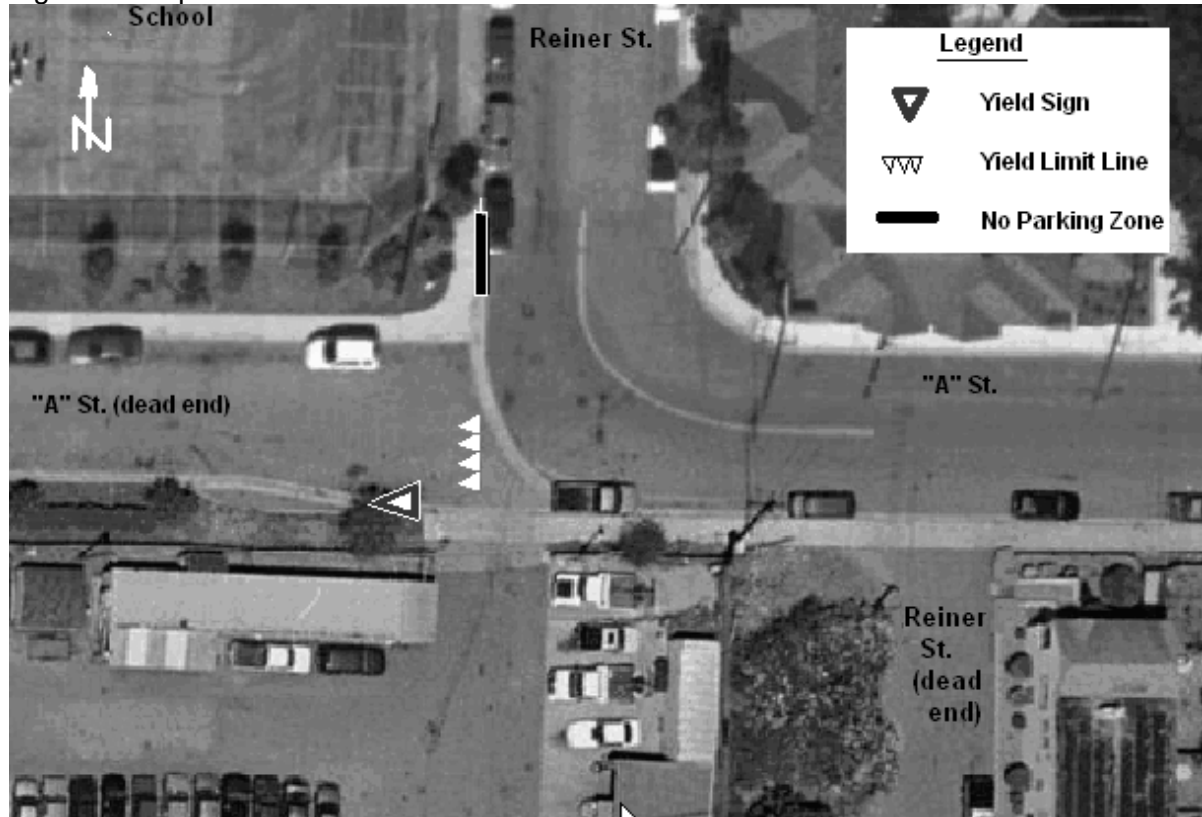


Attachment A – Map of Proposed Traffic Control Device Locations

Installation of a Yield Sign and One No Parking Zone in Broadmoor Village, Town of Colma Area

November 10, 2009

Figure 1. Proposed Traffic Control Devices at “A” Street and Reiner Street



Staff performed a study of this intersection. As a result of our investigations we found:

1. The Average Daily Traffic Volume on Reiner Street near “A” Street was recorded at 758 vehicles per day;
2. The Average Daily Traffic Volume on maintained “A” Street near Reiner Street was recorded at 867 vehicles per day;
3. The Average Daily Traffic Volume on non-maintained “A” Street near Reiner Street was recorded at 308 vehicles per day;
4. The 85th Percentile Speed, which is the speed that 85% of vehicles are traveling at or below, recorded on Reiner Street near “A” Street was 29 mph;
5. The 85th Percentile Speed recorded on maintained “A” Street was 26 mph;
6. The 85th Percentile Speed recorded on non-maintained “A” Street was 17 mph; and
7. Many of the vehicles exiting non-maintained “A” Street did not yield to traffic on maintained “A” Street and Reiner Street.