



COUNTY OF SAN MATEO 2012 - 2013 PROFILE





Fast Facts

FOUNDED: April 19, 1856

SIZE: 455 square miles of land; 292 square miles of water

INCORPORATED CITIES: 20

COASTLINE: 57.7 miles

ELEVATION: Sea level to 2,629 feet (near Long Ridge Road, La Honda)

POPULATION: 718,451

NUMBER OF HOUSING UNITS: 271,031¹

UNEMPLOYMENT RATE: 7.5 percent (March 2012)²

PER CAPITA INCOME: \$43,958³

MEDIAN HOUSEHOLD INCOME: \$85,684⁴

ASSESSED VALUE OF TAXABLE PROPERTY: \$142.5 billion in 2011⁵

TAXABLE SALES: \$11.96 billion in 2010⁶

AGRICULTURAL PRODUCTION: \$143.7 million in 2010⁷

San Mateo County Overview

THE COUNTY WAS ESTABLISHED ON APRIL 19, 1856 and is one of California's 58 counties.

Within its 455 square miles San Mateo County is home to some of the most spectacular and varied geography in the United States. It stretches from the Pacific Ocean to San Francisco Bay and includes redwood forests, rolling hills, farmland, tidal marshes, creeks and beaches.

The County is known for its mild climate and scenic vistas. No matter the starting point, a 20-minute drive can take a visitor to a vista point with a commanding view of the Bay or Pacific, a mossy forest or a shady park or preserve.

San Mateo County has long been a center for innovation. It is home to numerous colleges and research parks and is within the "golden triangle" of three of the top research institutions in the world: Stanford University, the University of California at San Francisco and the University of California at Berkeley. Today, San Mateo County's bioscience, computer software, green technology, hospitality, financial management, health care and transportation companies are industry leaders. It also has thriving small businesses.

As in all counties in California, San Mateo County government plays a dual role that differs from cities.

Cities generally provide basic services such as police and fire protection, sanitation, recreation programs, planning, street repair and building inspection. There are 20 cities within San Mateo County, each governed by its own city council.

As subdivisions of the state, counties provide a vast array of services for all residents. These include social services, public health protection, housing programs, property tax assessments, tax collection, elections and public safety. Counties also provide basic city-style services for residents who live in an unincorporated area, not a city.

San Mateo County voters elect five supervisors to oversee County government operations.

History

MEMBERS OF A SPANISH EXPLORATION TEAM IN 1769 WERE the first Europeans to set foot on what is now San Mateo County. Led by Gaspar de Portola, the team was also the first to discover San Francisco Bay, spotting it from a hill now called Sweeney Ridge between San Bruno and Pacifica.

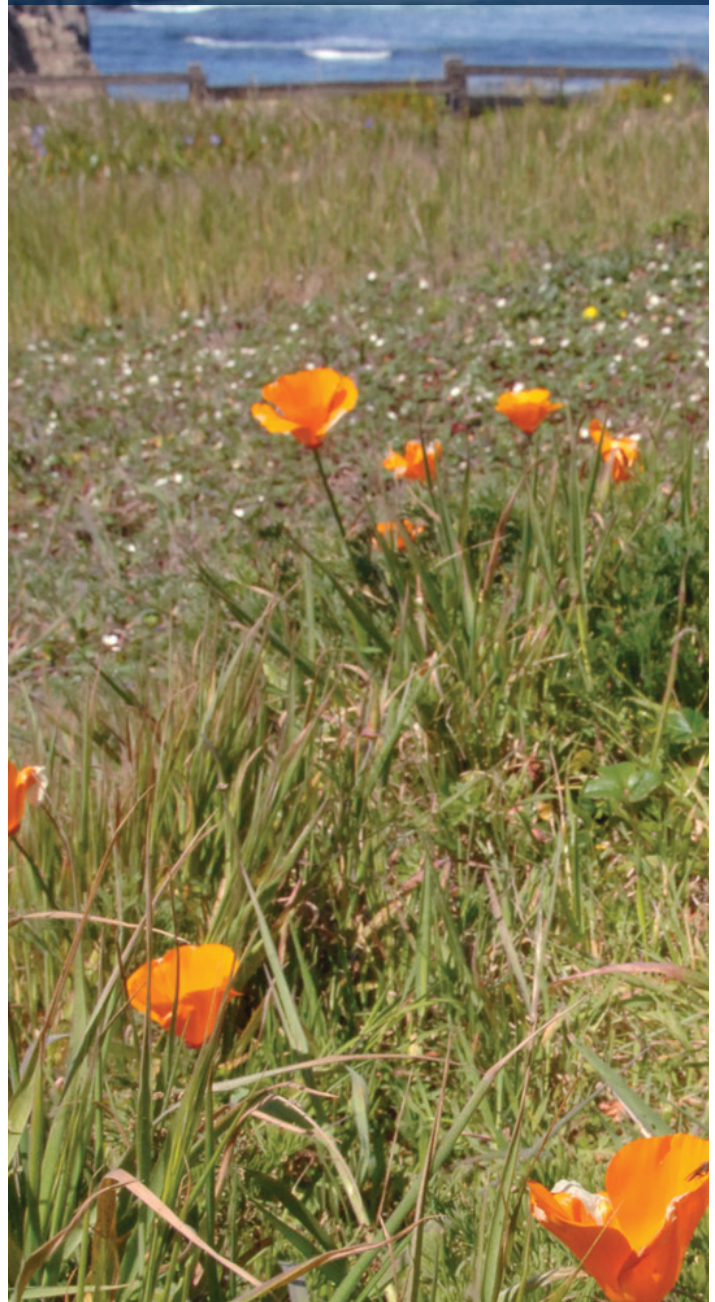
The Spanish found the Peninsula inhabited by up to 2,400 Native Americans called the Ohlone. The Spanish developed a pathway linking missions along the California coast. This pathway grew into El Camino Real, or The King's Highway, and played a central role in shaping the development of the region.

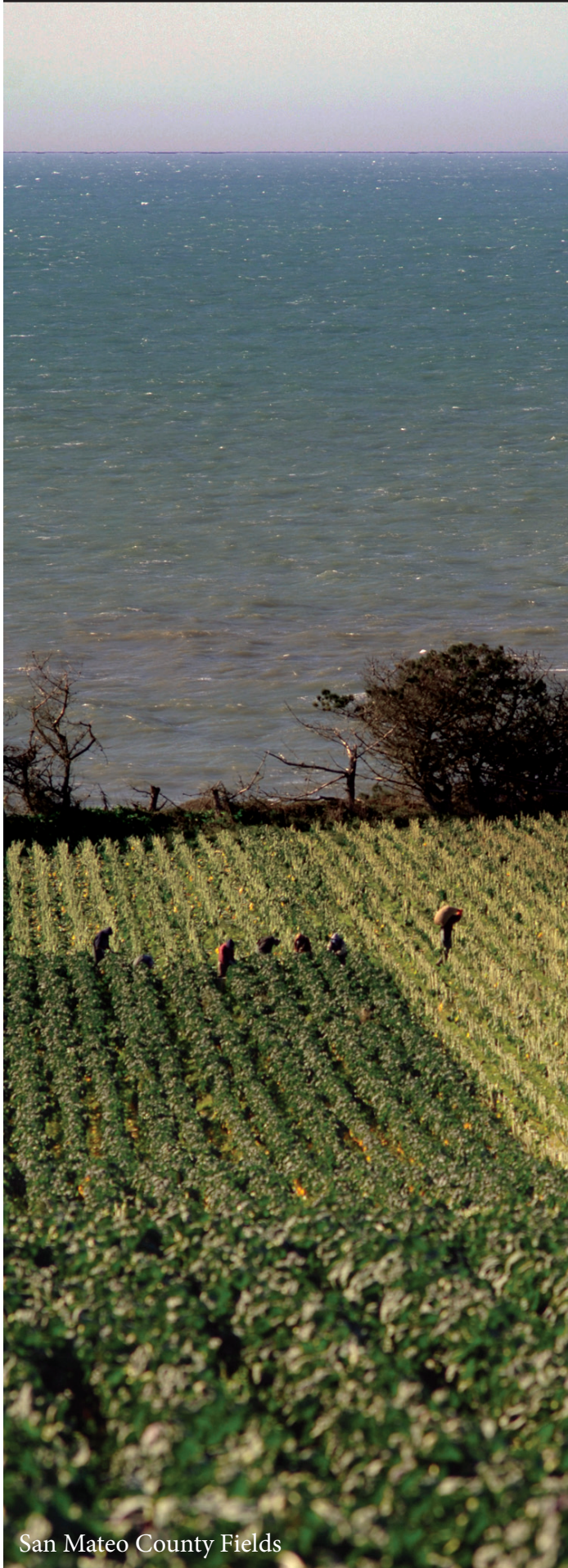
Our Mission

SAN MATEO COUNTY GOVERNMENT protects and enhances the health, safety, welfare and natural resources of the community, and provides quality services that benefit and enrich the lives of the people of this community.

We are committed to:

- The highest standards of public service;
- A common vision of responsiveness;
- The highest standards of ethical conduct;
- Treating people with respect and dignity.





San Mateo County Fields

Spain ruled California until Mexico assumed control in 1821. The Mexican government granted large tracts of land to private owners to encourage settlement. The names of some of the ranchos from this period can still be seen in modern San Mateo County, including Buri Buri, Pulgas, San Gregorio, San Pedro and Pescadero.

California came under the control of the United States in 1846 following hostilities with Mexico. The discovery of gold in the Sierra foothills brought a wave of settlers and statehood to California in 1850. The Peninsula's redwoods helped to build booming San Francisco while the region's fishing and cattle industries helped to feed the growing population.

The Birth of San Mateo County

When California achieved statehood, most of modern San Mateo County was within San Francisco County. But in 1856 the southern portion of San Francisco County was separated to form San Mateo County as part of the effort to reform San Francisco's corrupt government. More territory was added in 1868 from Santa Cruz County.

San Mateo County had 3,214 residents in 1856. The county bears the Spanish name for St. Matthew.

By 1864 daily trains were running along the Peninsula from San Francisco to San Jose. During this period wealthy businessmen from throughout the West started to buy large tracts of land upon which to build estates.

These include William Ralston, Alvinza Hayward, Harriet Pullman Carolan, James Flood and William Bourn. While most are now gone — Hayward's burned and Flood's was torn down — a few still survive. Ralston Hall is used for special events at Notre Dame de Namur University in Belmont, the Carolands Mansion in Hillsborough remains one of the largest residences in the United States and Bourn's mansion near Woodside, Filoli, is open to the public for tours.

Cities began to take shape along the railroad line and across the Peninsula. Redwood City, the county seat, incorporated in 1867. The next to incorporate was San Mateo in 1894. The new century brought a wave of incorporations.

Logging, farming, meat packing, ship building, salt production and cement works fueled the local economy. Meanwhile, the Spring Valley Water Company was busy acquiring what became the Crystal Springs watershed to supply fresh water to San Francisco and the Peninsula.

Rapid Growth

The transportation system improved as more people moved to the Peninsula. An electric streetcar line linked San Mateo to San Francisco in 1903. The Dumbarton Railway Bridge crossed the



South San Francisco City Hall

Bay in 1910. Automobiles could cross the Bay on the Dumbarton Bridge in 1925 and the San Mateo-Hayward Bridge in 1929. Mills Field, which later became San Francisco International Airport, opened next to the Bay during this period.

On the coast, a different kind of business was taking off. Rum-runners and bootleggers were busy during Prohibition. The coast's isolation and often foggy shoreline made it an ideal location for smugglers whisking cargo to San Francisco or Peninsula road houses.

The outbreak of World War II fueled a new wave of growth along the Peninsula. After the war, thousands of new homes were built as the county's population swelled from 115,000 in 1940 to 235,000 in 1950. New cities continued to form to provide municipal services.

Post-War Boom

The influx of workers and rise of technology changed the area's economy. Electronics emerged as the leading post-war industry. Stockyards, steel mills and tanneries quickly gave way to industrial parks, warehouses and light manufacturing. San Francisco International Airport helped to fuel growth as air travel changed the way people traveled and the way goods were shipped.

Public schools and colleges, libraries, recreation centers and parks were built to keep pace with the soaring population. The fast pace of development had other consequences. A strong

conservation movement sprang up to preserve the coast and open spaces from sprawl. Residents worked to limit air and water pollution, to halt filling the Bay for more homes and office parks and to fight freeway expansions.

The county's population grew to 556,000 by 1970, a gain of 112,000 during the 1960s. The rapid pace of growth began to slow but significant events continued to shape the Peninsula. The Junipero Serra Freeway, Interstate 280, was completed in 1974. Three years later the San Mateo County Transit District (SamTrans) consolidated several city bus lines into one system.

Innovation

Long a home to innovators, the Peninsula continues to evolve. During the 1980s and 1990s biotechnology companies moved into South San Francisco while computer software, Internet and gaming companies shifted the boundary of Silicon Valley to the north. San Francisco International Airport opened a \$1 billion international terminal in 2000 as the region's gateway to the Pacific Rim.

Today, San Mateo County is home to more than 729,443 people who live in 20 cities and numerous unincorporated areas, from leafy suburbs to isolated coastal hamlets.

The vibrant economy, mild climate and quality of life attracts people from all over the world. More than a third of the population was born in another country. The area is also gaining popularity as a tourist destination.^{8,9,10}



County Center, Redwood City



San Mateo County Government

SAN MATEO COUNTY IS GOVERNED by a five-member Board of Supervisors. Supervisors are elected in a countywide vote but each must live within a separate geographic district. The districts are roughly equal in population but vary in size.

Supervisors are elected to staggered four-year terms with a maximum of three terms in office. They appoint the County Manager to carry out the Board's policies and goals and oversee the efficient running of County government.

Voters also elect six additional San Mateo County officials. They are the Assessor-County Clerk-Recorder, District Attorney, Controller, Coroner, Sheriff and Treasurer-Tax Collector.

The Superior Court appoints the Chief Probation Officer and the Superior Court Executive Officer.

San Mateo County Board of Supervisors

DAVE PINE, 1ST DISTRICT

San Mateo (west portion, adjacent to Hillsborough), Hillsborough, Burlingame, Millbrae, San Bruno, South San Francisco (east of El Camino Real), Burlingame Hills, Highlands/Baywood Park and San Francisco International Airport

CAROLE GROOM, 2ND DISTRICT

Belmont, Foster City, San Mateo

DON HORSLEY, 3RD DISTRICT

Atherton, Redwood Shores, Half Moon Bay, Pacifica, San Carlos, Portola Valley, Woodside, Devonshire, El Granada, Emerald Lake Hills, Harbor Industrial, La Honda, Ladera, Loma Mar, Los Trancos Woods/Vista Verde, Menlo Oaks, Montara/ Moss Beach, Palomar Park, Pescadero, Princeton, San Gregorio, South Coast/Skyline, Sequoia Tract, Skylonda, Stanford Lands and West Menlo Park

ROSE JACOBS GIBSON, 4TH DISTRICT

Redwood City, Menlo Park, East Palo Alto, North Fair Oaks, Oak Knoll

ADRIENNE J. TISSIER, 5TH DISTRICT

Brisbane, Colma, Daly City, South San Francisco (west of El Camino Real) Broadmoor, Country Club Park

County Statistical Profile

Population

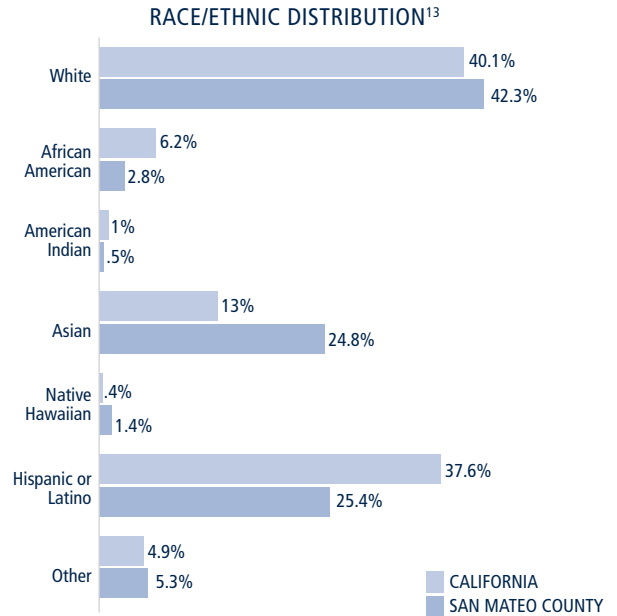
THE 2010 CENSUS TALLIED 718,451 PEOPLE living in San Mateo County, a modest 1.6 percent increase from the 2000 Census.

San Mateo County is the 14th-most populous among California's 58 counties, sandwiched between the City and County of San Francisco at 13 and San Joaquin County at 15.

Census Population	2000	2010	Change
San Mateo County	707,163	718,451	11,288
Atherton	7,194	6,914	-280
Belmont	25,123	25,835	712
Brisbane	3,597	4,282	685
Burlingame	28,158	28,806	648
Colma	1,187	1,792	605
Daly City	103,625	101,123	-2,502
East Palo Alto	29,506	28,155	-1,351
Foster City	28,803	30,567	1,764
Half Moon Bay	11,842	11,324	-518
Hillsborough	10,825	10,825	0
Menlo Park	30,785	32,026	1,241
Millbrae	20,718	21,532	814
Pacifica	38,390	37,234	-1,156
Portola Valley	4,462	4,353	-109
Redwood City	75,402	76,815	1,413
San Bruno	40,165	41,114	949
San Carlos	27,718	28,406	688
San Mateo	92,482	97,207	4,725
South San Francisco	60,552	63,632	3,080
Woodside	5,352	5,287	-65
Total Cities	645,886	657,229	11,343
Unincorporated	61,277	61,222	-55

Race Distribution

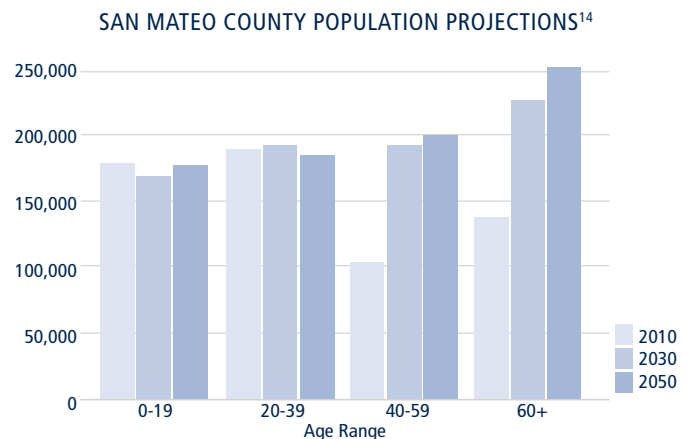
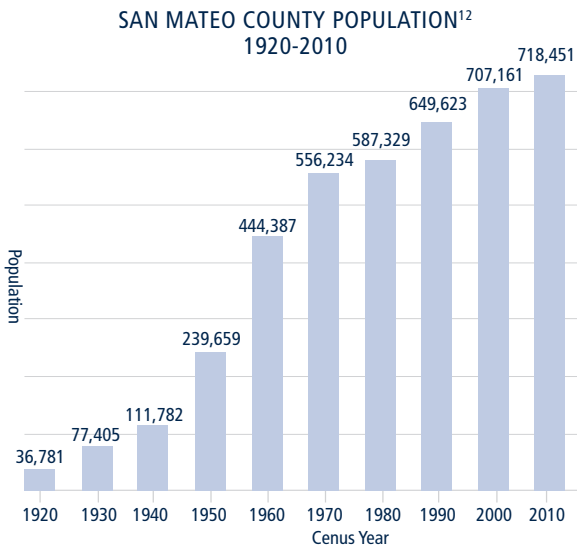
San Mateo County's racial and ethnic composition is as varied as its geography. The county continues to see growth in the Hispanic and Asian populations and a decline in the white population.



Population Projections

The county is also undergoing a dramatic shift in the age structure. The 2010 Census found that the median age of San Mateo County residents was 39.3 years, well above the state's median age of 35.2 years. Portola Valley (51.3 years) had the highest median age while East Palo Alto (28.1 years) had the lowest.

As depicted by the chart below, the population of the county 65 and over is expected to increase dramatically in the coming decades. This will put pressure on local governments to provide services to an aging population.



Employment and Industry

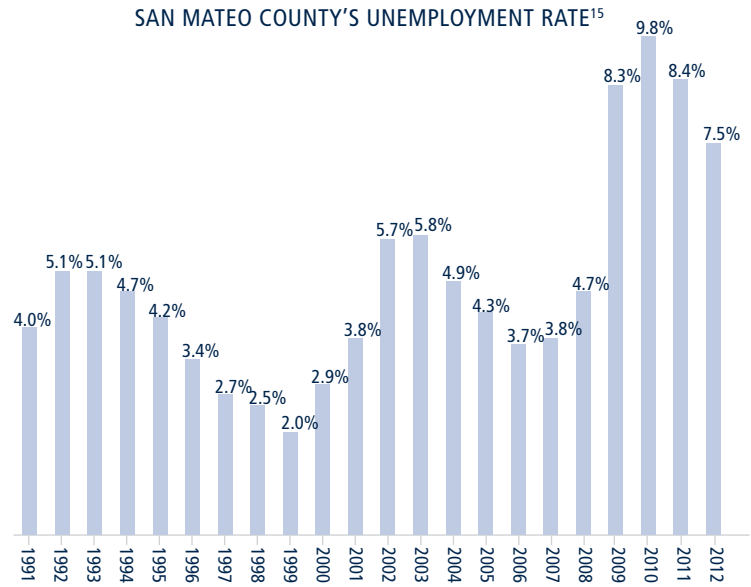
SAN MATEO COUNTY IS HOME TO DIVERSE BUSINESSES, from international corporations to small shops and manufacturers. The county's largest employers include Genentech, Inc., Oracle Corp., San Mateo County, Kaiser Permanente, Mills-Peninsula Health Services, Electronic Arts, Inc., United Airlines and the San Mateo County Community College District.

San Mateo County is also home to seven of the 10 largest venture capital firms in the Bay Area. These firms fuel innovation by providing early funding for high-risk — and potentially high-reward — start-up companies.

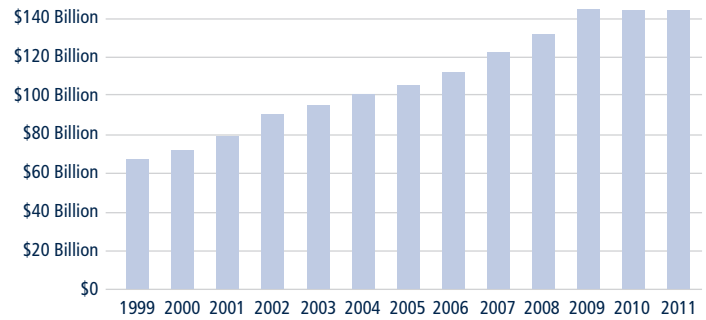
Five of the Bay Area's 10 largest biotech patent recipients in 2009 also called San Mateo County home. And five of the Bay Area's largest software companies are based in San Mateo County.

Yet the county is not immune to the forces affecting the overall economy. San Mateo County's unemployment rate stood at 7.5 percent in early 2012, far above historic levels but still below the state average.

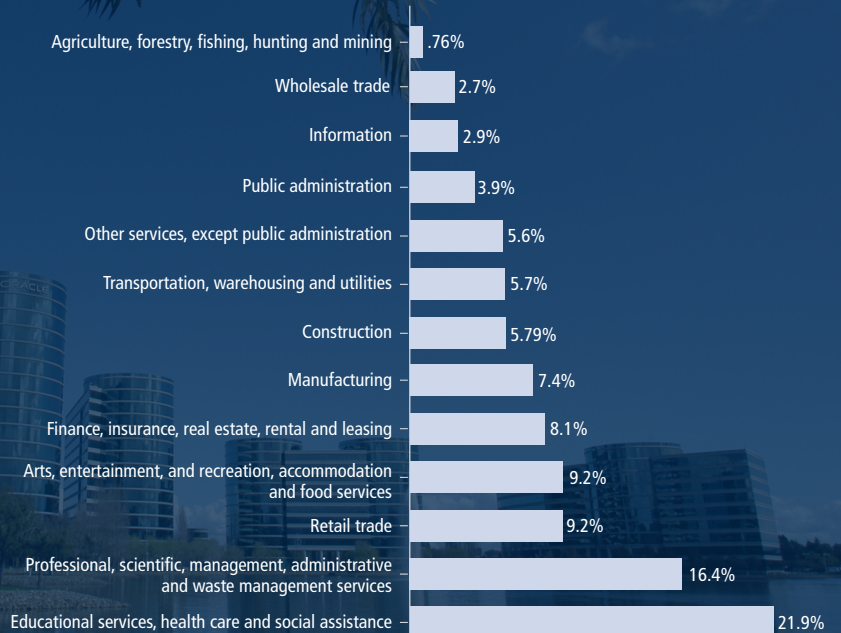
SAN MATEO COUNTY'S UNEMPLOYMENT RATE¹⁵



TOTAL TAXABLE ASSESSED VALUE¹⁶



CIVILIAN EMPLOYED POPULATION BY INDUSTRY 16 AND OVER 2010¹⁷



Income and Housing

SAN MATEO COUNTY'S MEDIAN HOUSEHOLD INCOME in 2010 was \$85,684, and per capita income was \$43,958. By comparison, California's median household income was \$60,883 and per capita income was \$29,188 in 2010.¹⁸

Incomes may be higher overall in San Mateo County than in the rest of the state but housing prices are as well. Median housing prices (new and resale houses and condominiums) for April 2011 were \$550,000 in San Mateo County, \$390,000 in the Bay Area, and \$249,000 in California overall.

Rents continue to increase. Average rent for a two-bedroom apartment in San Mateo County was \$2,066 in the first quarter of 2012, up 17.1 percent from the previous year.

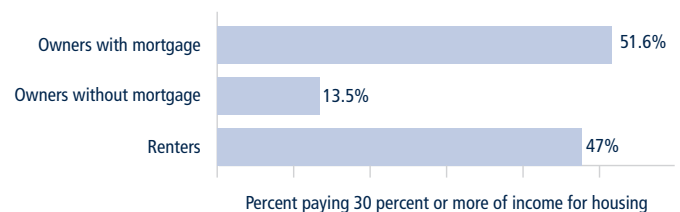
The number of financially distressed homeowners who were issued notices of default — the first step in the foreclosure process — fell 12.1 percent during the first three months of 2011 compared with the same period in 2010.



Housing Costs

The median monthly housing costs for mortgaged owners was \$3,184, nonmortgaged owners \$508, and renters \$1,443. More than 50 percent (51.6) of owners with mortgages, 13.5 percent of owners without mortgages, and 47 percent of renters in San Mateo County spent 30 percent or more of household income on housing.

OCCUPANTS WITH A HOUSING COST BURDEN IN SAN MATEO COUNTY, CALIFORNIA IN 2009²⁰



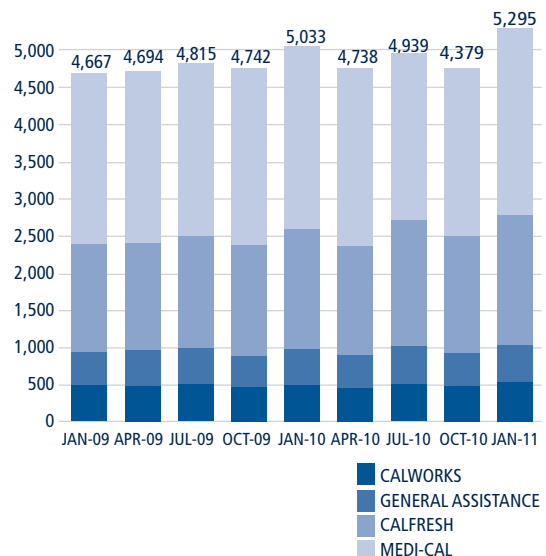
NOTICES OF DEFAULT

County/Region	NOTICES OF DEFAULT			Change from 2011-2012
	Q1 2010	Q1 2011	Q1 2012	
San Mateo County	943	829	612	-26.2%
Bay Area	13,517	11,388	8,761	-22.8%
California	81,054	68,239	56,258	-17.6%

REAL ESTATE TRANSACTIONS¹⁹

	Sales Volume			Median Price		
	March 11	March 12	%Chng	March 11	March 12	%Chng
All homes						
Alameda	1,400	1,539	9.9%	\$341,000	\$328,000	-3.8%
Contra Costa	1,414	1,519	7.4%	\$245,000	\$256,500	4.7%
Marin	249	269	8.0%	\$668,250	\$565,000	-15.5%
Napa	128	127	-0.8%	\$308,000	\$328,000	6.5%
Santa Clara	1,665	1,781	7.0%	\$460,000	\$475,000	3.3%
San Francisco	495	551	11.3%	\$650,000	\$650,000	0.0%
San Mateo	579	645	11.4%	\$555,000	\$541,500	-2.4%
Solano	608	688	13.2%	\$190,000	\$189,000	-0.5%
Sonoma	513	575	12.1%	\$285,000	\$295,000	3.5%
Bay Area	7,051	7,694	9.1%	\$360,000	\$358,000	-0.6%

PUBLIC ASSISTANCE APPLICATIONS²¹



Transportation

THE COUNTY IS HOME TO THE SECOND-LARGEST AIRPORT in California and the only deepwater port in the southern part of San Francisco Bay. Thousands of people a day board three major mass transit systems that serve the county: BART, Caltrain and SamTrans. The network of roads include busy freeways linking the county to San Francisco and Silicon Valley, two bridges to the East Bay and rural roads that wind through farmland and redwoods.

Since the days the Spanish built El Camino Real, efficient transportation has played a critical role in the economy and culture of the Peninsula.

Port of Redwood City

Located 18 nautical miles south of San Francisco, the Port of Redwood City specializes in liquid and bulk cargo for the construction industry.

Cargo tonnage at the Port for the first three quarters of Fiscal Year 2011-2012 (July 1, 2011, to June 30, 2012) was 965,033 metric tons, an increase of 390,165 metric tons or more than 68 percent than the first three quarters of the previous fiscal year. Fifty-five vessels (37 ships and 18 barges) made calls during the first three quarters of the fiscal year compared to 33 vessels (21 ships and 12 barges during the same period during the prior fiscal year.²²

In addition to its role in the economy, the port operates a public boat launch with access to San Francisco Bay and hosts numerous recreational opportunities. The port is a department of the City of Redwood City.



Port of Redwood City



San Francisco International Airport

Located along San Francisco Bay east of San Bruno, San Francisco International is one of the busiest airports in the world. More than three dozen airlines serve destinations around the globe.

Although located within the boundaries of San Mateo County, the airport is owned and operated by the City and County of San Francisco. Commonly known by its international code of SFO, the airport is a significant economic engine for the entire region and provides job opportunities for tens of thousands of people either at the airport or at importers, exporters, warehouses, food-service companies, tourist attractions and other industries.

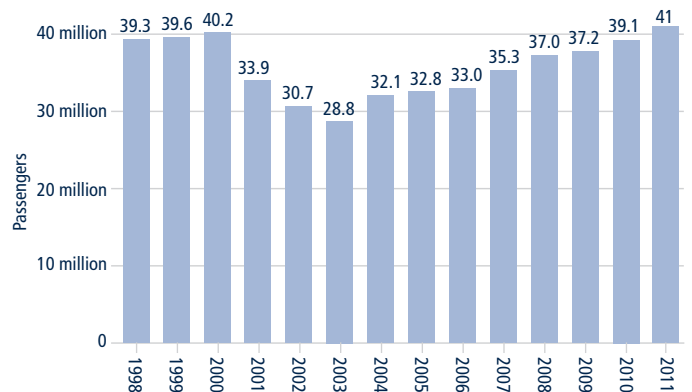
Passenger traffic grew 4.1 percent in calendar year 2011, to 41 million. Strong growth continued into the early months of 2012: the number of passengers traveling at SFO grew by 10.9 percent from March 2012 over March 2011.

In 2011 international travel accounted for nearly a quarter of the overall passenger traffic, or 9 million passengers.

SFO was the 23rd busiest airport in the world in 2010 (the latest year global figures are available) and the ninth busiest in the United States in passenger volume.

SAN FRANCISCO INTERNATIONAL AIRPORT
COMPARATIVE TRAFFIC REPORTS²³

Total Enplaned and Deplaned Passengers



Public Transit Options

San Mateo County residents and visitors have numerous public transportation options.

BART

Six San Mateo County stations link commuters to a rail system with stops in San Francisco, Contra Costa and Alameda counties. In 2003, a major project was completed to link BART from its then-terminus in Colma to San Francisco International Airport

BART is operated by the Bay Area Rapid Transit District.

Caltrain

Rail passenger service on the Peninsula began in 1863. Today, Caltrain operates along 77 miles of track from San Francisco to Gilroy.

Although ridership has increased sharply since 2004, Caltrain faces a fiscal crisis. Caltrain is the only transit system in the Bay Area without a permanent, dedicated source of funding. Other agencies rely on money from sales taxes, property taxes, state funding and other sources. Caltrain has no such source.

The agency is exploring numerous options to improve its finances.

Caltrain is operated by the Peninsula Corridor Joint Powers Board, a tri-county partnership of the City and County of San Francisco, San Mateo County Transit District and Santa Clara Valley Transportation Authority.

SamTrans

In 1976 a total of 11 separate municipal bus systems were consolidated into the San Mateo County Transit District, commonly known as SamTrans. Today, SamTrans operates bus service throughout San Mateo County.

SamTrans also provides paratransit service to more than 1,100 people each day.



Safety

PUBLIC SAFETY IS A TOP PRIORITY. A community’s crime rate can be linked to the overall quality of life. In 2009, San Mateo County’s violent crime was among the lowest in the state at 276.1 violent crimes per 100,000 residents. The violent crime rate for the state of California by comparison was 453.6 per 100,000 residents.

SAN MATEO COUNTY CRIMES²⁴

Category/crime	2005	2006	2007	2008	2009
Violent crimes	2,447	2,195	2,129	2,167	2,072
Homicide	30	22	13	18	16
Forcible rape	155	155	144	142	128
Robbery	715	716	700	731	734
Agg. Assault	1,547	1,302	1,272	1,276	1,194
Property crimes	9,744	9,504	8,422	9,463	8,677
Burglary	3,335	2,969	2,547	2,854	3,072
Vehicle Theft	2,732	2,749	2,219	2,415	1,988
Total larceny-theft	12,561	12,074	10,774	11,698	10,712
Over \$400	3,677	3,786	3,656	4,194	3,617
\$400 And under	8,884	8,288	7,118	7,504	7,095
Arson	151	149	149	118	125



Coyote Point County Park, San Mateo

Health

SAN MATEO COUNTY IS COMMITTED TO A HEALTHY COMMUNITY. A recent report by the Robert Wood Johnson Foundation ranked San Mateo County as the fifth healthiest out of California’s 58 counties on a number of key measures. These included premature death and the number of adults without health insurance, among others.

The County collaborates with community-based partners to provide access to health care services, especially for those who need them the most. With the rising rates of chronic diseases such as obesity, diabetes and heart disease, the county also works with communities to promote the health and well being of all residents by creating safe and convenient opportunities for everyday physical activities and healthy food choices



Junipero Serra County Park, San Bruno

Education

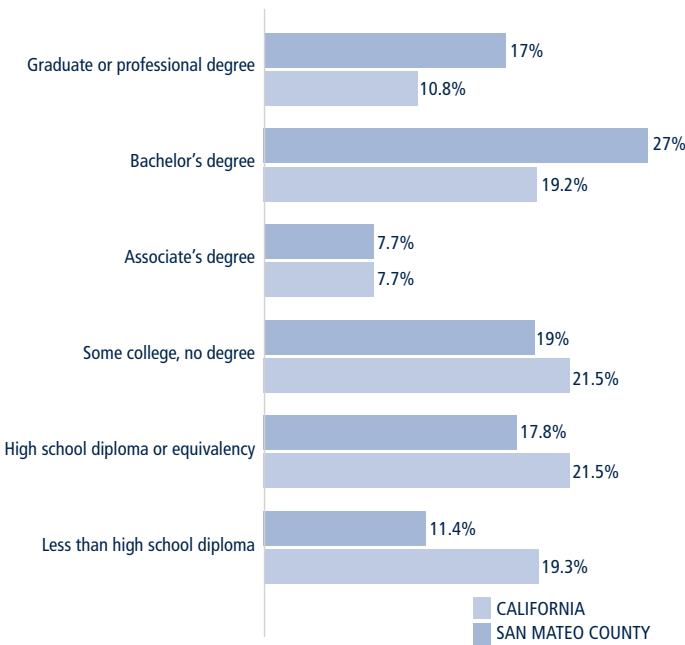
SAN MATEO COUNTY IS HOME TO 183 PUBLIC SCHOOLS and many private schools. Public school enrollment rose to 92,124 in the 2010-11 school year, from 91,373 in 2009-10 and 89,941 in 2008-09. College or graduate school enrollment was 53,653.²⁵

In 2010, 88 percent of people 25 years and older had at least graduated from high school, 44 percent had bachelor's degree or higher and 11.4 percent were dropouts.

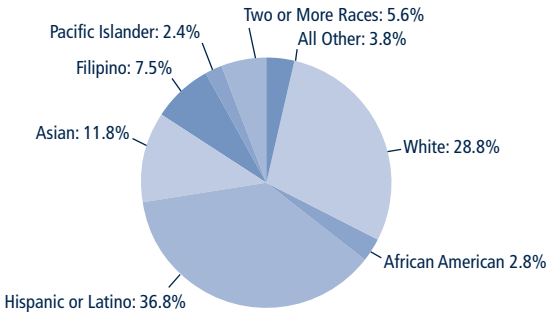


The ethnic composition of the student population has changed over the past decade. The percentage of white students has declined while the percentage of other ethnic groups has grown.

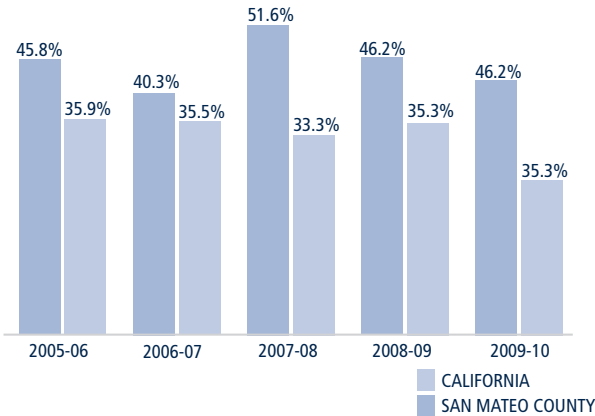
EDUCATIONAL ATTAINMENT OF PEOPLE IN SAN MATEO COUNTY VS. STATE IN 2009²⁶



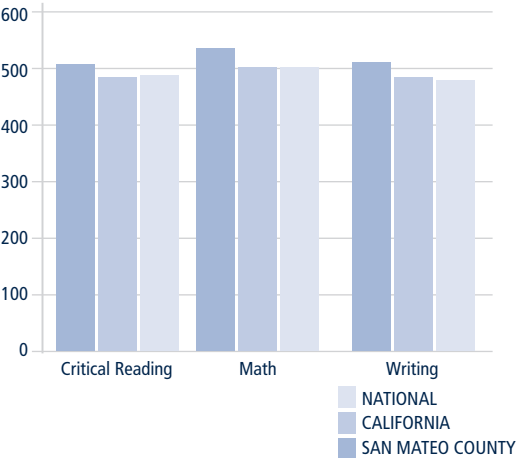
ETHNIC, LANGUAGE AND SOCIOECONOMIC DIVERSITY IN SAN MATEO COUNTY 2008-09²⁸
PUBLIC SCHOOL STUDENT ETHNICITY



PERCENTAGE OF HIGH SCHOOL GRADUATES WITH UC/CSU REQUIRED COURSES²⁷



AVERAGE SAT SCORES 2008-2009²⁹



Sources

1. Census Quickfacts
2. California Employment Development Department, April 2011
3. 2011 Census ACS
4. U.S. Census Bureau, 2009 American Community Survey
5. San Mateo County Assessor's Office
6. California Board of Equalization
7. San Mateo County 2010 Agricultural Crop Report
8. "San Mateo County ... Its History and Heritage," San Mateo County Historic Resources Advisory Board, San Mateo, Calif., 1983
9. "San Mateo County: A Sesquicentennial History," Mitchell P. Postel, Star Publishing Co., Belmont, Calif., 2007
10. "From Frontier to Suburb: The Story of the San Mateo Peninsula," Alan Hynding, Star Publishing Co., Belmont, Calif., 1982
11. U.S. Census Bureau, 2010 Census
12. U.S. Census Bureau, 2010 Census
13. U.S. Census Bureau, 2010 Census
14. State of California, Department of Finance, *Population Projections for California and Its Counties 2000-2050, by Age, Gender and Race/Ethnicity*, Sacramento, California, July 2007
15. California Employment Development Department, Monthly Labor Force Data for Counties, April 2011
16. San Mateo County Assessor's Office
17. U.S. Census Bureau, 2009 American Community Survey
18. U.S. Census Bureau, 2009 American Community Survey
19. www.DQNews.com
20. U.S. Census Bureau, American Community Survey, 2009
21. San Mateo County Human Services Agency
22. Port of Redwood City News Release
23. San Francisco International Airport Comparative Traffic Reports
24. California Department of Justice, 2009 California Criminal Justice Profile
25. U.S. Census Bureau, American Community Survey, 2009
26. U.S. Census Bureau, American Community Survey, 2009
27. San Mateo County Office of Education
28. San Mateo County Office of Education
29. San Mateo County Office of Education

Photo credits:

Photos by Jack Yaco, Gina Wilson, Marshall Wilson, Caltrain, SamTrans and Scott Buschman Photography