

# San Mateo County Correctional Facilities Frequently Asked Questions

Volume 1, Issue 1

July 3, 2008

San Mateo County

## How many Jails are there in San Mateo County?

### Sheriff's Facilities:

1. Maguire Correctional facility
2. Maple Street Facilities
  - Women's Correctional Center
  - Weekender Dorm
  - Men's Secure Transitional Facility
3. Medium Security Facility
4. North County Correctional Facility

Currently, there are 11 jails within our county, seven are under the control of San Mateo County. The San Mateo County Sheriff's Office facilities include the Maguire Correctional Facility and the Maple Street Correctional Facilities, located in Redwood City; the Medium Security Facility, located in La Honda; and the Sheriff's North



Maguire Correctional Facility  
300 Bradford Street  
Redwood City

County Correctional Facility and Courthouse located in the city of South San Francisco. The Probation Department is responsible for The Margaret Kemp Girls Camp, the Youth Services Center, located in unincorporated San Mateo County near the City of San Mateo; and Camp Glenwood, located in La Honda. San Francisco is responsible for the Log Cabin and Hidden Valley Ranch, located in La Honda, in unincorporated San Mateo County; and two jails in an unincorporated area of San Mateo County near San Bruno.

### Probation Department:

1. The Margaret Kemp Girls Camp
2. Youth Services Center
3. Camp Glenwood

### San Francisco Facilities in San Mateo County:

1. The Log Cabin
2. Hidden Valley Ranch
3. County Jail #5
4. County Jail #7

## **Are all these jails currently open?**

No. The Sheriff's North County Correctional Facility is not currently in use, although the adjacent North County Courthouse is still operating. And while the Medium Security Facility in La Honda has been closed since 2003, it is currently being renovated in anticipation of re-opening in the near future. The Hidden Valley facility is also closed, but is owned by the County of San Francisco and could be opened at any time.



## **Who is responsible to oversee jail operations in San Mateo County?**

The California Penal Code clearly authorizes the Sheriff in each California county to operate and supervise all county adult correctional facilities in their jurisdiction. In San Mateo County, two jails owned by the County of San Francisco are located within our boundaries, but are operated by San Francisco. Juvenile offenders are housed in separate facilities from adults and those jails are supervised by the local Chief Probation Officer.

## How many inmates are incarcerated in San Mateo?

In 2007, there were about 1200 adult inmates in custody in our county each and every day. About two thirds of them are in custody awaiting trial and the other third are serving their court imposed sentences. Three fourths of the inmates have at least one felony charge and the others are held on strictly misdemeanor charges. About 85% on the inmates are men and 15% are women.



## Are the current number of adult correctional facilities in our county adequate?

No. The current State of California rated capacity for adult offender correctional facilities operated by the San Mateo County Sheriff is 834 inmates. As stated earlier, the average inmate daily population in our county in 2007 was 1200, causing serious overcrowding in both the Maguire Correctional Facility and the Women's Correctional Center. The San Mateo County Civil Grand Jury recently stated that the Women's Correctional Center "is a crowded disgrace and should be replaced."

The Women's Correctional Center "E" Dorm is rated for 18 inmates. The average occupancy of "E" Dorm is 45 inmates.

## What steps have been taken to alleviate overcrowding in our jails?

In 2005, a task force consisting of a number of County departments, including the Sheriff, the Board of Supervisors, the District Attorney, the Courts and the County Manager was formed to take a closer look at the overcrowding problems in our jails. Their work resulted in the commissioning and completion of a comprehensive needs assessment that was completed in 2008 and makes a number of important recommendations dealing with jail overcrowding. In addition to those efforts, the Sheriff continues to operate the Sheriff's Work Program, an out of custody alternative sentencing program that reduces the number of incarcerated inmates by nearly 500 per day.

### County's Response

- Jail Overcrowding Task Force
- Criminal Justice Working Group
- Conducted Needs Assessments
- Hosted Gender Specific Summit
- Funded the Jail Planning Unit

## What recommendations are included in the jail needs assessment?



Increased inmate programs with new jail construction

The needs assessment concludes that San Mateo County should add 776 new jail beds to its inventory immediately. The Sheriff, in concert with the County Manager and the Board of Supervisors, recently applied for funding to build a 648 bed jail in our county. While the funding sources sought were not offered, the Sheriff continues to support the construction of a like size jail to relieve overcrowding and provide for an expected increase in inmate population in the coming years.

## Where will a new replacement jail facility be built?

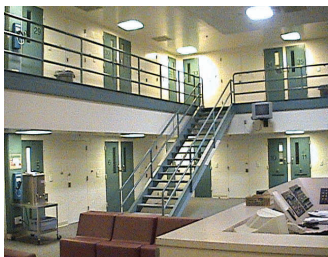
### New Jail Facility

will provide an opportunity for:

- Family re-unification
- Increased inmate programs
- Vocational training

No decision has been made yet regarding the location of the new jail. The needs assessment studied nine different locations, including the current Maple Street Correctional Facilities. Other sites included in the assessment were located in Redwood City, Menlo Park, the City of San Mateo and the unincorporated area on our county. Prior to a site being chosen, the Board of Supervisors and the Sheriff have committed to holding public feedback meetings to allow for an exchange of ideas and opinions.

## What type of replacement jail will be built?

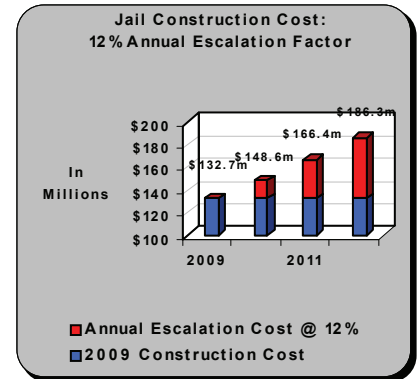


Dorn located inside the Maguire Correctional

The state of California classifies jails in four general categories; Type I, II, III and IV. Type I jails are considered temporary holding facilities designed for detaining inmates for less than 96 hours. Type II jails are described as a jail that houses both pre-trial and sentenced inmates. A Type III jail is designed to house only sentenced inmates and a Type IV jail is one that houses inmates that serve their sentences on some sort of work release arrangement, meaning they often work at their regular jobs during the day and return to jail at night to serve their sentence. The replacement jail here in our county will be a Type II facility.

## How much will a new jail cost and when will it be built?

The needs assessment states that a new 648 bed jail will cost around \$140 million dollars to construct. It also points out that delays have the potential to significantly increase construction costs, possibly as much as a million dollars a month. The Sheriff's Office has staffed a Jail Planning Unit that is working full time towards completing the new jail. It is the Sheriff's goal to have a new jail built and occupied prior to the end of 2012.



Jail construction delays will increase costs

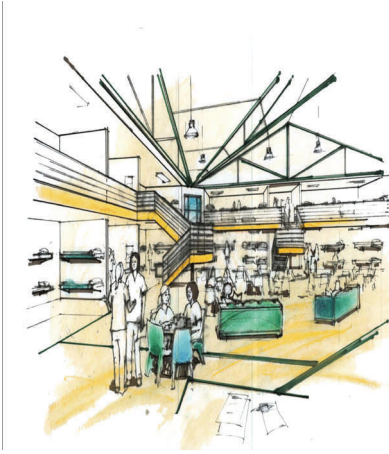
## What problems result from the serious jail overcrowding?

A number of issues arise because of jail overcrowding. The ability of the Sheriff to offer meaningful programming to inmates is severely curtailed by overcrowding. This is especially true for women inmates whose programming opportunities are limited due to the outdated Women's Correctional Center. The Sheriff's vision for the new jail includes comprehensive programming and re-entry modules. Legal liabilities are also a concern when jails become overcrowded. More than half of California counties operate under some type of inmate population cap, returning criminals to the streets of our cities well before it is prudent. Overcrowding also reduces the usable life span of a jail. Increased maintenance issues result from overcrowded jails, increasing costs to taxpayers and effectively shortening the beneficial occupancy of a jail.



Program space converted into jail dorms.

## What are the next steps that will be taken to build a new jail?



As previously stated, a community outreach effort is underway to ensure that the public has a chance to contribute to the building of a new jail. Soon after that, the Board of Supervisors in consultation with the community, the Sheriff and the County Manager will choose a location for the new jail and determine its appropriate size. After that, the County Department of Public Works will release a Request for Proposals to secure the services of an experienced and qualified architect. The new jail will then be designed with input from a wide range of stakeholders and construction will begin.

## Who do I contact if I have questions about the new jail?

Sheriff's Lieutenant Deborah Bazan heads up the Jail Planning unit and can be reached at 650-508-6721. Lieutenant Bazan can help answer your questions and can even arrange for a speaker from the Sheriff's Office to make presentations to your neighborhood group or service club.

Bob Livengood, Jail Planning 650-508-6722  
Mike Mitchell, Jail Planning 650-508-6723



[www.co.sanmateo.ca.us/  
smc/departments/home](http://www.co.sanmateo.ca.us/smc/departments/home)

**HOT TOPIC: JAIL PLANNING**